

For Research Use Only

# RPP30 Recombinant antibody, PBS Only (Capture/Detector)

Catalog Number:83481-2-PBS



## Basic Information

<b>Catalog Number:</b> 83481-2-PBS	<b>GenBank Accession Number:</b> BC006991	<b>Purification Method:</b> Protein A purification
<b>Size:</b> 100ug , Concentration: 1 mg/ml by Nanodrop;	<b>GeneID (NCBI):</b> 10556	<b>CloneNo.:</b> 240468F5
<b>Source:</b> Rabbit	<b>UNIPROT ID:</b> P78346	
<b>Isotype:</b> IgG	<b>Full Name:</b> ribonuclease P/MRP 30kDa subunit	
<b>Immunogen Catalog Number:</b> AG8600	<b>Calculated MW:</b> 268 aa, 29 kDa	

## Applications

**Tested Applications:**  
Cytometric bead array, Sandwich ELISA, Indirect ELISA,  
Sample test

**Species Specificity:**  
human

## Product Information

83481-2-PBS targets RPP30 as part of a matched antibody pair:

MP00472-1: 83481-2-PBS capture and 83481-5-PBS detection (validated in Cytometric bead array, Sandwich ELISA)

MP00472-2: 83481-4-PBS capture and 83481-2-PBS detection (validated in Cytometric bead array)

Unconjugated rabbit recombinant monoclonal antibody in PBS only (BSA and azide free) storage buffer at a concentration of 1 mg/mL, ready for conjugation. Created using Proteintech's proprietary in-house recombinant technology. Recombinant production enables unrivalled batch-to-batch consistency, easy scale-up, and future security of supply.

This conjugation ready format makes antibodies ideal for use in many applications including: ELISAs, multiplex assays requiring matched pairs, mass cytometry, and multiplex imaging applications. Antibody use should be optimized by the end user for each application and assay.

## Storage

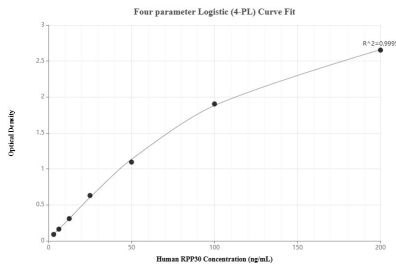
**Storage:**  
Store at -80°C.

**Storage Buffer:**  
PBS Only

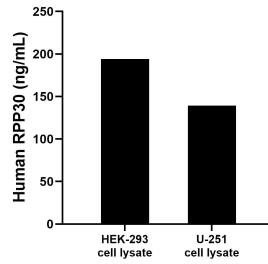
For technical support and original validation data for this product please contact:  
T: 1 (888) 4PTGLAB (1-888-478-4522) (toll free in USA), or 1(312) 455-8498 (outside USA)      E: proteintech@ptglab.com  
W: ptglab.com

**This product is exclusively available under Proteintech Group brand and is not available to purchase from any other manufacturer.**

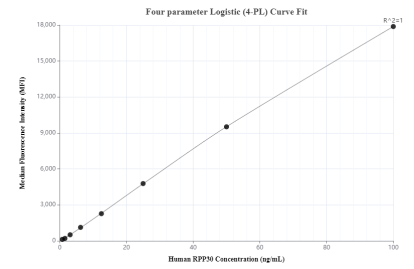
## Selected Validation Data



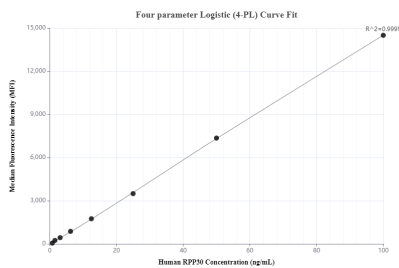
Sandwich ELISA standard curve of MP00472-1, Human RPP30 Recombinant Matched Antibody Pair - PBS only. 83481-2-PBS was coated to a plate as the capture antibody and incubated with serial dilutions of standard Ag8600. 83481-5-PBS was HRP conjugated as the detection antibody. Range: 3.13-200 ng/mL



HEK-293 and U-251 cell lysate were measured. The human RPP30 concentration of detected samples was determined to be 194.20 ng/mL (based on a 1.2 mg/mL extract load) in HEK-293 cell lysate and 139.41 ng/mL (based on a 3.3 mg/mL extract load) in U-251 cell lysate.



Cytometric bead array standard curve of MP00472-1, RPP30 Recombinant Matched Antibody Pair, PBS Only. Capture antibody: 83481-2-PBS. Detection antibody: 83481-5-PBS. Standard: Ag8600. Range: 0.78-100 ng/mL



Cytometric bead array standard curve of MP00472-2, RPP30 Recombinant Matched Antibody Pair, PBS Only. Capture antibody: 83481-4-PBS. Detection antibody: 83481-2-PBS. Standard: Ag8600. Range: 0.78-100 ng/mL