

For Research Use Only

# MAGEA3 Recombinant antibody, PBS Only (Capture/Detector)

Catalog Number: 83480-3-PBS



## Basic Information

<b>Catalog Number:</b> 83480-3-PBS	<b>GenBank Accession Number:</b> BC000340	<b>Purification Method:</b> Protein A purification
<b>Size:</b> 100ug , Concentration: 1 mg/ml by Nanodrop;	<b>GeneID (NCBI):</b> 4102	<b>CloneNo.:</b> 240435F8
<b>Source:</b> Rabbit	<b>UNIPROT ID:</b> P43357	
<b>Isotype:</b> IgG	<b>Full Name:</b> melanoma antigen family A, 3	
<b>Immunogen Catalog Number:</b> AG0265	<b>Calculated MW:</b> 314 aa, 35 kDa	

## Applications

**Tested Applications:**  
Cytometric bead array, Sandwich ELISA, Indirect ELISA, Sample test

**Species Specificity:**  
human

## Product Information

83480-3-PBS targets MAGEA3 as part of a matched antibody pair:

MP00467-1: 83480-3-PBS capture and 83480-2-PBS detection (validated in Cytometric bead array)

MP00467-2: 83480-3-PBS capture and 83480-4-PBS detection (validated in Cytometric bead array)

MP00467-4: 83480-6-PBS capture and 83480-3-PBS detection (validated in Sandwich ELISA)

Unconjugated rabbit recombinant monoclonal antibody in PBS only (BSA and azide free) storage buffer at a concentration of 1 mg/mL, ready for conjugation. Created using Proteintech's proprietary in-house recombinant technology. Recombinant production enables unrivalled batch-to-batch consistency, easy scale-up, and future security of supply.

This conjugation ready format makes antibodies ideal for use in many applications including: ELISAs, multiplex assays requiring matched pairs, mass cytometry, and multiplex imaging applications. Antibody use should be optimized by the end user for each application and assay.

## Storage

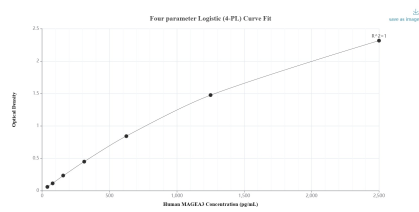
**Storage:**  
Store at -80°C.

**Storage Buffer:**  
PBS Only

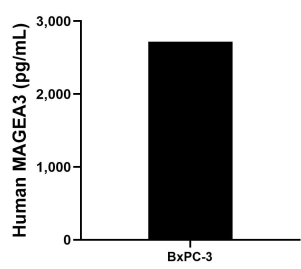
For technical support and original validation data for this product please contact:  
T: 1 (888) 4PTGLAB (1-888-478-4522) (toll free in USA), or 1(312) 455-8498 (outside USA)  
E: proteintech@ptglab.com  
W: ptglab.com

This product is exclusively available under Proteintech Group brand and is not available to purchase from any other manufacturer.

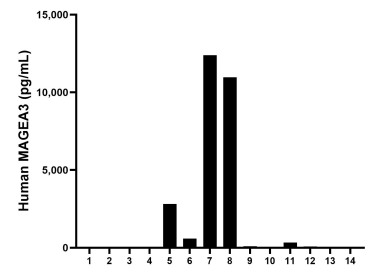
Selected Validation Data



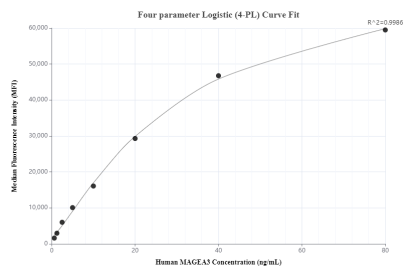
Sandwich ELISA standard curve of MP00467-4, Human MAGEA3 Recombinant Matched Antibody Pair - PBS only. 83480-6-PBS was coated to a plate as the capture antibody and incubated with serial dilutions of standard Ag0265. 83480-3-PBS was HRP conjugated as the detection antibody. Range: 39.1-2500 pg/mL.



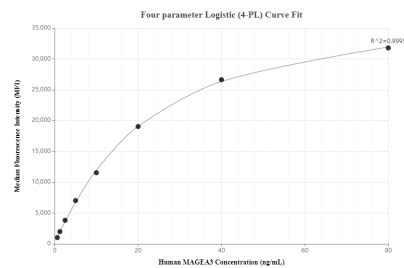
The mean MAGEA3 concentration was determined to be 2,719.3 pg/mL in BxPC-3 cell extract based on a 5.4 mg/mL extract load.



Serum of fourteen individual healthy human donors was measured. The MAGEA3 concentration of detected samples was determined to be 1,950.7 pg/mL with a range of ND - 12,398.4 pg/mL.



Cytometric bead array standard curve of MP00467-1, MAGEA3 Recombinant Matched Antibody Pair, PBS Only. Capture antibody: 83480-3-PBS. Detection antibody: 83480-2-PBS. Standard: Ag0265. Range: 0.625-80 ng/mL.



Cytometric bead array standard curve of MP00467-2, MAGEA3 Recombinant Matched Antibody Pair, PBS Only. Capture antibody: 83480-3-PBS. Detection antibody: 83480-4-PBS. Standard: Ag0265. Range: 0.625-80 ng/mL.