

For Research Use Only

# FAM116A Recombinant antibody, PBS Only (Detector)



Catalog Number: 83473-3-PBS

## Basic Information

<b>Catalog Number:</b> 83473-3-PBS	<b>GenBank Accession Number:</b> BC040291	<b>Purification Method:</b> Protein A purification
<b>Size:</b> 100ug , Concentration: 1 mg/ml by Nanodrop;	<b>GeneID (NCBI):</b> 201627	<b>CloneNo.:</b> 240486B9
<b>Source:</b> Rabbit	<b>UNIPROT ID:</b> Q8IWF6	
<b>Isotype:</b> IgG	<b>Full Name:</b> family with sequence similarity 116, member A	
<b>Immunogen Catalog Number:</b> AG22052	<b>Calculated MW:</b> 608 aa, 70 kDa	

## Applications

**Tested Applications:**  
WB, Cytometric bead array, Indirect ELISA

**Species Specificity:**  
human

## Product Information

83473-3-PBS targets FAM116A as part of a matched antibody pair:

MP00477-1: 83473-1-PBS capture and 83473-3-PBS detection (validated in Cytometric bead array)

Unconjugated rabbit recombinant monoclonal antibody in PBS only (BSA and azide free) storage buffer at a concentration of 1 mg/mL, ready for conjugation. Created using Proteintech's proprietary in-house recombinant technology. Recombinant production enables unrivalled batch-to-batch consistency, easy scale-up, and future security of supply.

This conjugation ready format makes antibodies ideal for use in many applications including: ELISAs, multiplex assays requiring matched pairs, mass cytometry, and multiplex imaging applications. Antibody use should be optimized by the end user for each application and assay.

## Storage

**Storage:**  
Store at -80°C.

**Storage Buffer:**  
PBS Only

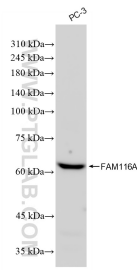
For technical support and original validation data for this product please contact:

T: 1 (888) 4PTGLAB (1-888-478-4522) (toll free  
in USA), or 1(312) 455-8498 (outside USA)

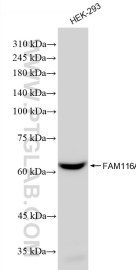
E: [proteintech@ptglab.com](mailto:proteintech@ptglab.com)  
W: [ptglab.com](http://ptglab.com)

**This product is exclusively available under Proteintech Group brand and is not available to purchase from any other manufacturer.**

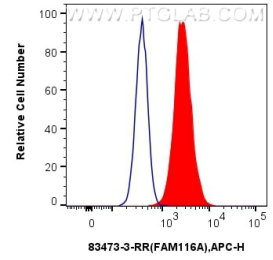
## Selected Validation Data



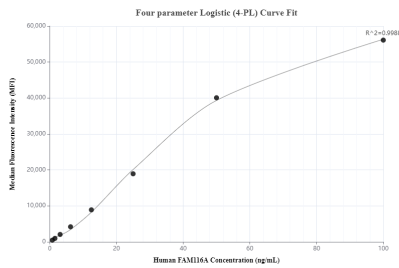
PC-3 cells were subjected to SDS PAGE followed by western blot with 83473-3-RR (FAM116A antibody) at dilution of 1:5000 incubated at room temperature for 1.5 hours. This data was developed using the same antibody clone with 83473-3-PBS in a different storage buffer formulation.



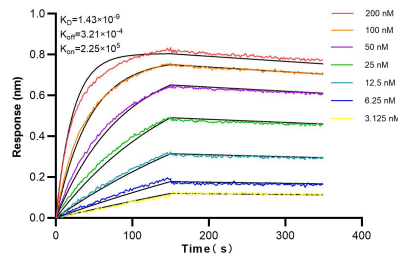
HEK-293 cells were subjected to SDS PAGE followed by western blot with 83473-3-RR (FAM116A antibody) at dilution of 1:5000 incubated at room temperature for 1.5 hours. This data was developed using the same antibody clone with 83473-3-PBS in a different storage buffer formulation.



$1 \times 10^6$  HepG2 cells were intracellularly stained with 0.25  $\mu$ g FAM116A Recombinant antibody (83473-3-RR, Clone:240486B9) and APC-Conjugated AffiniPure Goat Anti-Rabbit IgG(H+L) (red), or 0.25  $\mu$ g Isotype Control (blue). Cells were fixed with 4% PFA and permeabilized with Flow Cytometry Perm Buffer (PF00011-C). This data was developed using the same antibody clone with 83473-3-PBS in a different storage buffer formulation.



Cytometric bead array standard curve of MP00477-1, FAM116A Recombinant Matched Antibody Pair, PBS Only. Capture antibody: 83473-1-PBS. Detection antibody: 83473-3-PBS. Standard: Ag22052. Range: 0.78-100 ng/mL.



Biolayer interferometry (BLI) kinetic assays of 83473-3-RR against Human FAM116A were performed. The affinity constant is 1.43 nM.