

For Research Use Only

# ELAC2 Recombinant antibody

Catalog Number:83468-6-RR



## Basic Information

<b>Catalog Number:</b> 83468-6-RR	<b>GenBank Accession Number:</b> BC004158	<b>Purification Method:</b> Protein A purification
<b>Size:</b> 100ul , Concentration: 1000 ug/ml by Nanodrop;	<b>GeneID (NCBI):</b> 60528	<b>CloneNo.:</b> 240487B6
<b>Source:</b> Rabbit	<b>UNIPROT ID:</b> Q9BQ52	<b>Recommended Dilutions:</b> WB 1:5000-1:50000
<b>Isotype:</b> IgG	<b>Full Name:</b> elaC homolog 2 (E. coli)	
<b>Immunogen Catalog Number:</b> AG0105	<b>Calculated MW:</b> 92 kDa	
	<b>Observed MW:</b> 97 kDa	

## Applications

<b>Tested Applications:</b> WB, FC (Intra), ELISA	<b>Positive Controls:</b> WB : HEK-293 cells, HeLa cells, MCF-7 cells, Raji cells, DU 145 cells
<b>Species Specificity:</b> human	

## Background Information

Putative prostate cancer susceptibility protein (ELAC2) is encoded by HPC2/ELAC2 gene. HPC2 is a potential prostate cancer predisposition gene playing a role in genetic susceptibility to prostate cancer. It is a zinc phosphodiesterase, which displays some tRNA 3'-processing endonuclease activity and probably involved in tRNA maturation, by removing a 3'-trailer from precursor tRNA. Defects in ELAC2 may be a cause of susceptibility to prostate cancer (PC).

## Storage

**Storage:**  
Store at -20°C. Stable for one year after shipment.  
**Storage Buffer:**  
PBS with 0.02% sodium azide and 50% glycerol pH 7.3.  
Aliquoting is unnecessary for -20°C storage

\*\*\* 20ul sizes contain 0.1% BSA

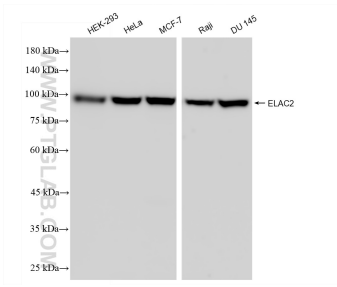
For technical support and original validation data for this product please contact:

T: 1 (888) 4PTGLAB (1-888-478-4522) (toll free in USA), or 1(312) 455-8498 (outside USA)

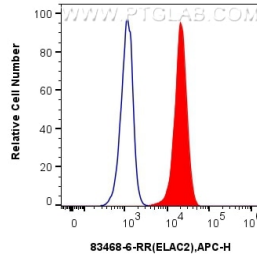
E: [proteintech@ptglab.com](mailto:proteintech@ptglab.com)  
W: [ptglab.com](http://ptglab.com)

This product is exclusively available under Proteintech Group brand and is not available to purchase from any other manufacturer.

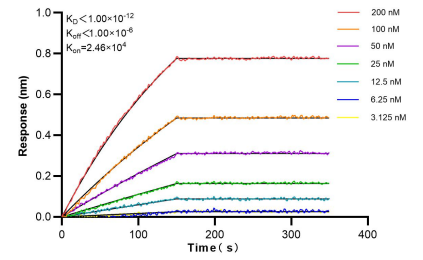
## Selected Validation Data



Various lysates were subjected to SDS PAGE followed by western blot with 83468-6-RR (ELAC2 antibody) at dilution of 1:10000 incubated at room temperature for 1.5 hours.



1x10<sup>6</sup> A431 cells were intracellularly stained with 0.25 ug ELAC2 Recombinant antibody (83468-6-RR, Clone:240487B6) and APC-Conjugated Goat Anti-Rabbit IgG(H+L)(red), or 0.25 ug Isotype Control (blue). Cells were fixed and permeabilized with Transcription Factor Staining Buffer Kit (PF00011).



Biacore BLI kinetic assays of 83468-6-RR against Human ELAC2 were performed. The affinity constant is below 1 pM.