

For Research Use Only

TFF1 Recombinant antibody, PBS Only (Detector)



Catalog Number: 83467-3-PBS

Basic Information

Catalog Number: 83467-3-PBS	GenBank Accession Number: BC032811	Purification Method: Protein A purification
Size: 100ug , Concentration: 1 mg/ml by Nanodrop;	GeneID (NCBI): 7031	CloneNo.: 240424H4
Source: Rabbit	UNIPROT ID: P04155	
Isotype: IgG	Full Name: trefoil factor 1	
Immunogen Catalog Number: AG4541	Calculated MW: 84 aa, 9 kDa	

Applications

Tested Applications:
Sandwich ELISA, Indirect ELISA, Sample test

Species Specificity:
human

Product Information

83467-3-PBS targets TFF1 as part of a matched antibody pair:

MP00469-2: 83467-1-PBS capture and 83467-3-PBS detection (validated in Sandwich ELISA)

Unconjugated rabbit recombinant monoclonal antibody in PBS only (BSA and azide free) storage buffer at a concentration of 1 mg/mL, ready for conjugation. Created using Proteintech's proprietary in-house recombinant technology. Recombinant production enables unrivalled batch-to-batch consistency, easy scale-up, and future security of supply.

This conjugation ready format makes antibodies ideal for use in many applications including: ELISAs, multiplex assays requiring matched pairs, mass cytometry, and multiplex imaging applications. Antibody use should be optimized by the end user for each application and assay.

Storage

Storage:
Store at -80°C.

Storage Buffer:
PBS Only

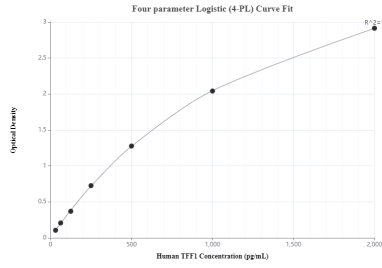
For technical support and original validation data for this product please contact:

T: 1 (888) 4PTGLAB (1-888-478-4522) (toll free in USA), or 1(312) 455-8498 (outside USA)

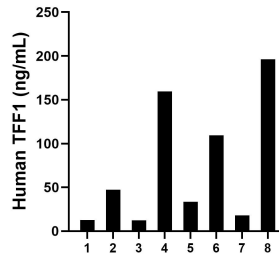
E: proteintech@ptglab.com
W: ptglab.com

This product is exclusively available under Proteintech Group brand and is not available to purchase from any other manufacturer.

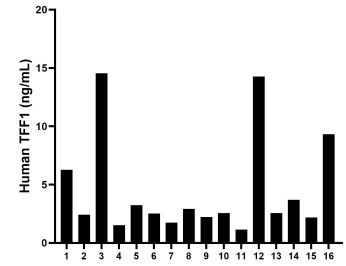
Selected Validation Data



Sandwich ELISA standard curve of MP00469-2, TFF1 Recombinant Matched Antibody Pair - PBS only. 83467-1-PBS was coated to a plate as the capture antibody and incubated with serial dilutions of standard Ag4541. 83467-3-PBS was HRP conjugated as the detection antibody. Range: 31.25-2000 pg/mL



Urine of eight individual healthy human donors was measured. The TFF1 concentration of detected samples was determined to be 73.7 ng/mL with a range of 12.4 - 196.2 ng/mL.



Serum of sixteen individual healthy human donors was measured. The TFF1 concentration of detected samples was determined to be 4.6 ng/mL with a range of 1.1 - 14.6 ng/mL.