

For Research Use Only

# TFF1 Recombinant antibody, PBS Only (Capture/Detector)



Catalog Number: 83467-1-PBS

## Basic Information

<b>Catalog Number:</b> 83467-1-PBS	<b>GenBank Accession Number:</b> BC032811	<b>Purification Method:</b> Protein A purification
<b>Size:</b> 100ug, Concentration: 1 mg/ml by Nanodrop;	<b>GeneID (NCBI):</b> 7031	<b>CloneNo.:</b> 240424E6
<b>Source:</b> Rabbit	<b>UNIPROT ID:</b> P04155	
<b>Isotype:</b> IgG	<b>Full Name:</b> trefoil factor 1	
<b>Immunogen Catalog Number:</b> AG4541	<b>Calculated MW:</b> 84 aa, 9 kDa	

## Applications

**Tested Applications:**  
Cytometric bead array, Sandwich ELISA, Indirect ELISA, Sample test

**Species Specificity:**  
human

## Product Information

83467-1-PBS targets TFF1 as part of a matched antibody pair:

MP00469-1: 83467-2-PBS capture and 83467-1-PBS detection (validated in Cytometric bead array)

MP00469-2: 83467-1-PBS capture and 83467-3-PBS detection (validated in Sandwich ELISA)

Unconjugated rabbit recombinant monoclonal antibody in PBS only (BSA and azide free) storage buffer at a concentration of 1 mg/mL, ready for conjugation. Created using Proteintech's proprietary in-house recombinant technology. Recombinant production enables unrivalled batch-to-batch consistency, easy scale-up, and future security of supply.

This conjugation ready format makes antibodies ideal for use in many applications including: ELISAs, multiplex assays requiring matched pairs, mass cytometry, and multiplex imaging applications. Antibody use should be optimized by the end user for each application and assay.

## Storage

**Storage:**  
Store at -80°C.  
**Storage Buffer:**  
PBS Only

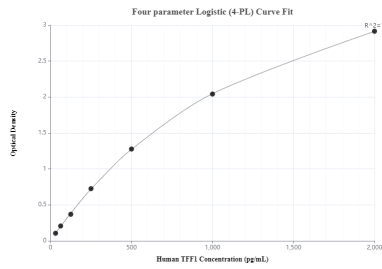
For technical support and original validation data for this product please contact:

T: 1 (888) 4PTGLAB (1-888-478-4522) (toll free in USA), or 1(312) 455-8498 (outside USA)

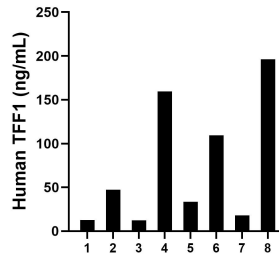
E: [proteintech@ptglab.com](mailto:proteintech@ptglab.com)  
W: [ptglab.com](http://ptglab.com)

**This product is exclusively available under Proteintech Group brand and is not available to purchase from any other manufacturer.**

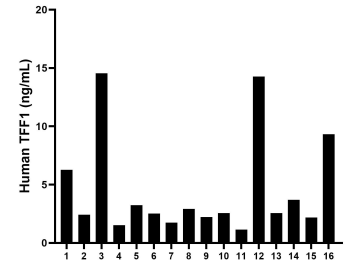
## Selected Validation Data



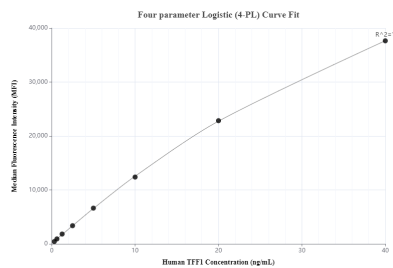
Sandwich ELISA standard curve of MP00469-2, TFF1 Recombinant Matched Antibody Pair - PBS only. 83467-1-PBS was coated to a plate as the capture antibody and incubated with serial dilutions of standard Ag4541. 83467-3-PBS was HRP conjugated as the detection antibody. Range: 31.25-2000 pg/mL



Urine of eight individual healthy human donors was measured. The TFF1 concentration of detected samples was determined to be 73.7 ng/mL with a range of 12.4 - 196.2 ng/mL.



Serum of sixteen individual healthy human donors was measured. The TFF1 concentration of detected samples was determined to be 4.6 ng/mL with a range of 1.1 - 14.6 ng/mL.



Cytometric bead array standard curve of MP00469-1, TFF1 Recombinant Matched Antibody Pair, PBS Only. Capture antibody: 83467-2-PBS. Detection antibody: 83467-1-PBS. Standard: Ag4541. Range: 0.313-40 ng/mL