

For Research Use Only

IFITM2 Recombinant antibody, PBS Only

Catalog Number: 83455-5-PBS



Basic Information

Catalog Number: 83455-5-PBS	GenBank Accession Number: BC009696	Purification Method: Protein A purification
Size: 100ug, Concentration: 1 mg/ml by Nanodrop;	GeneID (NCBI): 10581	CloneNo.: 240318B6
Source: Rabbit	UNIPROT ID: Q01629	
Isotype: IgG	Full Name: interferon induced transmembrane protein 2 (1-8D)	
Immunogen Catalog Number: AG3451	Calculated MW: 132 aa, 15 kDa	
	Observed MW: 15 kDa	

Applications

Tested Applications:
WB, IF/ICC, FC (Intra), ELISA

Species Specificity:
human

Background Information

IFITM2, also named as 1-8D, belongs to the CD225 family. It is an IFN-induced antiviral protein that mediates cellular innate immunity to at least three major human pathogens, namely influenza A H1N1 virus, West Nile virus (WNV), and dengue virus, by inhibiting the early steps of replication. IFITM2 induces cell cycle arrest and mediates apoptosis by caspase activation and in a p53-independent manner. It is overexpressed in colon carcinoma. IFITM2 is a novel pro-apoptotic gene that will provide new insights into the regulated cellular pathways to death. IFITM proteins are recently identified as viral restriction factors that inhibit infection mediated by the influenza A virus (IAV) hemagglutinin (HA) protein. Also, they serve as important components of the innate immune system to restrict HIV-1 infection.

Storage

Storage:
Store at -80°C.

Storage Buffer:
PBS Only

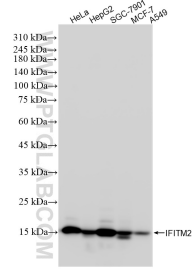
For technical support and original validation data for this product please contact:

T: 1 (888) 4PTGLAB (1-888-478-4522) (toll free in USA), or 1(312) 455-8498 (outside USA)

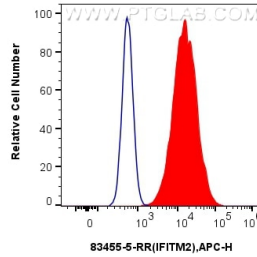
E: proteintech@ptglab.com
W: ptglab.com

This product is exclusively available under Proteintech Group brand and is not available to purchase from any other manufacturer.

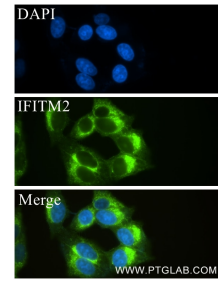
Selected Validation Data



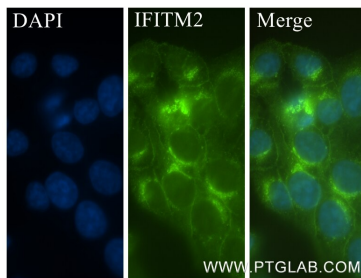
Various lysates were subjected to SDS PAGE followed by western blot with 83455-5-RR (IFITM2 antibody) at dilution of 1:20000 incubated at room temperature for 1.5 hours. This data was developed using the same antibody clone with 83455-5-PBS in a different storage buffer formulation.



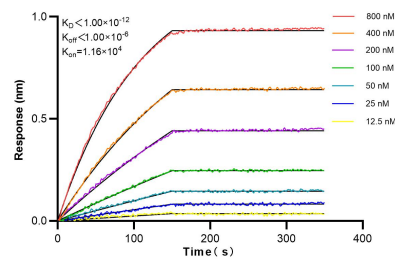
1×10^6 MCF-7 cells were intracellularly stained with 0.25 μ g IFITM2 Recombinant antibody (83455-5-RR, Clone:240318B6) and APC-Conjugated AffiniPure Goat Anti-Rabbit IgG(H+L)(red), or 0.25 μ g Isotype Control (blue). Cells were fixed with 4% PFA and permeabilized with Flow Cytometry Perm Buffer (PF00011-C). This data was developed using the same antibody clone with 83455-5-PBS in a different storage buffer formulation.



Immunofluorescent analysis of (-20°C Methanol) fixed HepG2 cells using IFITM2 antibody (83455-5-RR, Clone: 240318B6) at dilution of 1:400 and CoraLite®488-Conjugated Goat Anti-Rabbit IgG(H+L) (SA00013-2). This data was developed using the same antibody clone with 83455-5-PBS in a different storage buffer formulation.



Immunofluorescent analysis of (-20°C Ethanol) fixed HepG2 cells using IFITM2 antibody (83455-5-RR, Clone: 240318B6) at dilution of 1:400 and CoraLite®488-Conjugated Goat Anti-Rabbit IgG(H+L) (SA00013-2). This data was developed using the same antibody clone with 83455-5-PBS in a different storage buffer formulation.



Biolayer interferometry (BLI) kinetic assays of 83455-5-RR against Human IFITM2 were performed. The affinity constant is below 1 pM.