

For Research Use Only

# PLXDC2 Recombinant antibody

Catalog Number: 83449-4-RR



## Basic Information

<b>Catalog Number:</b> 83449-4-RR	<b>GenBank Accession Number:</b> BC012885	<b>Purification Method:</b> Protein A purification
<b>Size:</b> 100ul , Concentration: 1000 ug/ml by Nanodrop;	<b>GeneID (NCBI):</b> 84898	<b>CloneNo.:</b> 240174A11
<b>Source:</b> Rabbit	<b>UNIPROT ID:</b> Q6UX71	<b>Recommended Dilutions:</b> WB 1:5000-1:50000 IHC 1:400-1:1600
<b>Isotype:</b> IgG	<b>Full Name:</b> plexin domain containing 2	
<b>Immunogen Catalog Number:</b> AG2940	<b>Calculated MW:</b> 480 aa, 54 kDa	
	<b>Observed MW:</b> 54 kDa	

## Applications

**Tested Applications:**  
WB, IHC, ELISA

**Species Specificity:**  
human

**Note-IHC: suggested antigen retrieval with TE buffer pH 9.0; (\*) Alternatively, antigen retrieval may be performed with citrate buffer pH 6.0**

**Positive Controls:**

WB : MKN-45 cells,

IHC : human intrahepatic cholangiocarcinoma tissue,

## Background Information

PLXDC2 (Plexin-domain containing 2), also named tumor endothelial marker 7-related protein (TEM7R), is a single-pass type I membrane protein with some homology to nidogen and to plexins. PLXDC2 is located in tumor endothelium and plays a role in tumor angiogenesis. Three isoforms of PLXDC2 produced by alternative splicing have been described. Recent finding revealed that PLXDC2 is a mitogen for neural progenitors and functions as a novel regulator of the development of different brain regions, suggesting its role in coordinating proliferation and differentiation in the developing nervous system.

## Storage

**Storage:**

Store at -20°C. Stable for one year after shipment.

**Storage Buffer:**

PBS with 0.02% sodium azide and 50% glycerol pH 7.3.

Aliquoting is unnecessary for -20°C storage

**\*\*\* 20ul sizes contain 0.1% BSA**

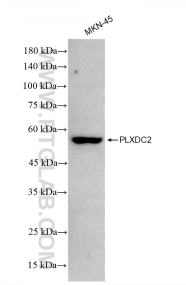
For technical support and original validation data for this product please contact:

T: 1 (888) 4PTGLAB (1-888-478-4522) (toll free in USA), or 1(312) 455-8498 (outside USA)

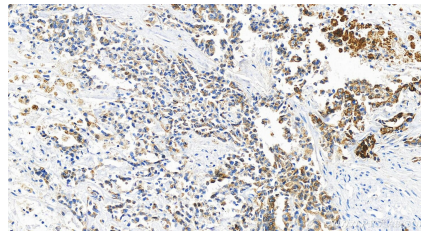
E: proteintech@ptglab.com  
W: ptglab.com

**This product is exclusively available under Proteintech Group brand and is not available to purchase from any other manufacturer.**

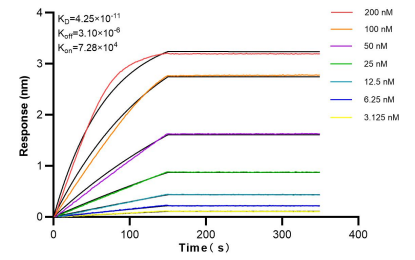
## Selected Validation Data



MKN-45 cells were subjected to SDS PAGE followed by western blot with 83449-4-RR (PLXDC2 antibody) at dilution of 1:20000 incubated at room temperature for 1.5 hours.



Immunohistochemical analysis of paraffin-embedded human intrahepatic cholangiocarcinoma tissue slide using 83449-4-RR (PLXDC2 antibody) at dilution of 1:800 (under 20x lens). Heat mediated antigen retrieval with Tris-EDTA buffer (pH 9.0).



Bi-layer interferometry (BLI) kinetic assays of 83449-4-RR against Human PLXDC2 were performed. The affinity constant is 42.5 pM.