

For Research Use Only

ESR2 Recombinant antibody, PBS Only (Capture/Detector)

Catalog Number: 83447-2-PBS



Basic Information

Catalog Number: 83447-2-PBS	GenBank Accession Number: BC024181	Purification Method: Protein A purification
Size: 100ug, Concentration: 1 mg/ml by Nanodrop;	GeneID (NCBI): 2100	CloneNo.: 240412G9
Source: Rabbit	UNIPROT ID: Q92731	
Isotype: IgG	Full Name: estrogen receptor 2 (ER beta)	
Immunogen Catalog Number: AG5103	Calculated MW: 59 kDa	

Applications

Tested Applications:
Cytometric bead array, Sandwich ELISA, Indirect ELISA,
Sample test

Species Specificity:
human

Product Information

83447-2-PBS targets ESR2 as part of a matched antibody pair:

MP00441-1: 83447-2-PBS capture and 83447-3-PBS detection (validated in Cytometric bead array)

MP00441-3: 83447-4-PBS capture and 83447-2-PBS detection (validated in Sandwich ELISA)

Unconjugated rabbit recombinant monoclonal antibody in PBS only (BSA and azide free) storage buffer at a concentration of 1 mg/mL, ready for conjugation. Created using Proteintech's proprietary in-house recombinant technology. Recombinant production enables unrivalled batch-to-batch consistency, easy scale-up, and future security of supply.

This conjugation ready format makes antibodies ideal for use in many applications including: ELISAs, multiplex assays requiring matched pairs, mass cytometry, and multiplex imaging applications. Antibody use should be optimized by the end user for each application and assay.

Storage

Storage:
Store at -80°C.
Storage Buffer:
PBS Only

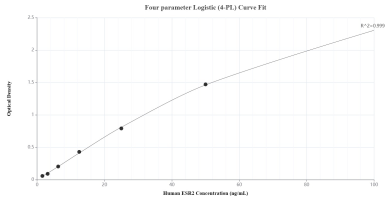
For technical support and original validation data for this product please contact:

T: 1 (888) 4PTGLAB (1-888-478-4522) (toll free
in USA), or 1(312) 455-8498 (outside USA)

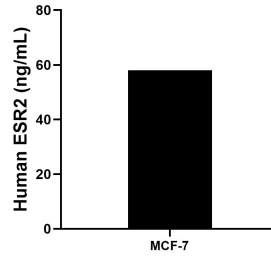
E: proteintech@ptglab.com
W: ptglab.com

This product is exclusively available under Proteintech Group brand and is not available to purchase from any other manufacturer.

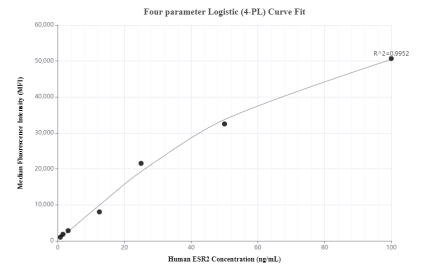
Selected Validation Data



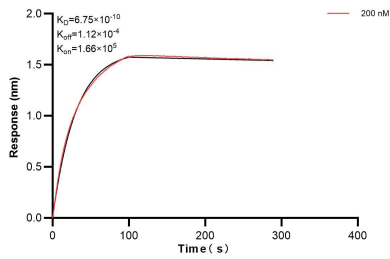
Sandwich ELISA standard curve of MP00441-3, Human ESR2 Recombinant Matched Antibody Pair - PBS only. 83447-4-PBS was coated to a plate as the capture antibody and incubated with serial dilutions of standard Ag5103. 83447-2-PBS was HRP conjugated as the detection antibody. Range: 1.56-100 ng/mL



The mean ESR2 concentration was determined to be 58.05 ng/mL in MCF-7 cell extract based on a 4.30 mg/mL extract load.



Cytometric bead array standard curve of MP00441-1, ESR2 Recombinant Matched Antibody Pair, PBS Only. Capture antibody: 83447-2-PBS. Detection antibody: 83447-3-PBS. Standard: Ag5103. Range: 0.781-100 ng/mL



Bi-layer interferometry (BLI) kinetic assay of 83447-2-PBS against Human ESR2 was performed. The affinity constant is 0.675 nM.