

For Research Use Only

SLC2A10 Recombinant antibody

Catalog Number:83441-3-RR



Basic Information

Catalog Number: 83441-3-RR	GenBank Accession Number: BC101657	Purification Method: Protein A purification
Size: 100ul , Concentration: 1000 ug/ml by Nanodrop;	GeneID (NCBI): 81031	CloneNo.: 240335E12
Source: Rabbit	UNIPROT ID: O95528	Recommended Dilutions: WB 1:5000-1:50000
Isotype: IgG	Full Name: solute carrier family 2 (facilitated glucose transporter), member 10	
Immunogen Catalog Number: AG14210	Calculated MW: 541 aa, 57 kDa	
	Observed MW: 66 kDa	

Applications

Tested Applications: WB, ELISA	Positive Controls: WB : SW480 cells, Jurkat cells, mouse adipose tissue, mouse liver tissue
Species Specificity: human, mouse	

Background Information

SLC2A10, also known as GLUT10, is a facilitative glucose transporter. It has been shown to be located in mitochondria, the nuclear envelope and the endoplasmic reticulum (ER) (PMID: 32307537). SLC2A10 is involved in the regulation of glucose homeostasis. Arterial Tortuosity Syndrome (ATS) is a rare autosomal recessive connective tissue disorder caused by mutations in the human SLC2A10 gene (PMID: 21553381).

Storage

Storage:
Store at -20°C. Stable for one year after shipment.
Storage Buffer:
PBS with 0.02% sodium azide and 50% glycerol pH 7.3.
Aliquoting is unnecessary for -20°C storage

*** 20ul sizes contain 0.1% BSA

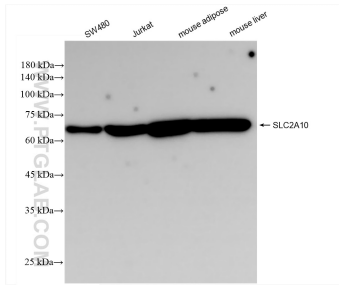
For technical support and original validation data for this product please contact:

T: 1 (888) 4PTGLAB (1-888-478-4522) (toll free in USA), or 1(312) 455-8498 (outside USA)

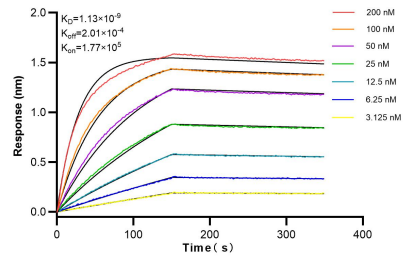
E: proteintech@ptglab.com
W: ptglab.com

This product is exclusively available under Proteintech Group brand and is not available to purchase from any other manufacturer.

Selected Validation Data



Various lysates were subjected to SDS PAGE followed by western blot with 83441-3-RR (SLC2A10 antibody) at dilution of 1:10000 incubated at room temperature for 1.5 hours.



Biolayer interferometry (BLI) kinetic assays of 83441-3-RR against Human SLC2A10 were performed. The affinity constant is 0.43 nM.