

For Research Use Only

TMEM126A Recombinant antibody, PBS Only (Capture)

Catalog Number: 83440-2-PBS



Basic Information

Catalog Number: 83440-2-PBS	GenBank Accession Number: BC007875	Purification Method: Protein A purification
Size: 100ug, Concentration: 1 mg/ml by Nanodrop;	GeneID (NCBI): 84233	CloneNo.: 240425A11
Source: Rabbit	UNIPROT ID: Q9H061	
Isotype: IgG	Full Name: transmembrane protein 126A	
Immunogen Catalog Number: AG14705	Calculated MW: 195 aa, 22 kDa	
	Observed MW: 20-25 kDa	

Applications

Tested Applications:
WB, IF/ICC, Cytometric bead array, Indirect ELISA

Species Specificity:
human

Product Information

83440-2-PBS targets TMEM126A as part of a matched antibody pair:

MP00449-1: 83440-2-PBS capture and 83440-1-PBS detection (validated in Cytometric bead array)

Unconjugated rabbit recombinant monoclonal antibody in PBS only (BSA and azide free) storage buffer at a concentration of 1 mg/mL, ready for conjugation. Created using Proteintech's proprietary in-house recombinant technology. Recombinant production enables unrivalled batch-to-batch consistency, easy scale-up, and future security of supply.

This conjugation ready format makes antibodies ideal for use in many applications including: ELISAs, multiplex assays requiring matched pairs, mass cytometry, and multiplex imaging applications. Antibody use should be optimized by the end user for each application and assay.

Background Information

TMEM126A is a mitochondrial inner membrane protein that is enriched in the cristae. TMEM126A is necessary for Complex I assembly or stability. Complex I (CI) is the largest enzyme of the mitochondrial respiratory chain, and its defects are the main cause of mitochondrial disease.

Storage

Storage:
Store at -80°C.

Storage Buffer:
PBS Only

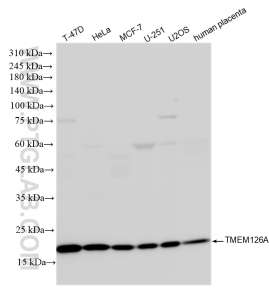
For technical support and original validation data for this product please contact:

T: 1 (888) 4PTGLAB (1-888-478-4522) (toll free in USA), or 1(312) 455-8498 (outside USA)

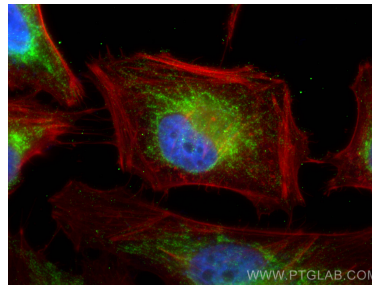
E: proteintech@ptglab.com
W: ptglab.com

This product is exclusively available under Proteintech Group brand and is not available to purchase from any other manufacturer.

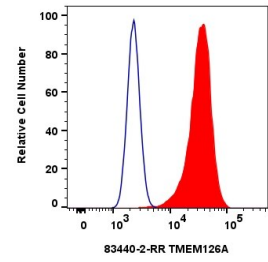
Selected Validation Data



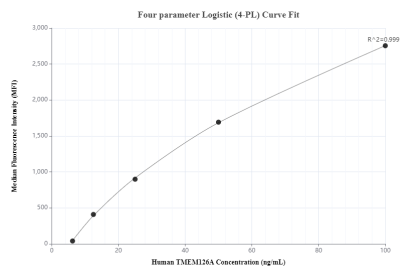
Various lysates were subjected to SDS PAGE followed by western blot with 83440-2-RR (TMEM126A antibody) at dilution of 1:5000 incubated at room temperature for 1.5 hours. This data was developed using the same antibody clone with 83440-2-PBS in a different storage buffer formulation.



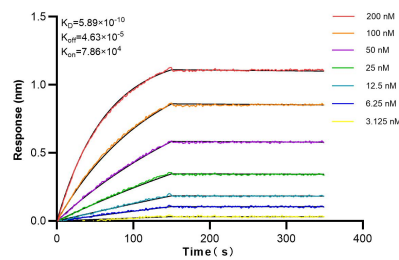
Immunofluorescent analysis of (4% PFA) fixed HeLa cells using TMEM126A antibody (83440-2-RR, Clone: 240425A11) at dilution of 1:1000 and Multi-rAb CoraLite® Plus 488-Goat Anti-Rabbit Recombinant Secondary Antibody (H+L) (RGAR002), CL594-Phalloidin (red). This data was developed using the same antibody clone with 83440-2-PBS in a different storage buffer formulation.



1×10^6 HeLa cells were intracellularly stained with 0.25 μ g TMEM126A Recombinant antibody (83440-2-RR, Clone:240425A11) and CoraLite®488-Conjugated Goat Anti-Rabbit IgG(H+L) (SA00013-2)(red), or 0.25 μ g Rabbit IgG Isotype Control Recombinant Antibody (98136-1-RR, Clone: 240953C9) (blue). Cells were fixed with 4% PFA and permeabilized with Flow Cytometry Perm Buffer (PF00011-C). This data was developed using the same antibody clone with 83440-2-PBS in a



Cytometric bead array standard curve of MP00449-1, TMEM126A Recombinant Matched Antibody Pair, PBS Only. Capture antibody: 83440-2-PBS. Detection antibody: 83440-1-PBS. Standard: Ag14705. Range: 6.25-100 ng/mL



Biolayer interferometry (BLI) kinetic assays of 83440-2-RR against Human TMEM126A were performed. The affinity constant is 0.589 nM.