

For Research Use Only

# POLR2H Recombinant antibody, PBS Only (Detector)



Catalog Number: 83439-1-PBS

## Basic Information

<b>Catalog Number:</b> 83439-1-PBS	<b>GenBank Accession Number:</b> BC000739	<b>Purification Method:</b> Protein A purification
<b>Size:</b> 100ug , Concentration: 1 mg/ml by Nanodrop;	<b>GeneID (NCBI):</b> 5437	<b>CloneNo.:</b> 240410F9
<b>Source:</b> Rabbit	<b>UNIPROT ID:</b> P52434	
<b>Isotype:</b> IgG	<b>Full Name:</b> polymerase (RNA) II (DNA directed) polypeptide H	
<b>Immunogen Catalog Number:</b> AG7166	<b>Calculated MW:</b> 17 kDa	

## Applications

**Tested Applications:**  
WB, Indirect ELISA, Cytometric bead array

**Species Specificity:**  
Human

## Product Information

83439-1-PBS targets POLR2H as part of a matched antibody pair:

MP00447-1: 83439-2-PBS capture and 83439-1-PBS detection (validated in Cytometric bead array)

Unconjugated rabbit recombinant monoclonal antibody in PBS only (BSA and azide free) storage buffer at a concentration of 1 mg/mL, ready for conjugation. Created using Proteintech's proprietary in-house recombinant technology. Recombinant production enables unrivalled batch-to-batch consistency, easy scale-up, and future security of supply.

This conjugation ready format makes antibodies ideal for use in many applications including: ELISAs, multiplex assays requiring matched pairs, mass cytometry, and multiplex imaging applications. Antibody use should be optimized by the end user for each application and assay.

## Storage

**Storage:**  
Store at -80°C.

**Storage Buffer:**  
PBS Only

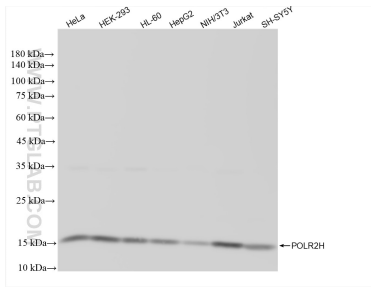
For technical support and original validation data for this product please contact:

T: 1 (888) 4PTGLAB (1-888-478-4522) (toll free in USA), or 1(312) 455-8498 (outside USA)

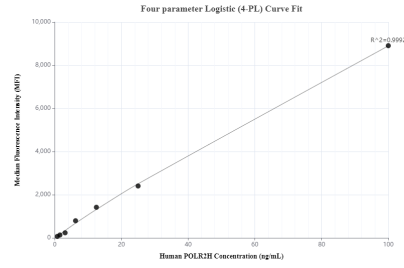
E: [proteintech@ptglab.com](mailto:proteintech@ptglab.com)  
W: [ptglab.com](http://ptglab.com)

**This product is exclusively available under Proteintech Group brand and is not available to purchase from any other manufacturer.**

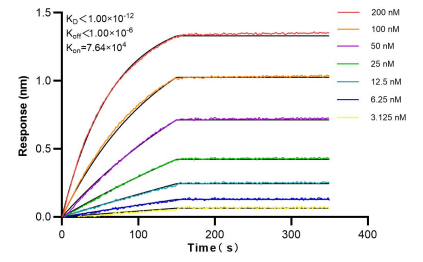
## Selected Validation Data



Various lysates were subjected to SDS PAGE followed by western blot with 83439-1-RR (POLR2H antibody) at dilution of 1:10000 incubated at room temperature for 1.5 hours. This data was developed using the same antibody clone with 83439-1-PBS in a different storage buffer formulation.



Cytometric bead array standard curve of MP00447-1, POLR2H Recombinant Matched Antibody Pair, PBS Only. Capture antibody: 83439-2-PBS. Detection antibody: 83439-1-PBS. Standard: Ag7166. Range: 0.78-100 ng/mL.



Bi-layer interferometry (BLI) kinetic assays of 83439-1-RR against Human POLR2H were performed. The affinity constant is below 1 pM.