

For Research Use Only

TREM2 Recombinant antibody, PBS Only (Detector)

Catalog Number: 83438-7-PBS



Basic Information

Catalog Number: 83438-7-PBS	GenBank Accession Number: BC032362	Purification Method: Protein A purification
Size: 100ug , Concentration: 1 mg/ml by Nanodrop;	GeneID (NCBI): 54209	CloneNo.: 240384F6
Source: Rabbit	UNIPROT ID: Q9NZC2	
Isotype: IgG	Full Name: triggering receptor expressed on myeloid cells 2	
	Calculated MW: 222 aa, 25 kDa	

Applications

Tested Applications:
Sandwich ELISA, Indirect ELISA, Sample test

Species Specificity:
human

Product Information

83438-7-PBS targets TREM2 as part of a matched antibody pair:

MP00440-4: 83438-5-PBS capture and 83438-7-PBS detection (validated in Sandwich ELISA)

Unconjugated rabbit recombinant monoclonal antibody in PBS only (BSA and azide free) storage buffer at a concentration of 1 mg/mL, ready for conjugation. Created using Proteintech's proprietary in-house recombinant technology. Recombinant production enables unrivalled batch-to-batch consistency, easy scale-up, and future security of supply.

This conjugation ready format makes antibodies ideal for use in many applications including: ELISAs, multiplex assays requiring matched pairs, mass cytometry, and multiplex imaging applications. Antibody use should be optimized by the end user for each application and assay.

Storage

Storage:
Store at -80°C.

Storage Buffer:
PBS Only

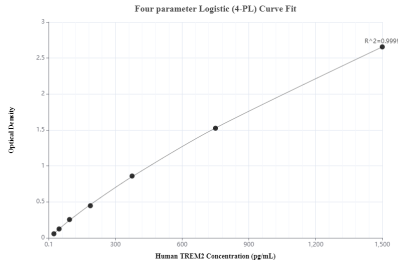
For technical support and original validation data for this product please contact:

T: 1 (888) 4PTGLAB (1-888-478-4522) (toll free
in USA), or 1(312) 455-8498 (outside USA)

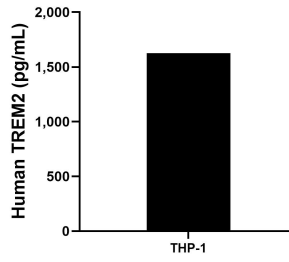
E: proteintech@ptglab.com
W: ptglab.com

This product is exclusively available under Proteintech Group brand and is not available to purchase from any other manufacturer.

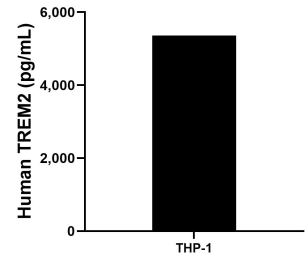
Selected Validation Data



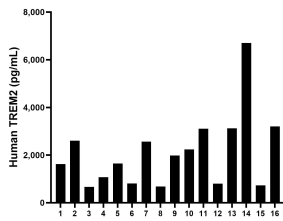
Sandwich ELISA standard curve of MP00440-4, Human TREM2 Monoclonal Matched Antibody Pair - PBS only. 83438-5-PBS was coated to a plate as the capture antibody and incubated with serial dilutions of standard Eg0747. 83438-7-PBS was HRP conjugated as the detection antibody. Range: 23.4-1500 pg/mL



THP-1 cells (3×10^6 cells/mL) were cultured in RPMI with 10% fetal bovine serum, 50 μ M β -mercaptoethanol, 2 mM L-glutamine, 100 U/mL penicillin, and 100 μ g/mL streptomycin sulfate. Aliquots of the cell culture supernatants were removed and assayed for levels of human TREM2 and measured 1,626.6 pg/mL.



The mean human TREM2 concentration was determined to be 5,362.2 pg/mL in THP-1 cell extract based on a 3.0 mg/mL extract load.



Serum of sixteen individual healthy human donors were measured. The human TREM2 concentration of detected samples was determined to be 2,096.2 pg/mL with a range of 661.9-6,705.0 pg/mL.