

For Research Use Only

# TREM2 Recombinant antibody, PBS Only (Capture/Detector)

Catalog Number: 83438-5-PBS



## Basic Information

<b>Catalog Number:</b> 83438-5-PBS	<b>GenBank Accession Number:</b> BC032362	<b>Purification Method:</b> Protein A purification
<b>Size:</b> 100ug, Concentration: 1 mg/ml by Nanodrop;	<b>GeneID (NCBI):</b> 54209	<b>CloneNo.:</b> 240384G3
<b>Source:</b> Rabbit	<b>UNIPROT ID:</b> Q9NZC2	
<b>Isotype:</b> IgG	<b>Full Name:</b> triggering receptor expressed on myeloid cells 2	
	<b>Calculated MW:</b> 222 aa, 25 kDa	

## Applications

**Tested Applications:**  
Cytometric bead array, Sandwich ELISA, Indirect ELISA,  
Sample test

**Species Specificity:**  
human

## Product Information

83438-5-PBS targets TREM2 as part of a matched antibody pair:

MP00440-2: 83438-3-PBS capture and 83438-5-PBS detection (validated in Cytometric bead array)

MP00440-3: 83438-4-PBS capture and 83438-5-PBS detection (validated in Cytometric bead array)

MP00440-4: 83438-5-PBS capture and 83438-7-PBS detection (validated in Sandwich ELISA)

Unconjugated rabbit recombinant monoclonal antibody in PBS only (BSA and azide free) storage buffer at a concentration of 1 mg/mL, ready for conjugation. Created using Proteintech's proprietary in-house recombinant technology. Recombinant production enables unrivalled batch-to-batch consistency, easy scale-up, and future security of supply.

This conjugation ready format makes antibodies ideal for use in many applications including: ELISAs, multiplex assays requiring matched pairs, mass cytometry, and multiplex imaging applications. Antibody use should be optimized by the end user for each application and assay.

## Storage

**Storage:**  
Store at -80°C.

**Storage Buffer:**  
PBS Only

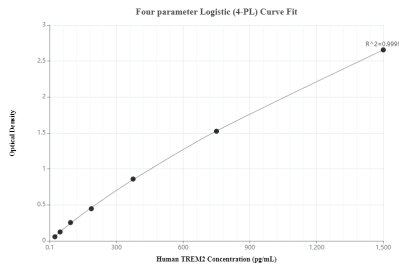
For technical support and original validation data for this product please contact:

T: 1 (888) 4PTGLAB (1-888-478-4522) (toll free  
in USA), or 1(312) 455-8498 (outside USA)

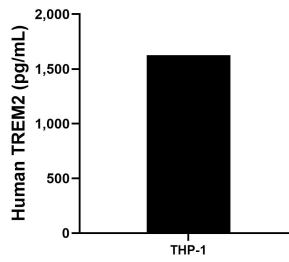
E: [proteintech@ptglab.com](mailto:proteintech@ptglab.com)  
W: [ptglab.com](http://ptglab.com)

**This product is exclusively available under Proteintech Group brand and is not available to purchase from any other manufacturer.**

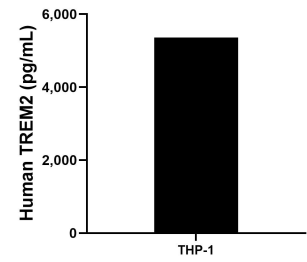
## Selected Validation Data



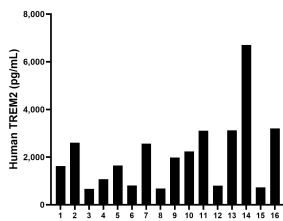
Sandwich ELISA standard curve of MP00440-4, Human TREM2 Monoclonal Matched Antibody Pair - PBS only. 83438-5-PBS was coated to a plate as the capture antibody and incubated with serial dilutions of standard Eg0747. 83438-7-PBS was HRP conjugated as the detection antibody. Range: 23.4-1500 pg/mL



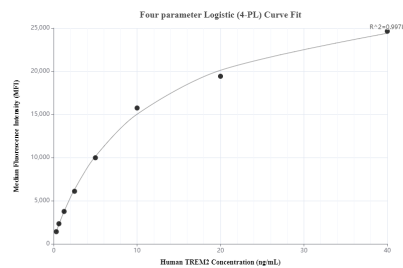
THP-1 cells ( $3 \times 10^6$  cells/mL) were cultured in RPMI with 10% fetal bovine serum, 50  $\mu$ M  $\beta$ -mercaptoethanol, 2 mM L-glutamine, 100 U/mL penicillin, and 100  $\mu$ g/mL streptomycin sulfate. Aliquots of the cell culture supernatants were removed and assayed for levels of human TREM2 and measured 1,626.6 pg/mL.



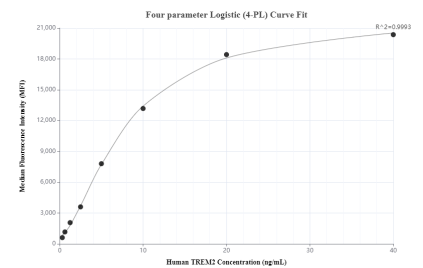
The mean human TREM2 concentration was determined to be 5,362.2 pg/mL in THP-1 cell extract based on a 3.0 mg/mL extract load.



Serum of sixteen individual healthy human donors were measured. The human TREM2 concentration of detected samples was determined to be 2,096.2 pg/mL with a range of 661.9-6,705.0 pg/mL



Cytometric bead array standard curve of MP00440-2, TREM2 Recombinant Matched Antibody Pair, PBS Only. Capture antibody: 83438-3-PBS. Detection antibody: 83438-5-PBS. Standard: Eg0747. Range: 0.313-40 ng/mL



Cytometric bead array standard curve of MP00440-3, TREM2 Recombinant Matched Antibody Pair, PBS Only. Capture antibody: 83438-4-PBS. Detection antibody: 83438-5-PBS. Standard: Eg0747. Range: 0.313-40 ng/mL