

For Research Use Only

IFIT1 Recombinant antibody

Catalog Number: 83423-1-RR



Basic Information

Catalog Number: 83423-1-RR	GenBank Accession Number: BC007091	Purification Method: Protein A purification
Size: 100ul , Concentration: 1000 ug/ml by Nanodrop;	GeneID (NCBI): 3434	CloneNo.: 240132G11
Source: Rabbit	UNIPROT ID: P09914	Recommended Dilutions: WB 1:5000-1:50000 IHC 1:200-1:800
Isotype: IgG	Full Name: interferon-induced protein with tetratricopeptide repeats 1	
Immunogen Catalog Number: AG19691	Calculated MW: 478 aa, 55 kDa	
	Observed MW: 55-65 kDa	

Applications

Tested Applications:
WB, IHC, FC (Intra), ELISA

Species Specificity:
human

Positive Controls:

WB: IFN alpha treated HeLa cells, SGC-7901 cells
IHC: human intrahepatic cholangiocarcinoma tissue,

Note-IHC: suggested antigen retrieval with TE buffer pH 9.0; (*) Alternatively, antigen retrieval may be performed with citrate buffer pH 6.0

Background Information

IFIT1, also known as glucocorticoid-attenuated response gene 16 protein (GARG-16), is a 463 amino acid protein belonging to the IFIT family. IFIT genes comprise a large family with three (IFIT1, IFIT2, and IFIT3) and four (IFIT1, IFIT2, IFIT3, and IFIT5) members in mice and humans, respectively. IFIT1 specifically bound virus PPP-RNA forms a complex with IFIT2 and IFIT3 to sequester the viral PPP-RNA and prevent virus replication.

Storage

Storage:
Store at -20°C. Stable for one year after shipment.

Storage Buffer:
PBS with 0.02% sodium azide and 50% glycerol pH 7.3.

Aliquoting is unnecessary for -20°C storage

*** 20ul sizes contain 0.1% BSA

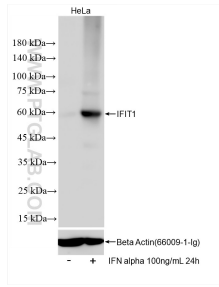
For technical support and original validation data for this product please contact:

T: 1 (888) 4PTGLAB (1-888-478-4522) (toll free in USA), or 1(312) 455-8498 (outside USA)

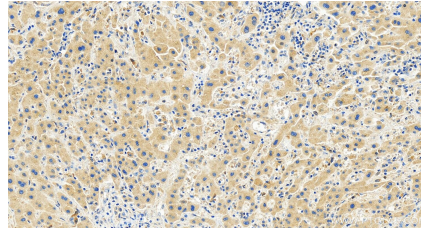
E: proteintech@ptglab.com
W: ptglab.com

This product is exclusively available under Proteintech Group brand and is not available to purchase from any other manufacturer.

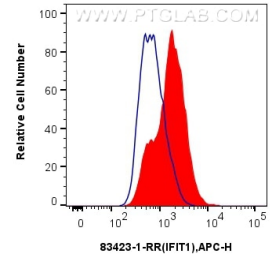
Selected Validation Data



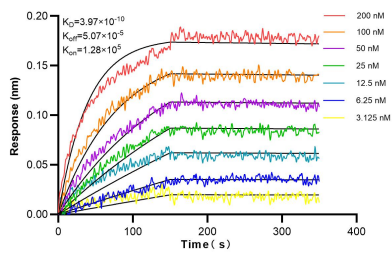
IFN alpha treated HeLa cells were subjected to SDS PAGE followed by western blot with 83423-1-RR (IFIT1 antibody) at dilution of 1:10000 incubated at room temperature for 1.5 hours.



Immunohistochemical analysis of paraffin-embedded human intrahepatic cholangiocarcinoma tissue slide using 83423-1-RR (IFIT1 antibody) at dilution of 1:400 (under 20x lens). Heat mediated antigen retrieval with Tris-EDTA buffer (pH 9.0).



1×10^6 HeLa cells were intracellularly stained with 0.25 ug Ifit1 Recombinant Antibody (83423-1-RR, Clone:240132G11) and APC-Conjugated AffiniPure Goat Anti-Rabbit IgG(H+L)(red), or 0.25 ug Isotype Control (blue). Cells were fixed with 4% PFA and permeabilized with Flow Cytometry Perm Buffer (PF00011-C).



Biolayer interferometry (BLI) kinetic assays of 83423-1-RR against Human IFIT1 were performed. The affinity constant is 0.397 nM.