

For Research Use Only

CD141/Thrombomodulin Recombinant antibody, PBS Only (Detector)

Catalog Number: 83416-7-PBS



Basic Information

Catalog Number: 83416-7-PBS	GenBank Accession Number: NM_000361.3	Purification Method: Protein A purification
Size: 100ug, Concentration: 1 mg/ml by Nanodrop;	GeneID (NCBI): 7056	CloneNo.: 240365F10
Source: Rabbit	UNIPROT ID: P07204	
Isotype: IgG	Full Name: thrombomodulin	
	Calculated MW: 60 kDa	

Applications

Tested Applications:
Sandwich ELISA, Indirect ELISA, Sample test

Species Specificity:
human

Product Information

83416-7-PBS targets CD141/Thrombomodulin as part of a matched antibody pair:

MP00411-3: 83416-1-PBS capture and 83416-7-PBS detection (validated in Sandwich ELISA)

Unconjugated rabbit recombinant monoclonal antibody in PBS only (BSA and azide free) storage buffer at a concentration of 1 mg/mL, ready for conjugation. Created using Proteintech's proprietary in-house recombinant technology. Recombinant production enables unrivalled batch-to-batch consistency, easy scale-up, and future security of supply.

This conjugation ready format makes antibodies ideal for use in many applications including: ELISAs, multiplex assays requiring matched pairs, mass cytometry, and multiplex imaging applications. Antibody use should be optimized by the end user for each application and assay.

Storage

Storage:
Store at -80°C.

Storage Buffer:
PBS Only

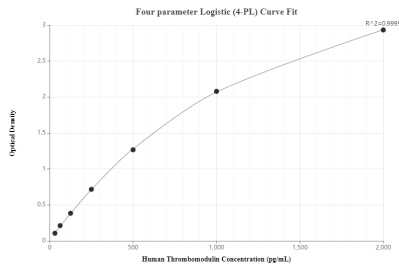
For technical support and original validation data for this product please contact:

T: 1 (888) 4PTGLAB (1-888-478-4522) (toll free in USA), or 1(312) 455-8498 (outside USA)

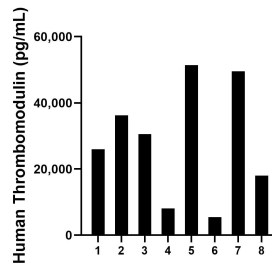
E: proteintech@ptglab.com
W: ptglab.com

This product is exclusively available under Proteintech Group brand and is not available to purchase from any other manufacturer.

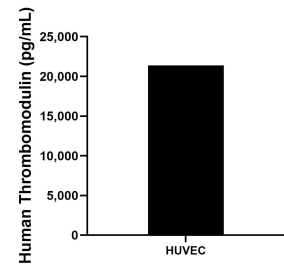
Selected Validation Data



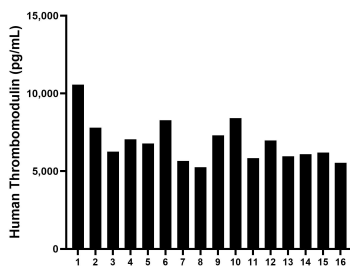
Sandwich ELISA standard curve of MP00411-3, Human CD141/Thrombomodulin Recombinant Matched Antibody Pair - PBS only. 83416-1-PBS was coated to a plate as the capture antibody and incubated with serial dilutions of standard Eg0944. 83416-7-PBS was HRP conjugated as the detection antibody. Range: 31.3-2000 pg/mL



Urine of eight individual healthy human donors was measured. The CD141/Thrombomodulin concentration of detected samples was determined to be 28,157.6 pg/mL with a range of 5,473.9 - 51,428.0 pg/mL.



The mean CD141/Thrombomodulin concentration was determined to be 21,389.33 pg/mL in HUVEC cell extract based on a 1.8 mg/mL extract load.



Serum of sixteen individual healthy human donors was measured. The CD141/Thrombomodulin concentration of detected samples was determined to be 6,871.5 pg/mL with a range of 5,248.2 - 10,568.0 pg/mL.