

For Research Use Only

CD141/Thrombomodulin Recombinant antibody, PBS Only

Catalog Number: 83416-4-PBS



Basic Information

Catalog Number: 83416-4-PBS	GenBank Accession Number: NM_000361.3	Purification Method: Protein A purification
Size: 100ug , Concentration: 1 mg/ml by Nanodrop;	GeneID (NCBI): 7056	CloneNo.: 240365D1
Source: Rabbit	UNIPROT ID: P07204	
Isotype: IgG	Full Name: thrombomodulin	
	Calculated MW: 60 kDa	
	Observed MW: 100-105 kDa	

Applications

Tested Applications:
WB, IHC, IF/ICC, ELISA

Species Specificity:
human

Background Information

Thrombomodulin, also known as CD141, is an endothelial cell surface glycoprotein that forms a 1:1 complex with the coagulation factor thrombin and plays an important role as a natural anticoagulant. Thrombomodulin serves to convert thrombin from a procoagulant protein into the activator for protein C. Once converted to activated protein C (APC), this protein serves as a major anticoagulant in blood (PMID: 2827310). Thrombomodulin is also located in other cells (keratinocytes, osteoblasts, macrophages,...) where it might be involved in cell differentiation or in inflammation (PMID: 9814688). In humans, thrombomodulin is encoded by the THBD gene. Mutations in this gene are a cause of thromboembolic disease, also known as inherited thrombophilia. Thrombomodulin is glycosylated and has an apparent molecular weight of 75 to 110 kDa (PMID: 1650405; 2827310).

Storage

Storage:
Store at -80°C.

Storage Buffer:
PBS Only

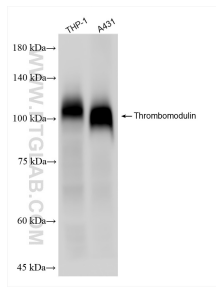
For technical support and original validation data for this product please contact:

T: 1 (888) 4PTGLAB (1-888-478-4522) (toll free in USA), or 1(312) 455-8498 (outside USA)

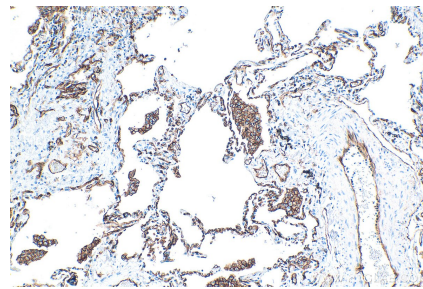
E: proteintech@ptglab.com
W: ptglab.com

This product is exclusively available under Proteintech Group brand and is not available to purchase from any other manufacturer.

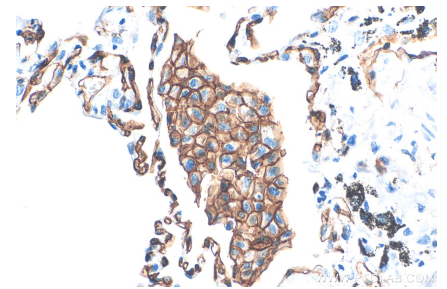
Selected Validation Data



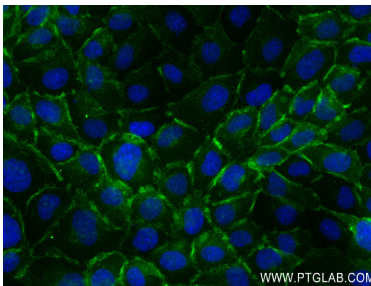
Various lysates were subjected to SDS PAGE followed by western blot with 83416-4-RR (Thrombomodulin antibody) at dilution of 1:10000 incubated at room temperature for 1.5 hours. This data was developed using the same antibody clone with 83416-4-PBS in a different storage buffer formulation.



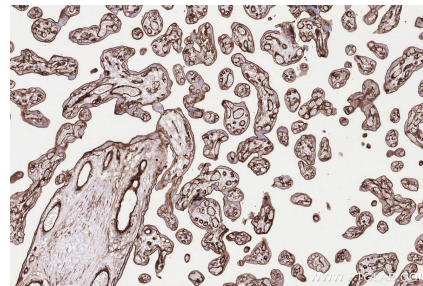
Immunohistochemical analysis of paraffin-embedded human lung tissue slide using 83416-4-RR (Thrombomodulin antibody) at dilution of 1:1000 (under 10x lens). Heat mediated antigen retrieval with Tris-EDTA buffer (pH 9.0). This data was developed using the same antibody clone with 83416-4-PBS in a different storage buffer formulation.



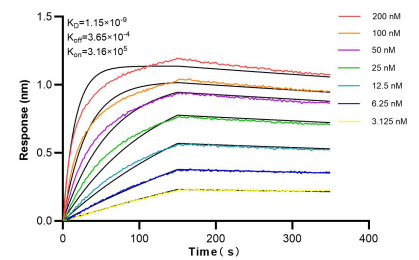
Immunohistochemical analysis of paraffin-embedded human lung tissue slide using 83416-4-RR (Thrombomodulin antibody) at dilution of 1:1000 (under 40x lens). Heat mediated antigen retrieval with Tris-EDTA buffer (pH 9.0). This data was developed using the same antibody clone with 83416-4-PBS in a different storage buffer formulation.



Immunofluorescent analysis of (4% PFA) fixed A431 cells using Thrombomodulin antibody (83416-4-RR, Clone: 240365D1) at dilution of 1:250 and CoraLite®488-Conjugated AffiniPure Goat Anti-Rabbit IgG(H+L) (SA00013-2). This data was developed using the same antibody clone with 83416-4-PBS in a different storage buffer formulation.



Immunohistochemical analysis of paraffin-embedded human placenta tissue slide using 83416-4-RR (CD141/Thrombomodulin antibody) at dilution of 1:4000 (under 10x lens). Heat mediated antigen retrieval with Tris-EDTA buffer (pH 9.0). This data was developed using the same antibody clone with 83416-4-PBS in a different storage buffer formulation.



Bi-layer interferometry (BLI) kinetic assays of 83416-4-RR against Human CD141/Thrombomodulin were performed. The affinity constant is 1.15 nM.