

For Research Use Only

Mouse Osteopontin Recombinant antibody, PBS Only

Catalog Number: 83413-6-PBS



Basic Information

Catalog Number:

83413-6-PBS

Size:

100ug , Concentration: 1 mg/ml by Nanodrop;

Source:

Rabbit

Isotype:

IgG

GenBank Accession Number:

NM_001204233.1

GeneID (NCBI):

20750

UNIPROT ID:

Q547B5

Full Name:

secreted phosphoprotein 1

Calculated MW:

32kd

Observed MW:

60 kDa

Purification Method:

Protein A purification

CloneNo.:

240250A1

Applications

Tested Applications:

WB, IF/ICC, IF-P, ELISA

Species Specificity:

mouse

Background Information

Osteopontin (OPN) is also named as 2AR, minopontin, bone sialoprotein 1, Spp1, Eta-1 and Op, and belongs to the osteopontin family. Osteopontin is major non-collagenous bone protein that binds tightly to hydroxyapatite. It is a highly phosphorylated glycoprophosphoprotein having acidic characteristics and rich in aspartic acid (PMID: 30003880). And it acts as a cytokine involved in enhancing production of interferon-gamma and interleukin-12 and reducing production of interleukin-10 and is essential in the pathway that leads to type I immunity (PMID:2351930, PMID:10657301). OPN, a multifunctional protein, has important functions on cardiovascular diseases, cancer, diabetes and kidney stone diseases and in the process of inflammation, biomineralization, cell viability and wound healing (PMID: 30003880). Osteopontin (OPN) is a pleiotropic glycoprotein expressed in various cell types in animals and in humans, including bone, immune, smooth muscle, epithelial and endothelial cells. Moreover, OPN is found in kidneys (in the thick ascending limbs of the loop of Henle and in distal nephrons) and urine (PMID:30456594).

Storage

Storage:

Store at -80°C.

Storage Buffer:

PBS Only

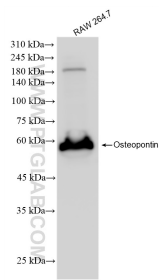
For technical support and original validation data for this product please contact:

T: 1 (888) 4PTGLAB (1-888-478-4522) (toll free in USA), or 1(312) 455-8498 (outside USA)

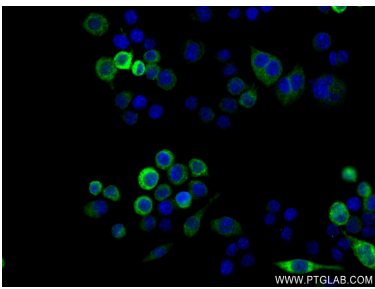
E: proteintech@ptglab.com
W: ptglab.com

This product is exclusively available under Proteintech Group brand and is not available to purchase from any other manufacturer.

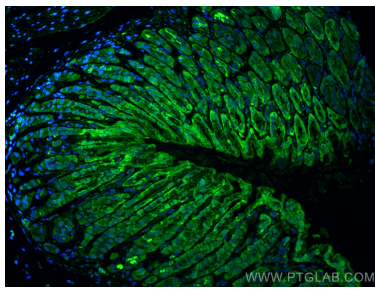
Selected Validation Data



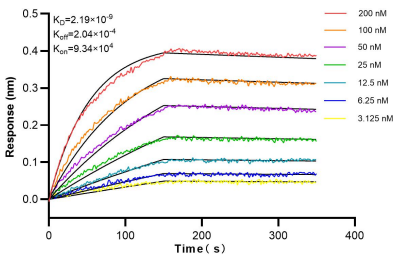
RAW 264.7 cells were subjected to SDS PAGE followed by western blot with 83413-6-RR (Osteopontin antibody) at dilution of 1:10000 incubated at room temperature for 1.5 hours. This data was developed using the same antibody clone with 83413-6-PBS in a different storage buffer formulation.



Immunofluorescent analysis of (4% PFA) fixed LPS and Brefeldin A treated RAW 264.7 cells using Osteopontin antibody (83413-6-RR, Clone: 240250A1) at dilution of 1:250 and CoraLite®488-Conjugated AffiniPure Goat Anti-Rabbit IgG(H+L) (SA00013-2). This data was developed using the same antibody clone with 83413-6-PBS in a different storage buffer formulation.



Immunofluorescent analysis of (4% PFA) fixed paraffin-embedded mouse stomach tissue using Osteopontin antibody (83413-6-RR, Clone: 240250A1) at dilution of 1:200 and CoraLite®488-Conjugated Goat Anti-Rabbit IgG(H+L) (SA00013-2). Heat mediated antigen retrieval with Tris-EDTA buffer (pH 9.0). This data was developed using the same antibody clone with 83413-6-PBS in a different storage buffer formulation.



Biolayer interferometry (BLI) kinetic assays of 83413-6-RR against Mouse Osteopontin were performed. The affinity constant is 2.19 nM.