

For Research Use Only

# C13orf18 Recombinant antibody, PBS Only (Capture)

Catalog Number:83411-5-PBS



## Basic Information

|   |  |   |
|---|--|---|
| <b>Catalog Number:</b><br>83411-5-PBS                       | <b>GenBank Accession Number:</b><br>BC032311             | <b>Purification Method:</b><br>Protein A purification |
| <b>Size:</b><br>100ug , Concentration: 1 mg/ml by Nanodrop; | <b>GeneID (NCBI):</b><br>80183                           | <b>CloneNo.:</b><br>240259F12                         |
| <b>Source:</b><br>Rabbit                                    | <b>UNIPROT ID:</b><br>Q9H714                             |   |
| <b>Isotype:</b><br>IgG                                      | <b>Full Name:</b><br>chromosome 13 open reading frame 18 |   |
| <b>Immunogen Catalog Number:</b><br>AG15474                 | <b>Calculated MW:</b><br>662 aa, 73 kDa                  |   |

## Applications

**Tested Applications:**  
Cytometric bead array, Indirect ELISA

**Species Specificity:**  
human

## Product Information

83411-5-PBS targets C13orf18 as part of a matched antibody pair:

MP00398-1: 83411-5-PBS capture and 83411-3-PBS detection (validated in Cytometric bead array)

MP00398-3: 83411-5-PBS capture and 83411-1-PBS detection (validated in Cytometric bead array)

Unconjugated rabbit recombinant monoclonal antibody in PBS only (BSA and azide free) storage buffer at a concentration of 1 mg/mL, ready for conjugation. Created using Proteintech's proprietary in-house recombinant technology. Recombinant production enables unrivalled batch-to-batch consistency, easy scale-up, and future security of supply.

This conjugation ready format makes antibodies ideal for use in many applications including: ELISAs, multiplex assays requiring matched pairs, mass cytometry, and multiplex imaging applications. Antibody use should be optimized by the end user for each application and assay.

## Storage

**Storage:**  
Store at -80°C.  
**Storage Buffer:**  
PBS Only

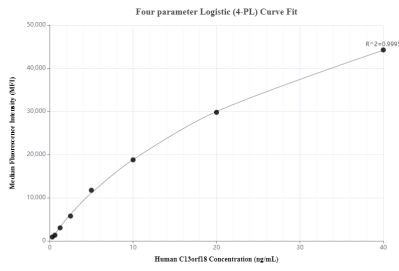
For technical support and original validation data for this product please contact:

T: 1 (888) 4PTGLAB (1-888-478-4522) (toll free in USA), or 1(312) 455-8498 (outside USA)

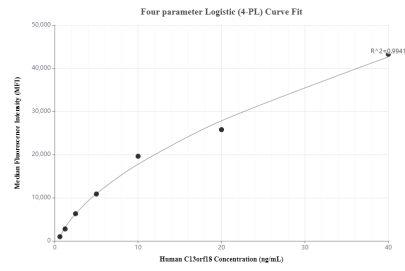
E: [proteintech@ptglab.com](mailto:proteintech@ptglab.com)  
W: [ptglab.com](http://ptglab.com)

**This product is exclusively available under Proteintech Group brand and is not available to purchase from any other manufacturer.**

## Selected Validation Data



Cytometric bead array standard curve of MP00398-1, C13orf18 Recombinant Matched Antibody Pair, PBS Only. Capture antibody: 83411-5-PBS. Detection antibody: 83411-3-PBS. Standard: Ag15474. Range: 0.313-40 ng/mL.



Cytometric bead array standard curve of MP00398-3, C13orf18 Recombinant Matched Antibody Pair, PBS Only. Capture antibody: 83411-5-PBS. Detection antibody: 83411-1-PBS. Standard: Ag15474. Range: 0.625-40 ng/mL.