

For Research Use Only

Lactotransferrin/LTF Recombinant antibody, PBS Only (Capture)

Catalog Number: 83409-4-PBS



Basic Information

Catalog Number: 83409-4-PBS	GenBank Accession Number: NM_002343.6	Purification Method: Protein A purification
Size: 100ug , Concentration: 1 mg/ml by Nanodrop;	GeneID (NCBI): 4057	CloneNo.: 240280H3
Source: Rabbit	UNIPROT ID: P02788-1	
Isotype: IgG	Full Name: lactotransferrin	
	Calculated MW: 78 kDa	

Applications

Tested Applications:
Cytometric bead array, Sandwich ELISA, Indirect ELISA, Sample test

Species Specificity:
human

Product Information

83409-4-PBS targets Lactotransferrin/LTF as part of a matched antibody pair.

MP00429-1: 83409-4-PBS capture and 83409-1-PBS detection (validated in Cytometric bead array, Sandwich ELISA)

MP00429-3: 83409-4-PBS capture and 83409-3-PBS detection (validated in Cytometric bead array)

Unconjugated rabbit recombinant monoclonal antibody in PBS only (BSA and azide free) storage buffer at a concentration of 1 mg/mL, ready for conjugation. Created using Proteintech's proprietary in-house recombinant technology. Recombinant production enables unrivalled batch-to-batch consistency, easy scale-up, and future security of supply.

This conjugation ready format makes antibodies ideal for use in many applications including: ELISAs, multiplex assays requiring matched pairs, mass cytometry, and multiplex imaging applications. Antibody use should be optimized by the end user for each application and assay.

Storage

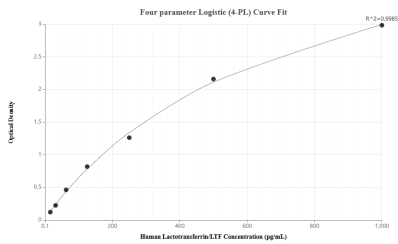
Storage:
Store at -80°C.

Storage Buffer:
PBS Only

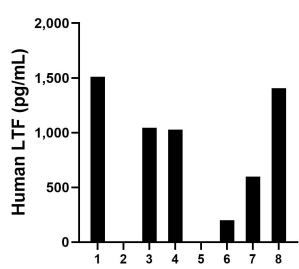
For technical support and original validation data for this product please contact:
T: 1 (888) 4PTGLAB (1-888-478-4522) (toll free in USA), or 1(312) 455-8498 (outside USA)
E: proteintech@ptglab.com
W: ptglab.com

This product is exclusively available under Proteintech Group brand and is not available to purchase from any other manufacturer.

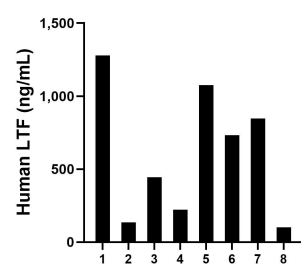
Selected Validation Data



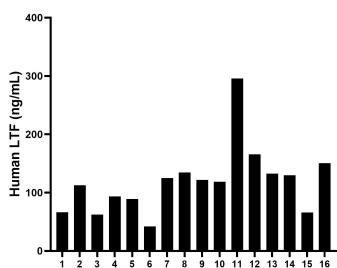
Sandwich ELISA standard curve of MP00429-1, Human Lactotransferrin/LTF Recombinant Matched Antibody Pair - PBS only. 83409-4-PBS was coated to a plate as the capture antibody and incubated with serial dilutions of standard Eg0888. 83409-1-PBS was HRP conjugated as the detection antibody. Range: 15.6-1000 pg/mL



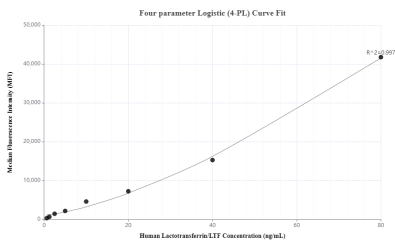
Urine of eight humans was measured. The Lactotransferrin/LTF concentration of these samples was determined to be 964.611 pg/mL, with a range of 201.321 - 1,510.588. pg/mL



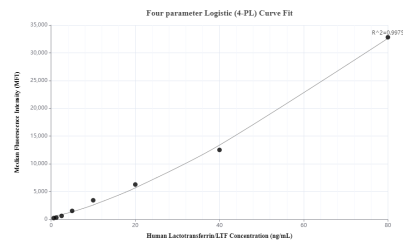
Saliva of eight humans was measured. The Lactotransferrin/LTF concentration of these samples was determined to be 604.833 ng/mL, with a range of 101.828 - 1,277.928 pg/mL



Serum of sixteen humans was measured. The Lactotransferrin/LTF concentration of these samples was determined to be 119.112 ng/mL, with a range of 42.104 - 295.911 pg/mL



Cytometric bead array standard curve of MP00429-1, Lactotransferrin/LTF Recombinant Matched Antibody Pair, PBS Only. Capture antibody: 83409-4-PBS. Detection antibody: 83409-1-PBS. Standard: Eg0888. Range: 0.625-80 ng/mL



Cytometric bead array standard curve of MP00429-3, Lactotransferrin/LTF Recombinant Matched Antibody Pair, PBS Only. Capture antibody: 83409-4-PBS. Detection antibody: 83409-3-PBS. Standard: Eg0888. Range: 0.625-80 ng/mL