

For Research Use Only

# GGTLC1 Recombinant antibody

Catalog Number: 83392-3-RR



## Basic Information

<b>Catalog Number:</b> 83392-3-RR	<b>GenBank Accession Number:</b> BC040904	<b>Purification Method:</b> Protein A purification
<b>Size:</b> 100ul , Concentration: 1000 ug/ml by Nanodrop;	<b>GeneID (NCBI):</b> 92086	<b>CloneNo.:</b> 240297D9
<b>Source:</b> Rabbit	<b>UNIPROT ID:</b> Q9BX51	<b>Recommended Dilutions:</b> WB 1:500-1:3000
<b>Isotype:</b> IgG	<b>Full Name:</b> gamma-glutamyltransferase light chain 1	
<b>Immunogen Catalog Number:</b> AG11592	<b>Calculated MW:</b> 225 aa, 24 kDa	
	<b>Observed MW:</b> 20-24 kDa	

## Applications

<b>Tested Applications:</b> WB, ELISA	<b>Positive Controls:</b> WB : HepG2 cells, L02 cells, human urine
<b>Species Specificity:</b> Human	

## Background Information

Gamma-glutamyltransferase light chain 1 (GGTLC1), initially named GGT6, then GGT4, and later GGTLC1 in 2008, is a member of the gamma-glutamyl transferase (GGT) family. The most ubiquitously expressed human GGT gene, GGT1, encodes a single transmembrane polypeptide that is post-translationally processed to form a heavy and a light chain. Knockdown of GGTLC1 in Endometrial cancer (EC) cells was shown to induce G0/G1 phase arrest and apoptosis, underscoring the significance of GGTLC1 as a key regulator of these cellular processes in EC (PMID: 38841516).

## Storage

**Storage:**  
Store at -20°C. Stable for one year after shipment.  
**Storage Buffer:**  
PBS with 0.02% sodium azide and 50% glycerol pH 7.3.  
Aliquoting is unnecessary for -20°C storage

\*\*\* 20ul sizes contain 0.1% BSA

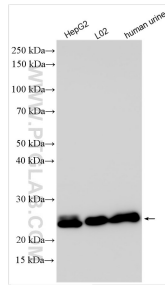
For technical support and original validation data for this product please contact:

T: 1 (888) 4PTGLAB (1-888-478-4522) (toll free in USA), or 1(312) 455-8498 (outside USA)

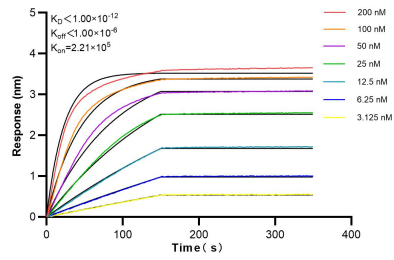
E: proteintech@ptglab.com  
W: ptglab.com

This product is exclusively available under Proteintech Group brand and is not available to purchase from any other manufacturer.

## Selected Validation Data



Various lysates were subjected to SDS PAGE followed by western blot with 83392-3-RR (GGTL1 antibody) at dilution of 1:1500 incubated at room temperature for 1.5 hours.



Biolayer interferometry (BLI) kinetic assays of 83392-3-RR against Human GGTL1 were performed. The affinity constant is below 1 pM.