

For Research Use Only

GGTLC1 Recombinant antibody, PBS Only (Detector)



Catalog Number: 83392-3-PBS

Basic Information

Catalog Number: 83392-3-PBS	GenBank Accession Number: BC040904	Purification Method: Protein A purification
Size: 100ug , Concentration: 1 mg/ml by Nanodrop;	GeneID (NCBI): 92086	CloneNo.: 240297D9
Source: Rabbit	UNIPROT ID: Q9BX51	
Isotype: IgG	Full Name: gamma-glutamyltransferase light chain 1	
Immunogen Catalog Number: AG11592	Calculated MW: 225 aa, 24 kDa	

Applications

Tested Applications:
WB, Indirect ELISA, Cytometric bead array

Species Specificity:
Human

Product Information

83392-3-PBS targets GGTLC1 as part of a matched antibody pair:

MP00433-2: 83392-2-PBS capture and 83392-3-PBS detection (validated in Cytometric bead array)

Unconjugated rabbit recombinant monoclonal antibody in PBS only (BSA and azide free) storage buffer at a concentration of 1 mg/mL, ready for conjugation. Created using Proteintech's proprietary in-house recombinant technology. Recombinant production enables unrivalled batch-to-batch consistency, easy scale-up, and future security of supply.

This conjugation ready format makes antibodies ideal for use in many applications including: ELISAs, multiplex assays requiring matched pairs, mass cytometry, and multiplex imaging applications. Antibody use should be optimized by the end user for each application and assay.

Storage

Storage:
Store at -80°C.

Storage Buffer:
PBS Only

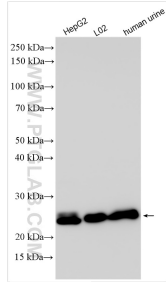
For technical support and original validation data for this product please contact:

T: 1 (888) 4PTGLAB (1-888-478-4522) (toll free in USA), or 1(312) 455-8498 (outside USA)

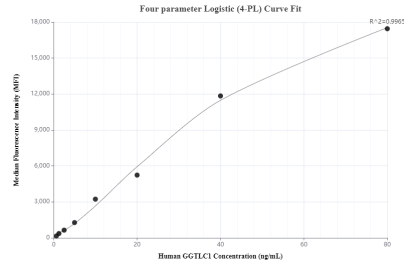
E: proteintech@ptglab.com
W: ptglab.com

This product is exclusively available under Proteintech Group brand and is not available to purchase from any other manufacturer.

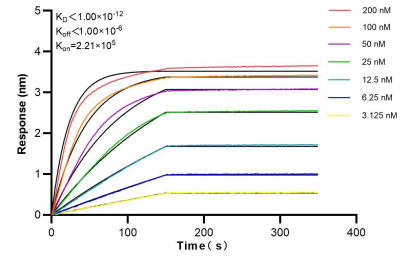
Selected Validation Data



Various lysates were subjected to SDS PAGE followed by western blot with 83392-3-RR (GGTLC1 antibody) at dilution of 1:1500 incubated at room temperature for 1.5 hours. This data was developed using the same antibody clone with 83392-3-PBS in a different storage buffer formulation.



Cytometric bead array standard curve of MP00433-2, GGTL1 Recombinant Matched Antibody Pair, PBS Only. Capture antibody: 83392-2-PBS. Detection antibody: 83392-3-PBS. Standard: Ag11592. Range: 0.625-80 ng/mL.



Bi-layer interferometry (BLI) kinetic assays of 83392-3-RR against Human GGTL1 were performed. The affinity constant is below 1 pM.