

For Research Use Only

BRCA1 Recombinant antibody, PBS Only



Catalog Number: 83390-6-PBS

Basic Information

Catalog Number: 83390-6-PBS	GenBank Accession Number: BC115037	Purification Method: Protein A purification
Size: 100ug, Concentration: 1 mg/ml by Nanodrop;	GeneID (NCBI): 672	CloneNo.: 240285E10
Source: Rabbit	UNIPROT ID: P38398	
Isotype: IgG	Full Name: breast cancer 1, early onset	
Immunogen Catalog Number: AG17946	Calculated MW: 1863 aa, 208 kDa	

Applications

Tested Applications:
ELISA, WB

Species Specificity:
human

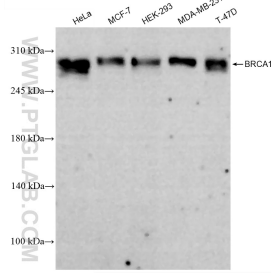
Storage

Storage:
Store at -80°C.
Storage Buffer:
PBS Only

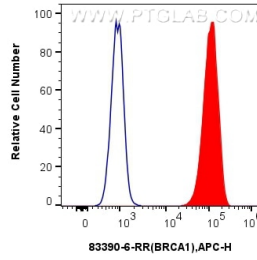
For technical support and original validation data for this product please contact:
T: 1 (888) 4PTGLAB (1-888-478-4522) (toll free in USA), or 1(312) 455-8498 (outside USA) E: proteintech@ptglab.com
W: ptglab.com

This product is exclusively available under Proteintech Group brand and is not available to purchase from any other manufacturer.

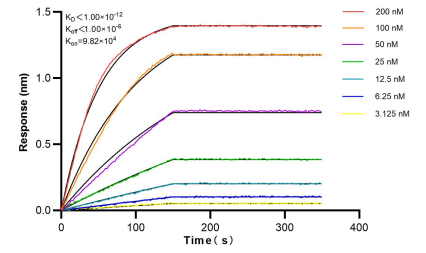
Selected Validation Data



Various lysates were subjected to SDS PAGE followed by western blot with 83390-6-RR (BRCA1 antibody) at dilution of 1:10000 incubated at room temperature for 1.5 hours. This data was developed using the same antibody clone with 83390-6-PBS in a different storage buffer formulation.



1x10⁶ MCF-7 cells were intracellularly stained with 0.25 ug BRCA1 Recombinant antibody (83390-6-RR, Clone:240285E10) and APC-Conjugated AffiniPure Goat Anti-Rabbit IgG(H+L)(red), or 0.25 ug Isotype Control (blue). Cells were fixed and permeabilized with Transcription Factor Staining Buffer Kit (PF00011). This data was developed using the same antibody clone with 83390-6-PBS in a different storage buffer formulation.



Biolayer interferometry (BLI) kinetic assays of 83390-6-RR against Human BRCA1 were performed. The affinity constant is below 1 pM.