

For Research Use Only

# CD28 Recombinant antibody, PBS Only (Capture)

Catalog Number: 83383-8-PBS



## Basic Information

<b>Catalog Number:</b> 83383-8-PBS	<b>GenBank Accession Number:</b> BC093698	<b>Purification Method:</b> Protein A purification
<b>Size:</b> 100ug, Concentration: 1 mg/ml by Nanodrop;	<b>GeneID (NCBI):</b> 940	<b>CloneNo.:</b> 240353H8
<b>Source:</b> Rabbit	<b>ENSEMBL Gene ID:</b> ENSG00000178562	
<b>Isotype:</b> IgG	<b>UNIPROT ID:</b> P10747	
	<b>Full Name:</b> CD28 molecule	
	<b>Calculated MW:</b> 220 aa, 25 kDa	

## Applications

**Tested Applications:**  
Sandwich ELISA, Indirect ELISA, Sample test

**Species Specificity:**  
human

## Product Information

83383-8-PBS targets CD28 as part of a matched antibody pair:

MP00136-5: 83383-8-PBS capture and 83383-2-PBS detection (validated in Sandwich ELISA)

Unconjugated rabbit recombinant monoclonal antibody in PBS only (BSA and azide free) storage buffer at a concentration of 1 mg/mL, ready for conjugation. Created using Proteintech's proprietary in-house recombinant technology. Recombinant production enables unrivalled batch-to-batch consistency, easy scale-up, and future security of supply.

This conjugation ready format makes antibodies ideal for use in many applications including: ELISAs, multiplex assays requiring matched pairs, mass cytometry, and multiplex imaging applications. Antibody use should be optimized by the end user for each application and assay.

## Storage

**Storage:**  
Store at -80°C.  
**Storage Buffer:**  
PBS Only

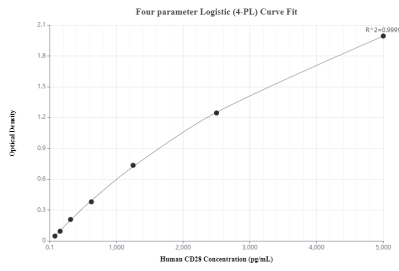
For technical support and original validation data for this product please contact:

T: 1 (888) 4PTGLAB (1-888-478-4522) (toll free  
in USA), or 1(312) 455-8498 (outside USA)

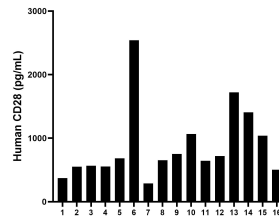
E: [proteintech@ptglab.com](mailto:proteintech@ptglab.com)  
W: [ptglab.com](http://ptglab.com)

**This product is exclusively available under Proteintech Group brand and is not available to purchase from any other manufacturer.**

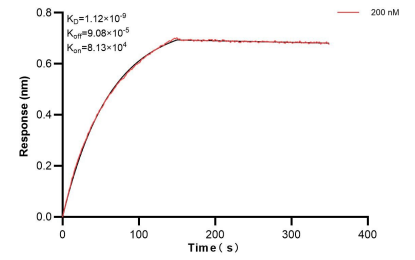
## Selected Validation Data



Sandwich ELISA standard curve of MP00136-5, Human CD28 Monoclonal Matched Antibody Pair - PBS only. 83383-8-PBS was coated to a plate as the capture antibody and incubated with serial dilutions of standard Eg0889. 83383-2-PBS was HRP conjugated as the detection antibody. Range: 78.125-5000 pg/mL.



Serum of sixteen individual healthy human donors were measured. The human CD28 concentration of detected samples was determined to be 879.1 pg/mL with a range of 287.8 - 2,540.7 pg/mL.



Bi-layer interferometry (BLI) kinetic assay of 83383-8-PBS against Human CD28 was performed. The affinity constant is 1.12 nM.