

For Research Use Only

CD28 Recombinant antibody, PBS Only (Detector)

Catalog Number: 83383-2-PBS



Basic Information

Catalog Number: 83383-2-PBS	GenBank Accession Number: BC093698	Purification Method: Protein A purification
Size: 100ug, Concentration: 1 mg/ml by Nanodrop;	GeneID (NCBI): 940	CloneNo.: 240353H7
Source: Rabbit	ENSEMBL Gene ID: ENSG00000178562	
Isotype: IgG	UNIPROT ID: P10747	
	Full Name: CD28 molecule	
	Calculated MW: 220 aa, 25 kDa	

Applications

Tested Applications:
Cytometric bead array, Sandwich ELISA, Indirect ELISA, Sample test

Species Specificity:
human

Product Information

83383-2-PBS targets CD28 as part of a matched antibody pair:

MP00136-4: 83383-3-PBS capture and 83383-2-PBS detection (validated in Cytometric bead array)

MP00136-5: 83383-8-PBS capture and 83383-2-PBS detection (validated in Sandwich ELISA)

Unconjugated rabbit recombinant monoclonal antibody in PBS only (BSA and azide free) storage buffer at a concentration of 1 mg/mL, ready for conjugation. Created using Proteintech's proprietary in-house recombinant technology. Recombinant production enables unrivalled batch-to-batch consistency, easy scale-up, and future security of supply.

This conjugation ready format makes antibodies ideal for use in many applications including: ELISAs, multiplex assays requiring matched pairs, mass cytometry, and multiplex imaging applications. Antibody use should be optimized by the end user for each application and assay.

Storage

Storage:
Store at -80°C.
Storage Buffer:
PBS Only

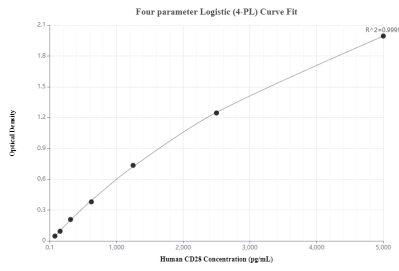
For technical support and original validation data for this product please contact:

T: 1 (888) 4PTGLAB (1-888-478-4522) (toll free in USA), or 1(312) 455-8498 (outside USA)

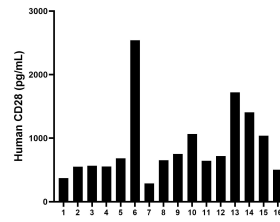
E: proteintech@ptglab.com
W: ptglab.com

This product is exclusively available under Proteintech Group brand and is not available to purchase from any other manufacturer.

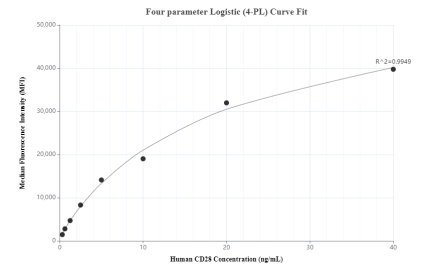
Selected Validation Data



Sandwich ELISA standard curve of MP00136-5, Human CD28 Monoclonal Matched Antibody Pair - PBS only. 83383-8-PBS was coated to a plate as the capture antibody and incubated with serial dilutions of standard Eg0889. 83383-2-PBS was HRP conjugated as the detection antibody. Range: 78.125-5000 pg/mL



Serum of sixteen individual healthy human donors were measured. The human CD28 concentration of detected samples was determined to be 879.1 pg/mL with a range of 287.8 - 2,540.7 pg/mL



Cytometric bead array standard curve of MP00136-4, CD28 Recombinant Matched Antibody Pair, PBS Only. Capture antibody: 83383-3-PBS. Detection antibody: 83383-2-PBS. Standard: Eg0889. Range: 0.313-40 ng/mL