

For Research Use Only

Cytokeratin 14 Recombinant antibody

Catalog Number:83379-1-RR



Basic Information

Catalog Number: 83379-1-RR	GenBank Accession Number: BC002690	Purification Method: Protein A purification
Size: 100ul , Concentration: 1000 ug/ml by Nanodrop;	GeneID (NCBI): 3861	CloneNo.: 1H22
Source: Rabbit	UNIPROT ID: P02533	Recommended Dilutions: WB 1:500-1:2800
Isotype: IgG	Full Name: keratin 14	
Immunogen Catalog Number: AG0188	Calculated MW: 472 aa, 52 kDa	
	Observed MW: 52 kDa	

Applications

Tested Applications: WB, ELISA	Positive Controls: WB : rat skin tissue,
Species Specificity: human, mouse, rat	

Background Information

Cytokeratin 14, one of about 20 different cytokeratin isotypes of human cells, is the intermediate filament protein characteristic of epithelial cells. Cytokeratin 14 is expressed in the basal compartment of all stratified squamous epithelia. In various kinds of human tumors, the appearance and increasing expression of Cytokeratin 14 were strikingly associated with higher grade and stage of carcinoma, with varying degrees of unfavorable prognosis. In lung squamous cell carcinoma(LSCC), Cytokeratin 14 was expressed in the tumor cell nests showing stromal invasion with fibrosis and lymph node metastases, indicating that Cytokeratin 14 involved in proliferation and metastasis of LSCC. Cytokeratin 14 expression is sometimes used in diagnosis of myoepithelioma and intraductal vs. invasive ductal carcinoma of the breast.

Storage

Storage:
Store at -20°C. Stable for one year after shipment.
Storage Buffer:
PBS with 0.02% sodium azide and 50% glycerol pH 7.3.
Aliquoting is unnecessary for -20°C storage

*** 20ul sizes contain 0.1% BSA

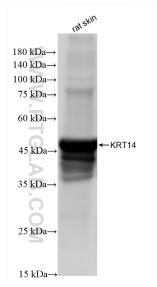
For technical support and original validation data for this product please contact:

T: 1 (888) 4PTGLAB (1-888-478-4522) (toll free in USA), or 1(312) 455-8498 (outside USA)

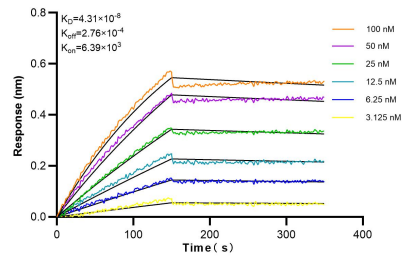
E: proteintech@ptglab.com
W: ptglab.com

This product is exclusively available under Proteintech Group brand and is not available to purchase from any other manufacturer.

Selected Validation Data



rat skin tissue were subjected to SDS PAGE followed by western blot with 83379-1-RR (KRT14 antibody) at dilution of 1:1400 incubated at room temperature for 1.5 hours.



Biolayer interferometry (BLI) kinetic assays of 83379-1-RR against Human Cytokeratin 14 were performed. The affinity constant is 43.1 nM.