

For Research Use Only

# NEIL1 Recombinant antibody, PBS Only (Detector)

Catalog Number: 83376-1-PBS



## Basic Information

<b>Catalog Number:</b> 83376-1-PBS	<b>GenBank Accession Number:</b> BC010876	<b>Purification Method:</b> Protein A purification
<b>Size:</b> 100ug , Concentration: 1 mg/ml by Nanodrop;	<b>GeneID (NCBI):</b> 79661	<b>CloneNo.:</b> 240322A8
<b>Source:</b> Rabbit	<b>UNIPROT ID:</b> Q96FI4	
<b>Isotype:</b> IgG	<b>Full Name:</b> nei endonuclease VIII-like 1 (E. coli)	
<b>Immunogen Catalog Number:</b> AG2793	<b>Calculated MW:</b> 390 aa, 44 kDa	

## Applications

**Tested Applications:**  
Cytometric bead array, Sandwich ELISA, Indirect ELISA, Sample test

**Species Specificity:**  
human

## Product Information

83376-1-PBS targets NEIL1 as part of a matched antibody pair:

MP00380-3: 83376-6-PBS capture and 83376-1-PBS detection (validated in Cytometric bead array, Sandwich ELISA)

Unconjugated rabbit recombinant monoclonal antibody in PBS only (BSA and azide free) storage buffer at a concentration of 1 mg/mL, ready for conjugation. Created using Proteintech's proprietary in-house recombinant technology. Recombinant production enables unrivalled batch-to-batch consistency, easy scale-up, and future security of supply.

This conjugation ready format makes antibodies ideal for use in many applications including: ELISAs, multiplex assays requiring matched pairs, mass cytometry, and multiplex imaging applications. Antibody use should be optimized by the end user for each application and assay.

## Storage

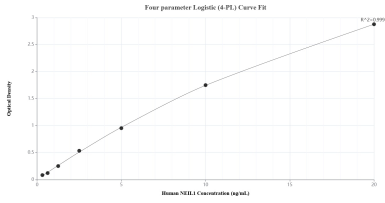
**Storage:**  
Store at -80°C.

**Storage Buffer:**  
PBS Only

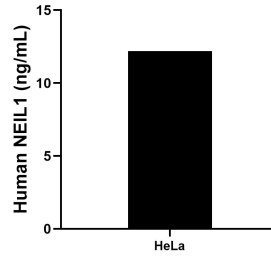
For technical support and original validation data for this product please contact:  
T: 1 (888) 4PTGLAB (1-888-478-4522) (toll free in USA), or 1(312) 455-8498 (outside USA)      E: proteintech@ptglab.com  
W: ptglab.com

This product is exclusively available under Proteintech Group brand and is not available to purchase from any other manufacturer.

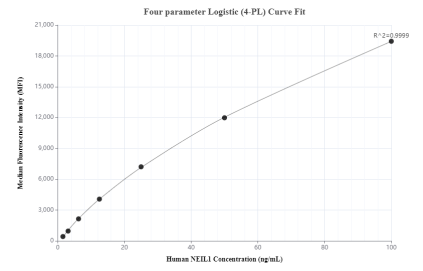
## Selected Validation Data



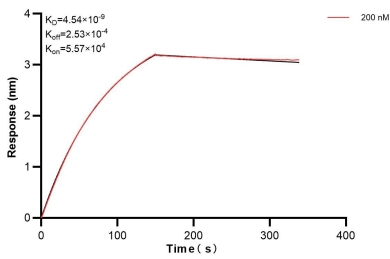
Sandwich ELISA standard curve of MP00380-3, Human NEIL1 Recombinant Matched Antibody Pair - PBS only. 83376-6-PBS was coated to a plate as the capture antibody and incubated with serial dilutions of standard Ag2793. 83376-1-PBS was HRP conjugated as the detection antibody. Range: 0.313-20 ng/mL



The mean NEIL1 concentration was determined to be 12.20 ng/mL in HeLa cell extract based on a 2.80 mg/mL extract load.



Cytometric bead array standard curve of MP00380-3, NEIL1 Recombinant Matched Antibody Pair, PBS Only. Capture antibody: 83376-6-PBS. Detection antibody: 83376-1-PBS. Standard: Ag2793. Range: 1.56-100 ng/mL



Bi-layer interferometry (BLI) kinetic assay of 83376-1-PBS against Human NEIL1 was performed. The affinity constant is 4.54 nM.