

For Research Use Only

MCP-1 Recombinant antibody

Catalog Number:83370-2-RR



Basic Information

Catalog Number: 83370-2-RR	GenBank Accession Number: NM_031530	Purification Method: Protein A purification
Size: 100ul , Concentration: 1000 ug/ml by Nanodrop;	GeneID (NCBI): 24770	CloneNo.: 240341G3
Source: Rabbit	UNIPROT ID: P14844	Recommended Dilutions: WB 1:5000-1:50000
Isotype: IgG	Full Name: chemokine (C-C motif) ligand 2	
	Calculated MW: 16 kDa	
	Observed MW: 20 kDa	

Applications

Tested Applications: WB, ELISA	Positive Controls: WB : LPS and Brefeldin A treated NR8383 cells,
Species Specificity: rat	

Background Information

Monocyte chemoattractant protein-1 (MCP-1/CCL2) is one of the key chemokines that regulate migration and infiltration of monocytes/macrophages. Both CCL2 and its receptor CCR2 have been demonstrated to be induced and involved in various diseases. Migration of monocytes from the blood stream across the vascular endothelium is required for routine immunological surveillance of tissues, as well as in response to inflammation.

Storage

Storage:
Store at -20°C. Stable for one year after shipment.
Storage Buffer:
PBS with 0.02% sodium azide and 50% glycerol pH 7.3.
Aliquoting is unnecessary for -20°C storage

*** 20ul sizes contain 0.1% BSA

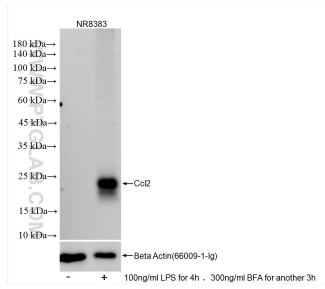
For technical support and original validation data for this product please contact:

T: 1 (888) 4PTGLAB (1-888-478-4522) (toll free in USA), or 1(312) 455-8498 (outside USA)

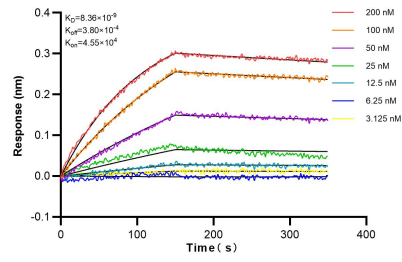
E: proteintech@ptglab.com
W: ptglab.com

This product is exclusively available under Proteintech Group brand and is not available to purchase from any other manufacturer.

Selected Validation Data



Untreated, LPS and Brefeldin A treated NR8383 cells were subjected to SDS PAGE followed by western blot with 83370-2-RR (Ccl2 antibody) at dilution of 1:10000 incubated at room temperature for 1.5 hours.



Biolayer interferometry (BLI) kinetic assays of 83370-2-RR against Rat MCP-1 were performed. The affinity constant is 0.836 nM.