

For Research Use Only

NCAM1/CD56 Recombinant antibody

Catalog Number:83365-6-RR



Basic Information

Catalog Number: 83365-6-RR	GenBank Accession Number: BC047244	Purification Method: Protein A purification
Size: 100ul , Concentration: 1000 ug/ml by Nanodrop;	GeneID (NCBI): 4684	CloneNo.: 240078C9
Source: Rabbit	ENSEMBL Gene ID: ENSG00000149294	Recommended Dilutions: WB 1:500-1:2000 IF/ICC 1:250-1:1000
Isotype: IgG	UNIPROT ID: P13591	
	Full Name: neural cell adhesion molecule 1	
	Calculated MW: 95 kDa	
	Observed MW: 160 kDa	

Applications

Tested Applications: WB, IF/ICC, ELISA	Positive Controls: WB : SH-SY5Y cells, IF/ICC : SH-SY5Y cells,
Species Specificity: human	

Background Information

Neural cell adhesion molecule 1 (NCAM1, also known as CD56) is a cell adhesion glycoprotein of the immunoglobulin (Ig) superfamily. It is a multifunction protein involved in synaptic plasticity, neurodevelopment, and neurogenesis. NCAM1 is expressed on human neurons, glial cells, skeletal muscle cells, NK cells and a subset of T cells, and the expression is observed in a wide variety of human tumors, including myeloma, myeloid leukemia, neuroendocrine tumors, Wilms' tumor, neuroblastoma, and NK/T cell lymphomas. Three major isoforms of NCAM1, with molecular masses of 120, 140, and 180 kDa, are generated by alternative splicing of mRNA (PMID: 9696812). The glycosylphosphatidylinositol (GPI)-anchored NCAM120 and the transmembrane NCAM140 and NCAM180 consist of five Ig-like domains and two fibronectin-type III repeats (FNIII). All three forms can be posttranslationally modified by addition of polysialic acid (PSA) (PMID: 14976519). Several other isoforms have also been described (PMID: 1856291).

Storage

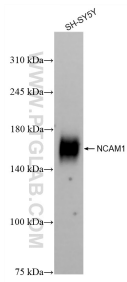
Storage:
Store at -20°C. Stable for one year after shipment.
Storage Buffer:
PBS with 0.02% sodium azide and 50% glycerol pH 7.3.
Aliquoting is unnecessary for -20°C storage

*** 20ul sizes contain 0.1% BSA

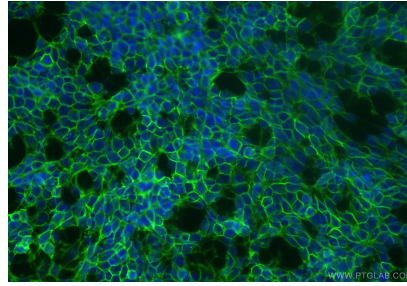
For technical support and original validation data for this product please contact:
T: 1 (888) 4PTGLAB (1-888-478-4522) (toll free in USA), or 1(312) 455-8498 (outside USA)
E: proteintech@ptglab.com
W: ptglab.com

This product is exclusively available under Proteintech Group brand and is not available to purchase from any other manufacturer.

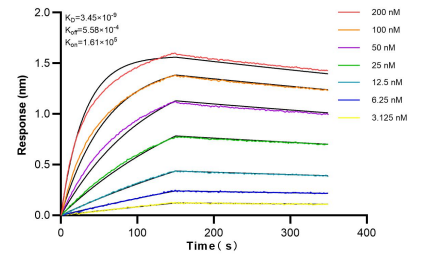
Selected Validation Data



SH-SY5Y cells were subjected to SDS PAGE followed by western blot with 83365-6-RR (NCAM1/CD56 antibody) at dilution of 1:1000 incubated at room temperature for 1.5 hours.



Immunofluorescent analysis of (-20°C Ethanol) fixed SH-SY5Y cells using NCAM1/CD56 antibody (83365-6-RR, Clone: 240078C9) at dilution of 1:500 and CoraLite®488-Conjugated Goat Anti-Rabbit IgG(H+L) (SA00013-2).



Biolayer interferometry (BLI) kinetic assays of 83365-6-RR against Human NCAM1/CD56 were performed. The affinity constant is 3.45 nM.