

For Research Use Only

# SLC25A46 Recombinant antibody

Catalog Number:83360-2-RR



## Basic Information

<b>Catalog Number:</b> 83360-2-RR	<b>GenBank Accession Number:</b> BC017169	<b>Purification Method:</b> Protein A purification
<b>Size:</b> 100ul , Concentration: 1000 ug/ml by Nanodrop;	<b>GeneID (NCBI):</b> 91137	<b>CloneNo.:</b> 240114G3
<b>Source:</b> Rabbit	<b>UNIPROT ID:</b> Q96AG3	<b>Recommended Dilutions:</b> WB 1:5000-1:50000
<b>Isotype:</b> IgG	<b>Full Name:</b> solute carrier family 25, member 46	
<b>Immunogen Catalog Number:</b> AG27293	<b>Calculated MW:</b> 418 aa, 46 kDa	
	<b>Observed MW:</b> 46 kDa	

## Applications

**Tested Applications:**  
WB, FC (Intra), ELISA

**Species Specificity:**  
human, mouse

**Positive Controls:**  
WB : HEK-293 cells, HepG2 cells, MCF-7 cells, HeLa cells, Jurkat cells, MDA-MB-231 cells, mouse brain tissue

## Background Information

Solute carrier family 25 member 46 (SLC25A46), a highly conserved protein among various species including vertebrates, is a nuclear gene encoding mitochondrial carriers. SLC25A46 is involved in mitochondrial fission and the transport of lipids from the endoplasmic reticulum to mitochondria (PMID: 33277645). SLC25A46 has 3 isoforms with molecular weights of 30, 37 and 46 kDa, respectively.

## Storage

**Storage:**  
Store at -20°C. Stable for one year after shipment.

**Storage Buffer:**  
PBS with 0.02% sodium azide and 50% glycerol pH 7.3.

Aliquoting is unnecessary for -20°C storage

\*\*\* 20ul sizes contain 0.1% BSA

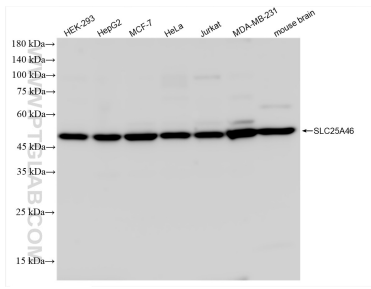
For technical support and original validation data for this product please contact:

T: 1 (888) 4PTGLAB (1-888-478-4522) (toll free in USA), or 1(312) 455-8498 (outside USA)

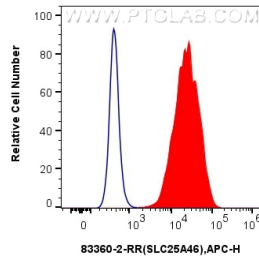
E: [proteintech@ptglab.com](mailto:proteintech@ptglab.com)  
W: [ptglab.com](http://ptglab.com)

This product is exclusively available under Proteintech Group brand and is not available to purchase from any other manufacturer.

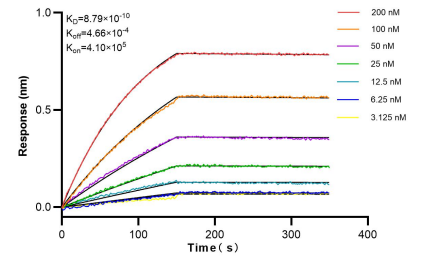
## Selected Validation Data



Various lysates were subjected to SDS PAGE followed by western blot with 83360-2-RR (SLC25A46 antibody) at dilution of 1:10000 incubated at room temperature for 1.5 hours.



$1 \times 10^6$  Caco-2 cells were intracellularly stained with 0.25  $\mu$ g SLC25A46 Recombinant antibody (83360-2-RR, Clone:240114G3) and APC-Conjugated AffiniPure Goat Anti-Rabbit IgG(H+L) (red), or 0.25  $\mu$ g Isotype Control (blue). Cells were fixed with 4% PFA and permeabilized with Flow Cytometry Perm Buffer (PF00011-C).



Bioluminescence resonance energy transfer (BRET) kinetic assays of 83360-2-RR against Human SLC25A46 were performed. The affinity constant is 0.879 nM.