

For Research Use Only

SLC25A46 Recombinant antibody, PBS Only (Capture)



Catalog Number: 83360-2-PBS

Basic Information

Catalog Number: 83360-2-PBS	GenBank Accession Number: BC017169	Purification Method: Protein A purification
Size: 100ug , Concentration: 1 mg/ml by Nanodrop;	GeneID (NCBI): 91137	CloneNo.: 240114G3
Source: Rabbit	UNIPROT ID: Q96AG3	
Isotype: IgG	Full Name: solute carrier family 25, member 46	
Immunogen Catalog Number: AG27293	Calculated MW: 418 aa, 46 kDa	

Applications

Tested Applications:
WB, Cytometric bead array, Indirect ELISA

Species Specificity:
human, mouse

Product Information

83360-2-PBS targets SLC25A46 as part of a matched antibody pair:

MP00369-1: 83360-2-PBS capture and 83360-3-PBS detection (validated in Cytometric bead array)

Unconjugated rabbit recombinant monoclonal antibody in PBS only (BSA and azide free) storage buffer at a concentration of 1 mg/mL, ready for conjugation. Created using Proteintech's proprietary in-house recombinant technology. Recombinant production enables unrivalled batch-to-batch consistency, easy scale-up, and future security of supply.

This conjugation ready format makes antibodies ideal for use in many applications including: ELISAs, multiplex assays requiring matched pairs, mass cytometry, and multiplex imaging applications. Antibody use should be optimized by the end user for each application and assay.

Storage

Storage:
Store at -80°C.

Storage Buffer:
PBS Only

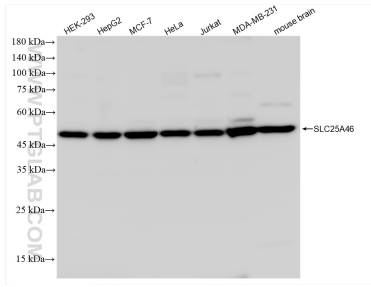
For technical support and original validation data for this product please contact:

T: 1 (888) 4PTGLAB (1-888-478-4522) (toll free
in USA), or 1(312) 455-8498 (outside USA)

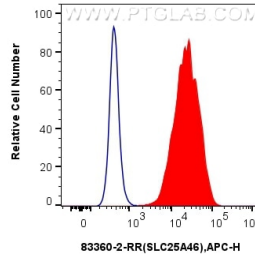
E: proteintech@ptglab.com
W: ptglab.com

This product is exclusively available under Proteintech Group brand and is not available to purchase from any other manufacturer.

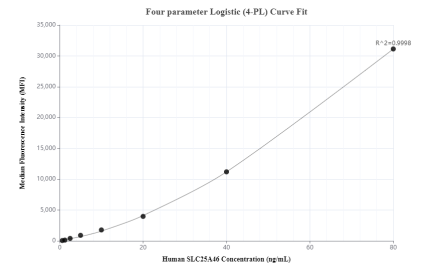
Selected Validation Data



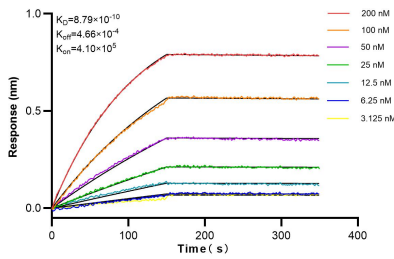
Various lysates were subjected to SDS PAGE followed by western blot with 83360-2-RR (SLC25A46 antibody) at dilution of 1:10000 incubated at room temperature for 1.5 hours. This data was developed using the same antibody clone with 83360-2-PBS in a different storage buffer formulation.



1x10⁶ Caco-2 cells were intracellularly stained with 0.25 ug SLC25A46 Recombinant antibody (83360-2-RR, Clone:240114G3) and APC-Conjugated AffiniPure Goat Anti-Rabbit IgG(H+L) (red), or 0.25 ug Isotype Control (blue). Cells were fixed with 4% PFA and permeabilized with Flow Cytometry Perm Buffer (PF00011-C). This data was developed using the same antibody clone with 83360-2-PBS in a different storage buffer formulation.



Cytometric bead array standard curve of MP00369-1, SLC25A46 Recombinant Matched Antibody Pair, PBS Only. Capture antibody: 83360-2-PBS. Detection antibody: 83360-3-PBS. Standard: Ag27293. Range: 0.625-80ng/mL.



Bi-layer interferometry (BLI) kinetic assays of 83360-2-RR against Human SLC25A46 were performed. The affinity constant is 0.879 nM.