

For Research Use Only

# DUSP6 Recombinant antibody

Catalog Number:83356-5-RR



## Basic Information

<b>Catalog Number:</b> 83356-5-RR	<b>GenBank Accession Number:</b> BC003562	<b>Purification Method:</b> Protein A purification
<b>Size:</b> 100ul , Concentration: 1000 ug/ml by Nanodrop;	<b>GeneID (NCBI):</b> 1848	<b>CloneNo.:</b> 240295C8
<b>Source:</b> Rabbit	<b>UNIPROT ID:</b> Q16828	<b>Recommended Dilutions:</b> WB 1:5000-1:50000
<b>Isotype:</b> IgG	<b>Full Name:</b> dual specificity phosphatase 6	
<b>Immunogen Catalog Number:</b> AG23474	<b>Calculated MW:</b> 42 kDa	
	<b>Observed MW:</b> 42-45 kDa	

## Applications

<b>Tested Applications:</b> WB, ELISA	<b>Positive Controls:</b> WB : A431 cells, A549 cells, HepG2 cells, NIH/3T3 cells, PC-12 cells, mouse heart tissue, rat heart tissue
<b>Species Specificity:</b> human, mouse, rat	

## Background Information

Dual specificity phosphatase 6 (DUSP6) is a member of the family of mitogen-activated protein kinase (MAPK) phosphatases, which dephosphorylate and inactivate MAPK (PMID: 9858808). The MAPK pathway is an important signal transduction system that serves cellular processes, such as proliferation, differentiation, migration, and apoptosis. DUSP6 resides at chromosome location 12q22-23, which is one of the candidate loci for susceptibility to bipolar disorder and which encodes a phosphatase selective for extracellular signal-regulated kinase (ERK) (PMID: 9205128). DUSP6 inactivates extracellular signal-regulated kinase (ERK), and can act in tumor suppressive pathways, whose expression is reduced in several different types of cancer. (PMID: 21680106).

## Storage

**Storage:**  
Store at -20°C. Stable for one year after shipment.  
**Storage Buffer:**  
PBS with 0.02% sodium azide and 50% glycerol pH 7.3.  
Aliquoting is unnecessary for -20°C storage

\*\*\* 20ul sizes contain 0.1% BSA

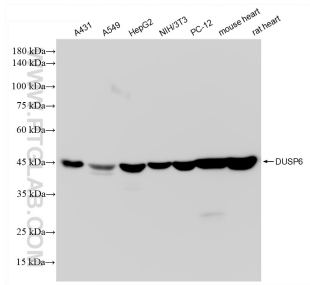
For technical support and original validation data for this product please contact:

T: 1 (888) 4PTGLAB (1-888-478-4522) (toll free  
in USA), or 1(312) 455-8498 (outside USA)

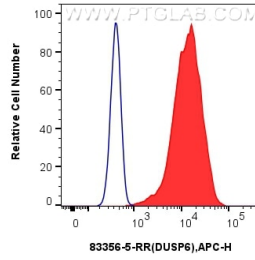
E: proteintech@ptglab.com  
W: ptglab.com

This product is exclusively available under Proteintech Group brand and is not available to purchase from any other manufacturer.

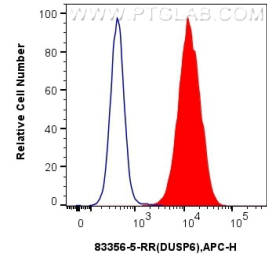
## Selected Validation Data



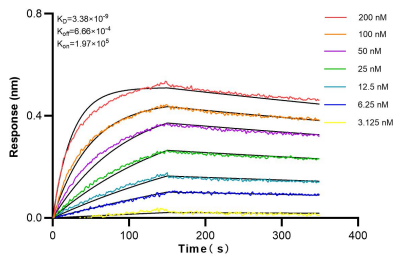
Various lysates were subjected to SDS PAGE followed by western blot with 83356-5-RR (DUSP6 antibody) at dilution of 1:10000 incubated at room temperature for 1.5 hours.



$1 \times 10^6$  HeLa cells were intracellularly stained with 0.25  $\mu$ g DUSP6 Recombinant antibody (83356-5-RR, Clone:240295C8) (red) or Isotype Control (blue) and APC-Conjugated AffiniPure Goat Anti-Rabbit IgG(H+L). Cells were fixed with 4% PFA and permeabilized with Flow Cytometry Perm Buffer (PF00011-C).



$1 \times 10^6$  PC-12 cells were intracellularly stained with 0.25  $\mu$ g DUSP6 Recombinant antibody (83356-5-RR, Clone:240295C8) (red) or Isotype Control (blue) and APC-Conjugated AffiniPure Goat Anti-Rabbit IgG(H+L). Cells were fixed with 4% PFA and permeabilized with Flow Cytometry Perm Buffer (PF00011-C).



Bi-layer interferometry (BLI) kinetic assays of 83356-5-RR against Human DUSP6 were performed. The affinity constant is 3.38 nM.