

For Research Use Only

DUSP6 Recombinant antibody, PBS Only

Catalog Number: 83356-5-PBS



Basic Information

Catalog Number: 83356-5-PBS	GenBank Accession Number: BC003562	Purification Method: Protein A purification
Size: 100ug , Concentration: 1 mg/ml by Nanodrop;	GeneID (NCBI): 1848	CloneNo.: 240295C8
Source: Rabbit	UNIPROT ID: Q16828	
Isotype: IgG	Full Name: dual specificity phosphatase 6	
Immunogen Catalog Number: AG23474	Calculated MW: 42 kDa	
	Observed MW: 42-45 kDa	

Applications

Tested Applications:
WB, ELISA

Species Specificity:
human, mouse, rat

Background Information

Dual specificity phosphatase 6 (DUSP6) is a member of the family of mitogen-activated protein kinase (MAPK) phosphatases, which dephosphorylate and inactivate MAPK (PMID: 9858808). The MAPK pathway is an important signal transduction system that serves cellular processes, such as proliferation, differentiation, migration, and apoptosis. DUSP6 resides at chromosome location 12q22-23, which is one of the candidate loci for susceptibility to bipolar disorder and which encodes a phosphatase selective for extracellular signal-regulated kinase (ERK) (PMID: 9205128). DUSP6 inactivates extracellular signal-regulated kinase (ERK), and can act in tumor suppressive pathways, whose expression is reduced in several different types of cancer. (PMID: 21680106).

Storage

Storage:
Store at -80°C.

Storage Buffer:
PBS Only

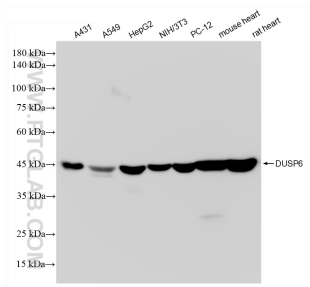
For technical support and original validation data for this product please contact:

T: 1 (888) 4PTGLAB (1-888-478-4522) (toll free in USA), or 1(312) 455-8498 (outside USA)

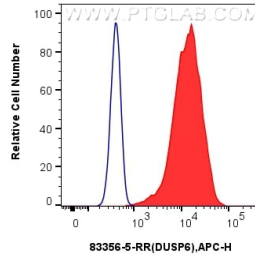
E: proteintech@ptglab.com
W: ptglab.com

This product is exclusively available under Proteintech Group brand and is not available to purchase from any other manufacturer.

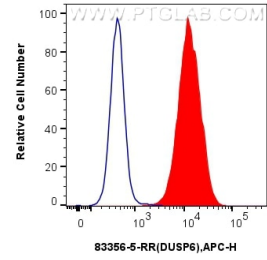
Selected Validation Data



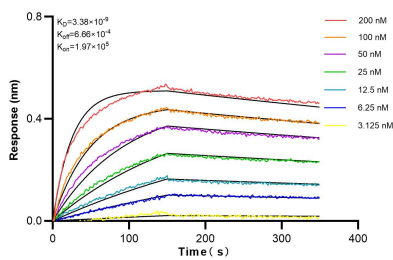
Various lysates were subjected to SDS PAGE followed by western blot with 83356-5-RR (DUSP6 antibody) at dilution of 1:10000 incubated at room temperature for 1.5 hours. This data was developed using the same antibody clone with 83356-5-PBS in a different storage buffer formulation.



1×10^6 HeLa cells were intracellularly stained with 0.25 μ g DUSP6 Recombinant antibody (83356-5-RR, Clone:240295C8) (red) or Isotype Control and (blue) and APC-Conjugated AffiniPure Goat Anti-Rabbit IgG(H+L). Cells were fixed with 4% PFA and permeabilized with Flow Cytometry Perm Buffer (PF00011-C). This data was developed using the same antibody clone with 83356-5-PBS in a different storage buffer formulation.



1×10^6 PC-12 cells were intracellularly stained with 0.25 μ g DUSP6 Recombinant antibody (83356-5-RR, Clone:240295C8) (red) or Isotype Control and (blue) and APC-Conjugated AffiniPure Goat Anti-Rabbit IgG(H+L). Cells were fixed with 4% PFA and permeabilized with Flow Cytometry Perm Buffer (PF00011-C). This data was developed using the same antibody clone with 83356-5-PBS in a different storage buffer formulation.



Bi-layer interferometry (BLI) kinetic assays of 83356-5-RR against Human DUSP6 were performed. The affinity constant is 3.38 nM.