

For Research Use Only

# DUSP6 Recombinant antibody

Catalog Number:83355-3-RR



## Basic Information

<b>Catalog Number:</b> 83355-3-RR	<b>GenBank Accession Number:</b> BC003562	<b>Purification Method:</b> Protein A purification
<b>Size:</b> 100ul , Concentration: 1000 µg/ml by Nanodrop;	<b>GeneID (NCBI):</b> 1848	<b>CloneNo.:</b> 240303A9
<b>Source:</b> Rabbit	<b>UNIPROT ID:</b> Q16828	
<b>Isotype:</b> IgG	<b>Full Name:</b> dual specificity phosphatase 6	
<b>Immunogen Catalog Number:</b> AG0705	<b>Calculated MW:</b> 42 kDa	

## Applications

**Tested Applications:**  
FC (Intra), ELISA

**Species Specificity:**  
human

## Background Information

Dual specificity phosphatase 6 (DUSP6) is a member of the family of mitogen-activated protein kinase (MAPK) phosphatases, which dephosphorylate and inactivate MAPK (PMID: 9858808). The MAPK pathway is an important signal transduction system that serves cellular processes, such as proliferation, differentiation, migration, and apoptosis. DUSP6 resides at chromosome location 12q22-23, which is one of the candidate loci for susceptibility to bipolar disorder and which encodes a phosphatase selective for extracellular signal-regulated kinase (ERK) (PMID: 9205128). DUSP6 inactivates extracellular signal-regulated kinase (ERK), and can act in tumor suppressive pathways, whose expression is reduced in several different types of cancer. (PMID: 21680106).

## Storage

**Storage:**  
Store at -20°C. Stable for one year after shipment.

**Storage Buffer:**  
PBS with 0.02% sodium azide and 50% glycerol pH 7.3.

Aliquoting is unnecessary for -20°C storage

\*\*\* 20ul sizes contain 0.1% BSA

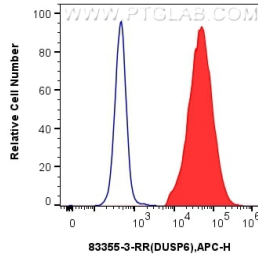
For technical support and original validation data for this product please contact:

T: 1 (888) 4PTGLAB (1-888-478-4522) (toll free in USA), or 1(312) 455-8498 (outside USA)

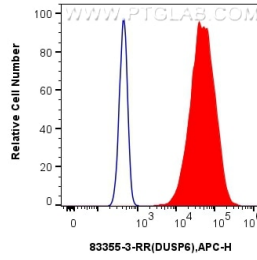
E: [proteintech@ptglab.com](mailto:proteintech@ptglab.com)  
W: [ptglab.com](http://ptglab.com)

This product is exclusively available under Proteintech Group brand and is not available to purchase from any other manufacturer.

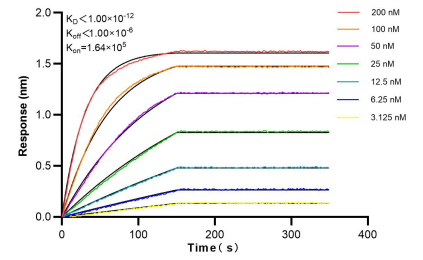
## Selected Validation Data



1x10<sup>6</sup> PC-12 cells were intracellularly stained with 0.25 ug Dusp6 Recombinant Antibody (83355-3-RR, Clone:240303A9) (red) or Isotype Control (blue) and APC-Conjugated AffiniPure Goat Anti-Rabbit IgG(H+L). Cells were fixed with 4% PFA and permeabilized with Flow Cytometry Perm Buffer (PF00011-C).



1x10<sup>6</sup> HeLa cells were intracellularly stained with 0.25 ug Dusp6 Recombinant Antibody (83355-3-RR, Clone:240303A9) (red) or Isotype Control (blue) and APC-Conjugated AffiniPure Goat Anti-Rabbit IgG(H+L). Cells were fixed with 4% PFA and permeabilized with Flow Cytometry Perm Buffer (PF00011-C).



Biacore BLI kinetic assays of 83355-3-RR against Human DUSP6 were performed. The affinity constant is below 1 pM.