

For Research Use Only

# DUSP6 Recombinant antibody, PBS Only (Capture)

Catalog Number: 83355-3-PBS



## Basic Information

<b>Catalog Number:</b> 83355-3-PBS	<b>GenBank Accession Number:</b> BC003562	<b>Purification Method:</b> Protein A purification
<b>Size:</b> 100ug, Concentration: 1 mg/ml by Nanodrop;	<b>GeneID (NCBI):</b> 1848	<b>CloneNo.:</b> 240303A9
<b>Source:</b> Rabbit	<b>UNIPROT ID:</b> Q16828	
<b>Isotype:</b> IgG	<b>Full Name:</b> dual specificity phosphatase 6	
<b>Immunogen Catalog Number:</b> AG0705	<b>Calculated MW:</b> 42 kDa	

## Applications

**Tested Applications:**  
FC (Intra), Cytometric bead array, Indirect ELISA

**Species Specificity:**  
human

## Product Information

83355-3-PBS targets DUSP6 as part of a matched antibody pair:

MP00391-2: 83355-3-PBS capture and 83355-4-PBS detection (validated in Cytometric bead array)

Unconjugated rabbit recombinant monoclonal antibody in PBS only (BSA and azide free) storage buffer at a concentration of 1 mg/mL, ready for conjugation. Created using Proteintech's proprietary in-house recombinant technology. Recombinant production enables unrivalled batch-to-batch consistency, easy scale-up, and future security of supply.

This conjugation ready format makes antibodies ideal for use in many applications including: ELISAs, multiplex assays requiring matched pairs, mass cytometry, and multiplex imaging applications. Antibody use should be optimized by the end user for each application and assay.

## Background Information

Dual specificity phosphatase 6 (DUSP6) is a member of the family of mitogen-activated protein kinase (MAPK) phosphatases, which dephosphorylate and inactivate MAPK (PMID: 9858808). The MAPK pathway is an important signal transduction system that serves cellular processes, such as proliferation, differentiation, migration, and apoptosis. DUSP6 resides at chromosome location 12q22-23, which is one of the candidate loci for susceptibility to bipolar disorder and which encodes a phosphatase selective for extracellular signal-regulated kinase (ERK) (PMID: 9205128). DUSP6 inactivates extracellular signal-regulated kinase (ERK), and can act in tumor suppressive pathways, whose expression is reduced in several different types of cancer. (PMID: 21680106).

## Storage

**Storage:**  
Store at -80°C.  
**Storage Buffer:**  
PBS Only

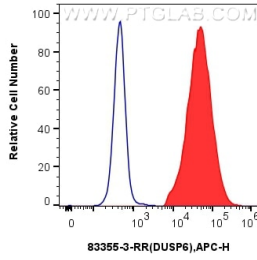
For technical support and original validation data for this product please contact:

T: 1 (888) 4PTGLAB (1-888-478-4522) (toll free  
in USA), or 1(312) 455-8498 (outside USA)

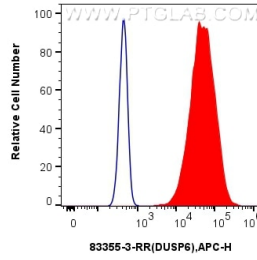
E: [proteintech@ptglab.com](mailto:proteintech@ptglab.com)  
W: [ptglab.com](http://ptglab.com)

**This product is exclusively available under Proteintech Group brand and is not available to purchase from any other manufacturer.**

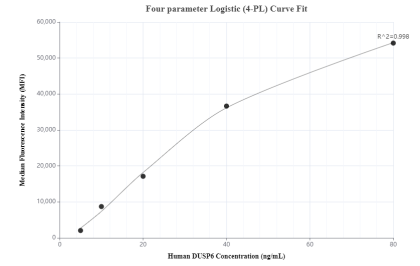
## Selected Validation Data



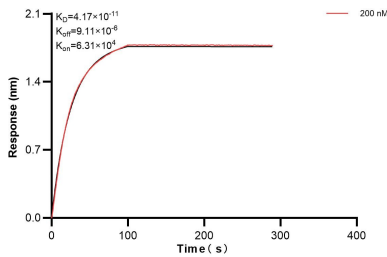
1x10<sup>6</sup> PC-12 cells were intracellularly stained with 0.25 ug Dusp6 Recombinant Antibody (83355-3-RR, Clone:240303A9) (red) or Isotype Control (blue) and APC-Conjugated AffiniPure Goat Anti-Rabbit IgG(H+L). Cells were fixed with 4% PFA and permeabilized with Flow Cytometry Perm Buffer (PF00011-C). This data was developed using the same antibody clone with 83355-3-PBS in a different storage buffer formulation.



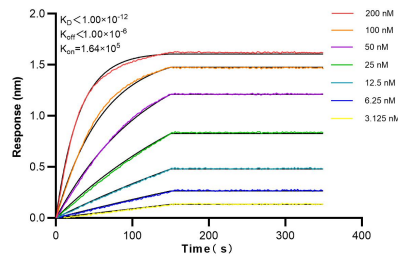
1x10<sup>6</sup> HeLa cells were intracellularly stained with 0.25 ug Dusp6 Recombinant Antibody (83355-3-RR, Clone:240303A9) (red) or Isotype Control (blue) and APC-Conjugated AffiniPure Goat Anti-Rabbit IgG(H+L). Cells were fixed with 4% PFA and permeabilized with Flow Cytometry Perm Buffer (PF00011-C). This data was developed using the same antibody clone with 83355-3-PBS in a different storage buffer formulation.



Cytometric bead array standard curve of MP00391-2, DUSP6 Recombinant Matched Antibody Pair, PBS Only. Capture antibody: 83355-3-PBS. Detection antibody: 83355-4-PBS. Standard: Ag0705. Range: 5-80ng/mL.



Bi-layer interferometry (BLI) kinetic assay of 83355-3-PBS against Human DUSP6 was performed. The affinity constant is 41.7 pM.



Bi-layer interferometry (BLI) kinetic assays of 83355-3-RR against Human DUSP6 were performed. The affinity constant is below 1 pM.