

For Research Use Only

FGR Recombinant antibody

Catalog Number:83352-1-RR



Basic Information

Catalog Number: 83352-1-RR	GenBank Accession Number: NM_005248	Purification Method: Protein A purification
Size: 100ul , Concentration: 1000 ug/ml by Nanodrop;	GeneID (NCBI): 2268	CloneNo.: 240275E5
Source: Rabbit	UNIPROT ID: P09769	Recommended Dilutions: WB 1:5000-1:50000 IF/ICC 1:125-1:500
Isotype: IgG	Full Name: Gardner-Rasheed feline sarcoma viral (v-fgr) oncogene homolog	
Immunogen Catalog Number: AG34944	Calculated MW: 59 kDa	
	Observed MW: 60 kDa	

Applications

Tested Applications: WB, IF/ICC, ELISA	Positive Controls: WB : Daudi cells, Raji cells
Species Specificity: human	IF/ICC : Raji cells,

Background Information

FGR (Tyrosine-protein kinase Fgr) is a member of the Src family of protein tyrosine kinases (PTKs). It's contains N-terminal sites for myristylation and palmitoylation, a PTK domain, and SH2 and SH3 domains which are involved in mediating protein-protein interactions with phosphotyrosine-containing and proline-rich motifs, respectively.

Storage

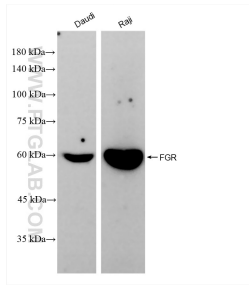
Storage:
Store at -20°C. Stable for one year after shipment.
Storage Buffer:
PBS with 0.02% sodium azide and 50% glycerol pH 7.3.
Aliquoting is unnecessary for -20°C storage

*** 20ul sizes contain 0.1% BSA

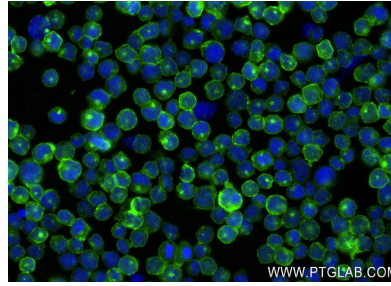
For technical support and original validation data for this product please contact:
T: 1 (888) 4PTGLAB (1-888-478-4522) (toll free in USA), or 1(312) 455-8498 (outside USA)
E: proteintech@ptglab.com
W: ptglab.com

This product is exclusively available under Proteintech Group brand and is not available to purchase from any other manufacturer.

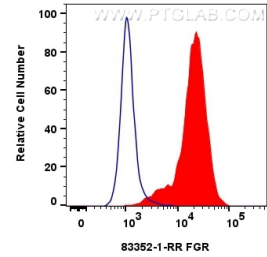
Selected Validation Data



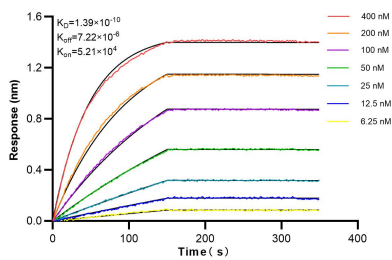
Various lysates were subjected to SDS PAGE followed by western blot with 83352-1-RR (FGR antibody) at dilution of 1:10000 incubated at room temperature for 1.5 hours.



Immunofluorescent analysis of (4% PFA) fixed Raji cells using FGR antibody (83352-1-RR, Clone: 240275E5) at dilution of 1:250 and CoraLite®488-Conjugated AffiniPure Goat Anti-Rabbit IgG(H+L) (SA00013-2).



1×10^6 Raji cells were intracellularly stained with 0.25 ug FGR Recombinant antibody (83352-1-RR, Clone:240275E5) and CoraLite®488-Conjugated Goat Anti-Rabbit IgG(H+L) (SA00013-2)(red), or 0.25 ug Rabbit IgG Isotype Control Recombinant Antibody (98136-1-RR, Clone: 240953C9) (blue). Cells were fixed with 4% PFA and permeabilized with Flow Cytometry Perm Buffer (PF00011-C).



Bi-layer interferometry (BLI) kinetic assays of 83352-1-RR against Human FGR were performed. The affinity constant is 0.139 nM.