

For Research Use Only

Bcl-XL Recombinant antibody, PBS Only (Capture)

Catalog Number: 83330-4-PBS



Basic Information

Catalog Number: 83330-4-PBS	GenBank Accession Number: BC019307	Purification Method: Protein A purification
Size: 100ug, Concentration: 1 mg/ml by Nanodrop;	GeneID (NCBI): 598	CloneNo.: 240450B1
Source: Rabbit	UNIPROT ID: Q07817	
Isotype: IgG	Full Name: BCL2-like 1	
Immunogen Catalog Number: AG25604	Calculated MW: 26 kDa	

Applications

Tested Applications:
Cytometric bead array, Sandwich ELISA, Indirect ELISA, Sample test

Species Specificity:
human

Product Information

83330-4-PBS targets Bcl-XL as part of a matched antibody pair:

MP00460-2: 83330-4-PBS capture and 83330-5-PBS detection (validated in Cytometric bead array)

MP00460-3: 83330-4-PBS capture and 83330-3-PBS detection (validated in Sandwich ELISA)

Unconjugated rabbit recombinant monoclonal antibody in PBS only (BSA and azide free) storage buffer at a concentration of 1 mg/mL, ready for conjugation. Created using Proteintech's proprietary in-house recombinant technology. Recombinant production enables unrivalled batch-to-batch consistency, easy scale-up, and future security of supply.

This conjugation ready format makes antibodies ideal for use in many applications including: ELISAs, multiplex assays requiring matched pairs, mass cytometry, and multiplex imaging applications. Antibody use should be optimized by the end user for each application and assay.

Storage

Storage:
Store at -80°C.
Storage Buffer:
PBS Only

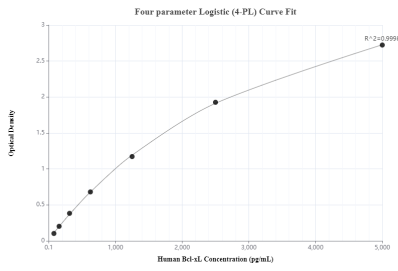
For technical support and original validation data for this product please contact:

T: 1 (888) 4PTGLAB (1-888-478-4522) (toll free in USA), or 1(312) 455-8498 (outside USA)

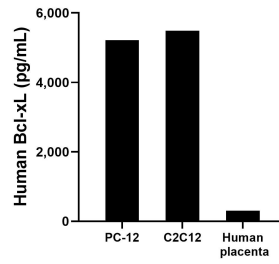
E: proteintech@ptglab.com
W: ptglab.com

This product is exclusively available under Proteintech Group brand and is not available to purchase from any other manufacturer.

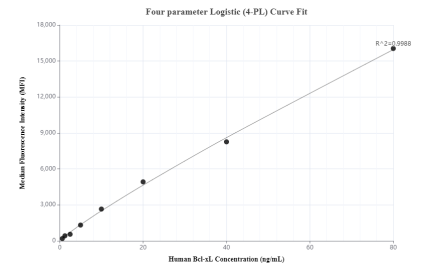
Selected Validation Data



Sandwich ELISA standard curve of MP00460-3, Human Bcl-xL Monoclonal Matched Antibody Pair - PBS only. 83330-4-PBS was coated to a plate as the capture antibody and incubated with serial dilutions of standard Ag25604. 83330-3-PBS was HRP conjugated as the detection antibody. Range: 78.125-5000 pg/mL



The mean Bcl-xL concentration was determined to be 5217.7 pg/mL in PC-12 cell extract. The mean Bcl-xL concentration was determined to be 5,486.2 pg/mL in C2C12 cell extract based on a 3.6 mg/mL extract load. The mean Bcl-xL concentration was determined to be 303.5 pg/mL in human placenta cell extract based on a 1.8 mg/mL extract load.



Cytometric bead array standard curve of MP00460-2, Bcl-xL Recombinant Matched Antibody Pair, PBS Only. Capture antibody: 83330-4-PBS. Detection antibody: 83330-5-PBS. Standard: Ag25604. Range: 0.625-80 ng/mL