

For Research Use Only

Bcl-XL Recombinant antibody

Catalog Number:83330-1-RR



Basic Information

Catalog Number: 83330-1-RR	GenBank Accession Number: BC019307	Purification Method: Protein A purification
Size: 100ul , Concentration: 1000 ug/ml by Nanodrop;	GeneID (NCBI): 598	CloneNo.: 1E8
Source: Rabbit	UNIPROT ID: Q07817	Recommended Dilutions: WB 1:5000-1:50000 IF/ICC 1:125-1:500
Isotype: IgG	Full Name: BCL2-like 1	
Immunogen Catalog Number: AG25604	Calculated MW: 26 kDa	
	Observed MW: 30 kDa	

Applications

Tested Applications:
WB, IF/ICC, FC (Intra), ELISA

Species Specificity:
Human, mouse, rat

Positive Controls:
WB : A549 cells, HeLa cells, Ramos cells, K-562 cells, RAW 264.7 cells, C6 cells, Jurkat cells

IF/ICC : HeLa cells,

Background Information

BCL2L1 is a member of the BCL-2 protein family. BCL2L1 is expressed as three isoforms, Bcl-X(L), Bcl-X(s), and Bcl-X(beta), and is located at the outer mitochondrial membrane. The Bcl-X(L) isoform is a 233 amino acid protein, acting as an apoptotic inhibitor. Bcl-XL can form heterodimers with BAX, BAK or BCL2, and the heterodimerization with BAX does not seem to be required for anti-apoptotic activity. The Bcl-X(s) isoform is a shorter variant that is 178 amino acids in length and lacks a 63 amino acid region (amino acids 126-188), acting as an apoptotic activator. Bcl-X(beta) is a 227 amino acid protein.

Storage

Storage:
Store at -20°C. Stable for one year after shipment.

Storage Buffer:
PBS with 0.02% sodium azide and 50% glycerol pH 7.3.

Aliquoting is unnecessary for -20°C storage

*** 20ul sizes contain 0.1% BSA

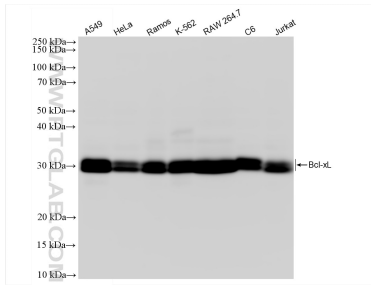
For technical support and original validation data for this product please contact:

T: 1 (888) 4PTGLAB (1-888-478-4522) (toll free in USA), or 1(312) 455-8498 (outside USA)

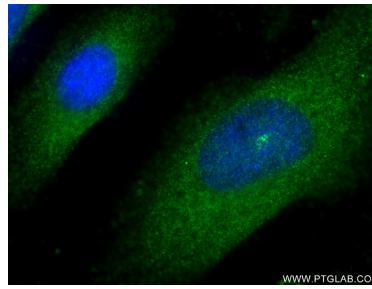
E: proteintech@ptglab.com
W: ptglab.com

This product is exclusively available under Proteintech Group brand and is not available to purchase from any other manufacturer.

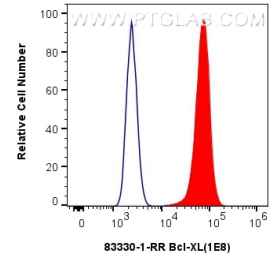
Selected Validation Data



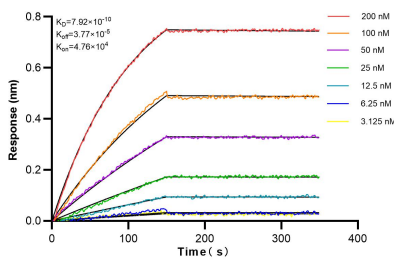
Various lysates were subjected to SDS PAGE followed by western blot with 83330-1-RR (Bcl-xL antibody) at dilution of 1:10000 incubated at room temperature for 1.5 hours.



Immunofluorescent analysis of (-20°C Ethanol) fixed HeLa cells using Bcl-XL antibody (83330-1-RR, Clone: 1E8) at dilution of 1:250 and CoraLite®488-Conjugated AffiniPure Goat Anti-Rabbit IgG(H+L) (SA00013-2).



1x10⁶ HeLa cells were intracellularly stained with 0.25 ug Bcl-XL Recombinant antibody (83330-1-RR, Clone:1E8) and CoraLite®488-Conjugated AffiniPure Goat Anti-Rabbit IgG(H+L) (SA00013-2) (red), or 0.25 ug Isotype Control (blue). Cells were fixed with 4% PFA and permeabilized with Flow Cytometry Perm Buffer (PF00011-C).



Bi-layer interferometry (BLI) kinetic assays of 83330-1-RR against Human Bcl-XL were performed. The affinity constant is 0.792 nM.