

For Research Use Only

# VPS35 Recombinant antibody

Catalog Number: 83328-2-RR



## Basic Information

### Catalog Number:

83328-2-RR

### Size:

100ul, Concentration: 1000 µg/ml by Nanodrop;

### Source:

Rabbit

### Isotype:

IgG

### Immunogen Catalog Number:

AG0333

### GenBank Accession Number:

BC002414

### GeneID (NCBI):

55737

### UNIPROT ID:

Q96QK1

### Full Name:

vacuolar protein sorting 35 homolog (S. cerevisiae)

### Calculated MW:

92 kDa

### Observed MW:

80-92 kDa

### Purification Method:

Protein A purification

### CloneNo.:

250521F1

### Recommended Dilutions:

WB: 1:5000-1:50000

## Applications

### Tested Applications:

WB, ELISA

### Species Specificity:

human, mouse, rat

### Positive Controls:

WB: A549 cells, HepG2 cells, Raji cells, HEK-293 cells, NIH/3T3 cells, mouse kidney tissue, rat kidney tissue

## Background Information

VPS35 protein belongs to a group of vacuolar protein sorting (VPS) proteins, which ensure the proper delivery of organelle-specific proteins in eukaryotic cells. VPS35 is the core of a multimeric complex, termed the retromer complex, which is involved in retrograde transport of proteins from endosomes to the trans-Golgi network. Vps35 serves as the core of the multimeric complex by binding directly to Vps26 and Vps29 and SNX1. Northern blot analyses in 16 tissues showed that one transcript of Vps35 with a size of 3.6 kb was highly expressed in brain, heart, testis, ovary, small intestine, spleen, skeletal muscle, and placenta and expressed at moderate or low levels in other tissues. Another transcript of Vps35, a message of 3.0 kb, was also expressed with proportionally lower levels than the 3.6-kb transcript in all the tissues except that the 3.0-kb transcript was not detected in brain. Human Vps35 is mapped at 16q13-q21.

## Storage

### Storage:

Store at -20°C. Stable for one year after shipment.

### Storage Buffer:

PBS with 0.02% sodium azide and 50% glycerol, pH7.3

Aliquoting is unnecessary for -20°C storage

\*\*\* 20ul sizes contain 0.1% BSA

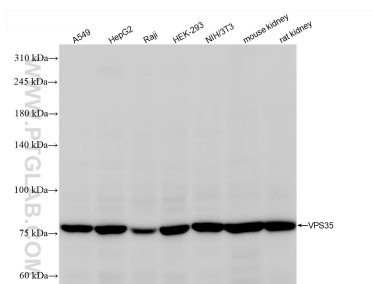
For technical support and original validation data for this product please contact:

T: 1 (888) 4PTGLAB (1-888-478-4522) (toll free in USA), or 1(312) 455-8498 (outside USA)

E: proteintech@ptglab.com  
W: ptglab.com

This product is exclusively available under Proteintech Group brand and is not available to purchase from any other manufacturer.

## Selected Validation Data



Various lysates were subjected to SDS PAGE followed by western blot with 83328-2-RR (VPS35 antibody) at dilution of 1:10000 incubated at room temperature for 1.5 hours.