

For Research Use Only

VPS35 Recombinant antibody, PBS Only

Catalog Number: 83328-2-PBS



Basic Information

Catalog Number: 83328-2-PBS	GenBank Accession Number: BC002414	Purification Method: Protein A purification
Size: 100ug, Concentration: 1 mg/ml by Nanodrop;	GeneID (NCBI): 55737	CloneNo.: 250521F1
Source: Rabbit	UNIPROT ID: Q96QK1	
Isotype: IgG	Full Name: vacuolar protein sorting 35 homolog (S. cerevisiae)	
Immunogen Catalog Number: AG0333	Calculated MW: 92 kDa	
	Observed MW: 80-92 kDa	

Applications

Tested Applications:
WB, Indirect ELISA

Species Specificity:
human, mouse, rat

Background Information

VPS35 protein belongs to a group of vacuolar protein sorting (VPS) proteins, which ensure the proper delivery of organelle-specific proteins in eukaryotic cells. VPS35 is the core of a multimeric complex, termed the retromer complex, which is involved in retrograde transport of proteins from endosomes to the trans-Golgi network. Vps35 serves as the core of the multimeric complex by binding directly to Vps26 and Vps29 and SNX1. Northern blot analyses in 16 tissues showed that one transcript of Vps35 with a size of 3.6 kb was highly expressed in brain, heart, testis, ovary, small intestine, spleen, skeletal muscle, and placenta and expressed at moderate or low levels in other tissues. Another transcript of Vps35, a message of 3.0 kb, was also expressed with proportionally lower levels than the 3.6-kb transcript in all the tissues except that the 3.0-kb transcript was not detected in brain. Human Vps35 is mapped at 16q13-q21.

Storage

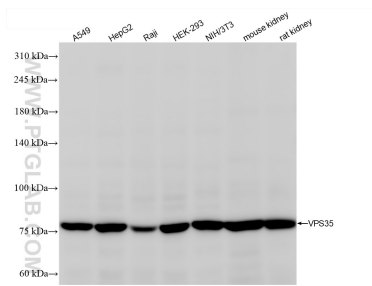
Storage:
Store at -80°C.

Storage Buffer:
PBS only, pH7.3

For technical support and original validation data for this product please contact:
T: 1 (888) 4PTGLAB (1-888-478-4522) (toll free in USA), or 1(312) 455-8498 (outside USA)
E: proteintech@ptglab.com
W: ptglab.com

This product is exclusively available under Proteintech Group brand and is not available to purchase from any other manufacturer.

Selected Validation Data



Various lysates were subjected to SDS PAGE followed by western blot with 83328-2-RR (VPS35 antibody) at dilution of 1:10000 incubated at room temperature for 1.5 hours. This data was developed using the same antibody clone with 83328-2-PBS in a different storage buffer formulation.