

For Research Use Only

NRG1, isoform SMDF Recombinant antibody

Catalog Number:83323-6-RR



Basic Information

Catalog Number: 83323-6-RR	GenBank Accession Number: BC007675	Purification Method: Protein A purification
Size: 100ul , Concentration: 300 ug/ml by Nanodrop;	GeneID (NCBI): 3084	CloneNo.: 240184G2
Source: Rabbit	UNIPROT ID: Q02297	Recommended Dilutions: IHC 1:50-1:500 IF-P 1:125-1:500 IF/ICC 1:50-1:500
Isotype: IgG	Full Name: neuregulin 1	
Immunogen Catalog Number: AG0803	Calculated MW: 70 kDa	
	Observed MW: 70 kDa	

Applications

Tested Applications:
IHC, IF/ICC, IF-P, ELISA

Species Specificity:
human, mouse, rat

Note-IHC: suggested antigen retrieval with TE buffer pH 9.0; (*) Alternatively, antigen retrieval may be performed with citrate buffer pH 6.0

Positive Controls:

IHC : mouse cerebellum tissue, mouse stomach tissue

IF-P : rat brain tissue,

IF/ICC : MCF-7 cells,

Background Information

Neuregulin 1 (NRG1) is a trophic factor that has been implicated in neural development, neurotransmission, and synaptic plasticity. NRG1 has multiple isoforms that are generated by usage of different promoters and alternative splicing of a single gene. NRG1 and its receptor ErbB tyrosine kinase are expressed not only in the developing nervous system, but also in the adult brain. The immunogen of this antibody is against NRG1 isoform SMDF.

Storage

Storage:

Store at -20°C. Stable for one year after shipment.

Storage Buffer:

PBS with 0.02% sodium azide and 50% glycerol pH 7.3.

Aliquoting is unnecessary for -20°C storage

*** 20ul sizes contain 0.1% BSA

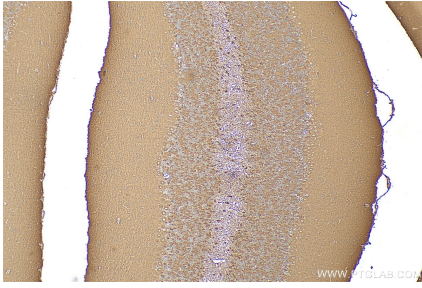
For technical support and original validation data for this product please contact:

T: 1 (888) 4PTGLAB (1-888-478-4522) (toll free in USA), or 1(312) 455-8498 (outside USA)

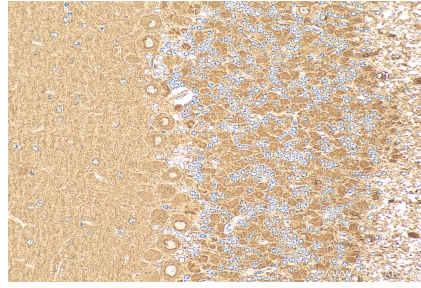
E: proteintech@ptglab.com
W: ptglab.com

This product is exclusively available under Proteintech Group brand and is not available to purchase from any other manufacturer.

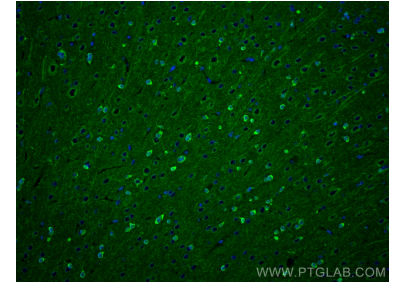
Selected Validation Data



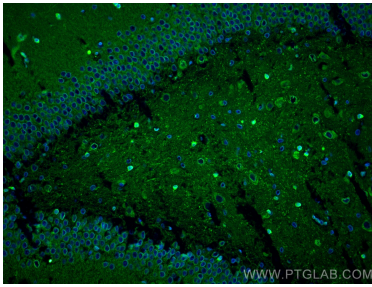
Immunohistochemical analysis of paraffin-embedded mouse cerebellum tissue slide using 83323-6-RR (NRG1, isoform SMDF antibody) at dilution of 1:200 (under 10x lens). Heat mediated antigen retrieval with Tris-EDTA buffer (pH 9.0).



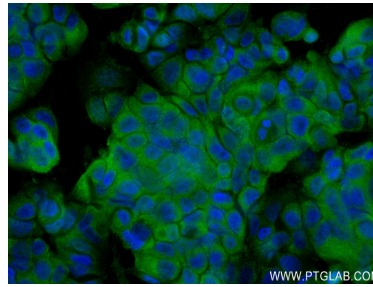
Immunohistochemical analysis of paraffin-embedded mouse cerebellum tissue slide using 83323-6-RR (NRG1, isoform SMDF antibody) at dilution of 1:200 (under 40x lens). Heat mediated antigen retrieval with Tris-EDTA buffer (pH 9.0).



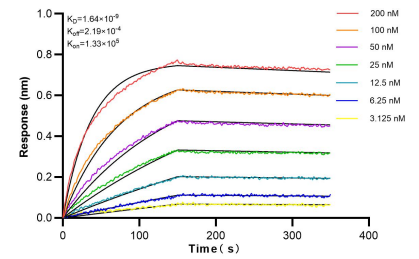
Immunofluorescent analysis of (4% PFA) fixed paraffin-embedded rat brain tissue using NRG1, isoform SMDF antibody (83323-6-RR, Clone: 240184G2) at dilution of 1:250 and Multi-rAb CoraLite® Plus 488-Goat Anti-Rabbit Recombinant Secondary Antibody (H+L) (RGAR002). Heat mediated antigen retrieval with Tris-EDTA buffer (pH 9.0).



Immunofluorescent analysis of (4% PFA) fixed paraffin-embedded rat brain tissue using NRG1, isoform SMDF antibody (83323-6-RR, Clone: 240184G2) at dilution of 1:250 and Multi-rAb CoraLite® Plus 488-Goat Anti-Rabbit Recombinant Secondary Antibody (H+L) (RGAR002). Heat mediated antigen retrieval with Tris-EDTA buffer (pH 9.0).



Immunofluorescent analysis of (4% PFA) fixed MCF-7 cells using NRG1, isoform SMDF antibody (83323-6-RR, Clone: 240184G2) at dilution of 1:100 and CoraLite® 488-Conjugated AffiniPure Goat Anti-Mouse IgG(H+L) (SA00013-1).



Bi-layer interferometry (BLI) kinetic assays of 83323-6-RR against Human NRG1, isoform SMDF were performed. The affinity constant is 1.64 nM.