

For Research Use Only

# SAT1 Recombinant antibody, PBS Only (Capture/Detector)

Catalog Number:83319-3-PBS



## Basic Information

<b>Catalog Number:</b> 83319-3-PBS	<b>GenBank Accession Number:</b> BC008424	<b>Purification Method:</b> Protein A purification
<b>Size:</b> 100ug , Concentration: 1 mg/ml by Nanodrop;	<b>GeneID (NCBI):</b> 6303	<b>CloneNo.:</b> 240157C6
<b>Source:</b> Rabbit	<b>UNIPROT ID:</b> P21673	
<b>Isotype:</b> IgG	<b>Full Name:</b> spermidine/spermine N1- acetyltransferase 1	
<b>Immunogen Catalog Number:</b> AG1154	<b>Calculated MW:</b> 20 kDa	

## Applications

**Tested Applications:**  
Cytometric bead array, Sandwich ELISA, Indirect ELISA,  
Sample test

**Species Specificity:**  
human

## Product Information

83319-3-PBS targets SAT1 as part of a matched antibody pair:

MP00344-1: 83319-3-PBS capture and 83319-2-PBS detection (validated in Cytometric bead array)

MP00344-2: 83319-3-PBS capture and 83319-1-PBS detection (validated in Cytometric bead array)

MP00344-4: 83319-1-PBS capture and 83319-3-PBS detection (validated in Sandwich ELISA)

Unconjugated rabbit recombinant monoclonal antibody in PBS only (BSA and azide free) storage buffer at a concentration of 1 mg/mL, ready for conjugation. Created using Proteintech's proprietary in-house recombinant technology. Recombinant production enables unrivalled batch-to-batch consistency, easy scale-up, and future security of supply.

This conjugation ready format makes antibodies ideal for use in many applications including: ELISAs, multiplex assays requiring matched pairs, mass cytometry, and multiplex imaging applications. Antibody use should be optimized by the end user for each application and assay.

## Storage

**Storage:**  
Store at -80°C.  
**Storage Buffer:**  
PBS Only

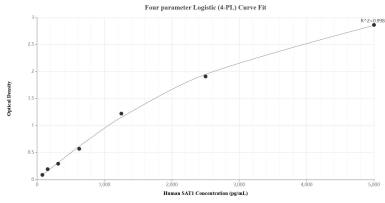
For technical support and original validation data for this product please contact:

T: 1 (888) 4PTGLAB (1-888-478-4522) (toll free  
in USA), or 1(312) 455-8498 (outside USA)

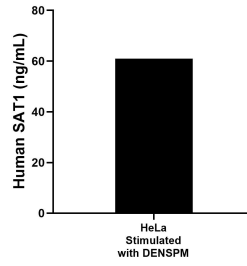
E: [proteintech@ptglab.com](mailto:proteintech@ptglab.com)  
W: [ptglab.com](http://ptglab.com)

**This product is exclusively available under Proteintech Group brand and is not available to purchase from any other manufacturer.**

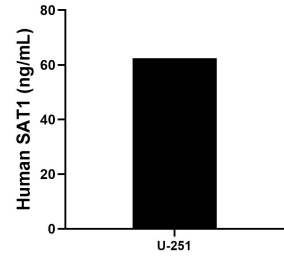
## Selected Validation Data



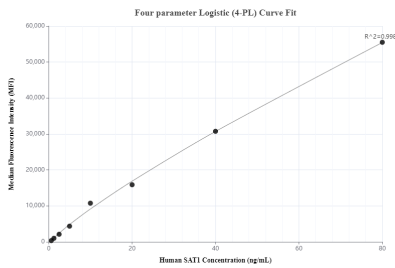
Sandwich ELISA standard curve of MP00344-4, Human SAT1 Recombinant Matched Antibody Pair - PBS only. 83319-1-PBS was coated to a plate as the capture antibody and incubated with serial dilutions of standard Ag1154. 83319-3-PBS was HRP conjugated as the detection antibody. Range: 78.1-5000 pg/mL



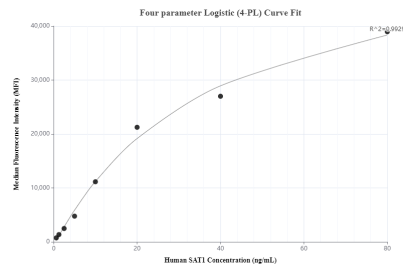
The mean SAT1 concentration was determined to be 60.9 ng/mL in DENSPM-stimulated HeLa cell extracts based on a 3.0 mg/mL extract load.



The mean SAT1 concentration was determined to be 62.4 ng/mL in U-251 cell extract based on a 1.4 mg/mL extract load.



Cytometric bead array standard curve of MP00344-1, SAT1 Recombinant Matched Antibody Pair, PBS Only. Capture antibody: 83319-3-PBS. Detection antibody: 83319-2-PBS. Standard: Ag1154. Range: 0.625-80 ng/mL



Cytometric bead array standard curve of MP00344-2, SAT1 Recombinant Matched Antibody Pair, PBS Only. Capture antibody: 83319-3-PBS. Detection antibody: 83319-1-PBS. Standard: Ag1154. Range: 0.625-80 ng/mL