

For Research Use Only

SAT1 Recombinant antibody

Catalog Number:83319-1-RR



Basic Information

Catalog Number: 83319-1-RR	GenBank Accession Number: BC008424	Purification Method: Protein A purification
Size: 100ul , Concentration: 1000 ug/ml by Nanodrop;	GeneID (NCBI): 6303	CloneNo.: 240157G2
Source: Rabbit	UNIPROT ID: P21673	Recommended Dilutions: WB 1:1000-1:6000 IHC 1:200-1:800 IF/ICC 1:50-1:500
Isotype: IgG	Full Name: spermidine/spermine N1-acetyltransferase 1	
Immunogen Catalog Number: AG1154	Calculated MW: 20 kDa	
	Observed MW: 15-25 kDa	

Applications

Tested Applications: WB, IHC, IF/ICC, FC (Intra), ELISA	Positive Controls: WB : HEK-293 cells, K-562 cells, HeLa cells
Species Specificity: human, mouse	IHC : mouse brain tissue,
Note-IHC: suggested antigen retrieval with TE buffer pH 9.0; (*) Alternatively, antigen retrieval may be performed with citrate buffer pH 6.0	IF/ICC : RAW 264.7 cells,

Background Information

Spermidine/spermine N1-acetyltransferase 1 (SAT1 or SSAT1) is the key regulatory enzyme in the catabolism of polyamines, catalyzing acetylation of spermidine or spermine to generate N1-acetyl spermidine or N1-acetyl spermine, and N1, N12-diacetylspermine. The cellular level of SAT1 is normally extremely low, but it is induced rapidly by a variety of stimuli, including polyamines, polyamine analogs, toxic chemicals, certain drugs, and growth factors. Downregulation of SAT1 has been reported in Epstein-Barr virus positive Burkitt's lymphoma cells.

Storage

Storage:
Store at -20°C. Stable for one year after shipment.
Storage Buffer:
PBS with 0.02% sodium azide and 50% glycerol pH 7.3.
Aliquoting is unnecessary for -20°C storage

*** 20ul sizes contain 0.1% BSA

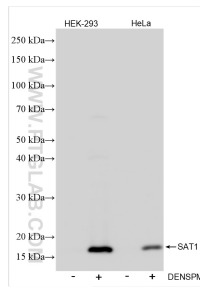
For technical support and original validation data for this product please contact:

T: 1 (888) 4PTGLAB (1-888-478-4522) (toll free in USA), or 1(312) 455-8498 (outside USA)

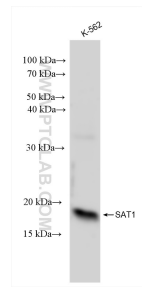
E: proteintech@ptglab.com
W: ptglab.com

This product is exclusively available under Proteintech Group brand and is not available to purchase from any other manufacturer.

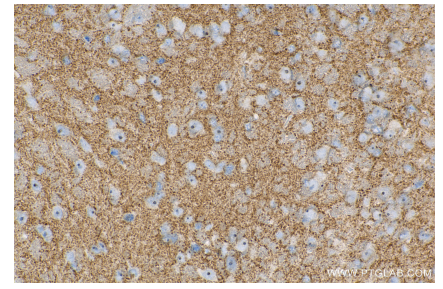
Selected Validation Data



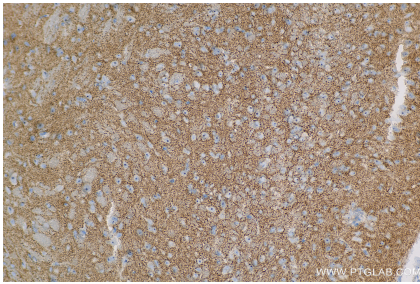
Untreated and DENS PM treated HEK-293 and HeLa cells were subjected to SDS PAGE followed by western blot with 83319-1-RR (SAT1 antibody) at dilution of 1:3000 incubated at room temperature for 1.5 hours.



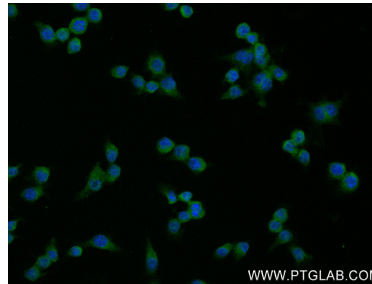
Various lysates were subjected to SDS PAGE followed by western blot with 83319-1-RR (SAT1 antibody) at dilution of 1:10000 incubated at room temperature for 1.5 hours.



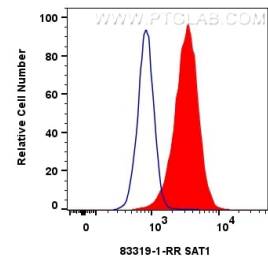
Immunohistochemical analysis of paraffin-embedded mouse brain tissue slide using 83319-1-RR (SAT1 antibody) at dilution of 1:400 (under 40x lens). Heat mediated antigen retrieval with Tris-EDTA buffer (pH 9.0).



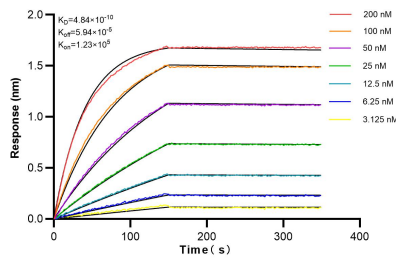
Immunohistochemical analysis of paraffin-embedded mouse brain tissue slide using 83319-1-RR (SAT1 antibody) at dilution of 1:400 (under 20x lens). Heat mediated antigen retrieval with Tris-EDTA buffer (pH 9.0).



Immunofluorescent analysis of (4% PFA) fixed RAW 264.7 cells using SAT1 antibody (83319-1-RR, Clone: 240157G2) at dilution of 1:200 and CoraLite®488-Conjugated AffiniPure Goat Anti-Rabbit IgG(H+L) (SA00013-2).



1×10^6 RAW 264.7 cells were intracellularly stained with 0.25 μ g SAT1 Recombinant antibody (83319-1-RR, Clone:240157G2) and CoraLite®488-Conjugated Goat Anti-Rabbit IgG(H+L) (SA00013-2) (red), or 0.25 μ g Rabbit IgG Isotype Control Recombinant Antibody (98136-1-RR, Clone: 240953C9) (blue). Cells were fixed with 4% PFA and permeabilized with Flow Cytometry Perm Buffer (PF00011-C).



Biolayer interferometry (BLI) kinetic assays of 83319-1-RR against Human SAT1 were performed. The affinity constant is 0.484 nM.