

For Research Use Only

# NUPR1 Recombinant antibody, PBS Only (Capture)



Catalog Number: 83315-2-PBS

## Basic Information

<b>Catalog Number:</b> 83315-2-PBS	<b>GenBank Accession Number:</b> BC002434	<b>Purification Method:</b> Protein A purification
<b>Size:</b> 100ug , Concentration: 1 mg/ml by Nanodrop;	<b>GeneID (NCBI):</b> 26471	<b>CloneNo.:</b> 240149G4
<b>Source:</b> Rabbit	<b>UNIPROT ID:</b> O60356	
<b>Isotype:</b> IgG	<b>Full Name:</b> nuclear protein 1	
<b>Immunogen Catalog Number:</b> AG7039	<b>Calculated MW:</b> 8 kDa	

## Applications

**Tested Applications:**  
Cytometric bead array, Indirect ELISA, WB

**Species Specificity:**  
human

## Product Information

83315-2-PBS targets NUPR1 as part of a matched antibody pair:

MP00339-2: 83315-2-PBS capture and 83315-4-PBS detection (validated in Cytometric bead array)

MP00339-3: 83315-2-PBS capture and 83315-3-PBS detection (validated in Cytometric bead array)

Unconjugated rabbit recombinant monoclonal antibody in PBS only (BSA and azide free) storage buffer at a concentration of 1 mg/mL, ready for conjugation. Created using Proteintech's proprietary in-house recombinant technology. Recombinant production enables unrivalled batch-to-batch consistency, easy scale-up, and future security of supply.

This conjugation ready format makes antibodies ideal for use in many applications including: ELISAs, multiplex assays requiring matched pairs, mass cytometry, and multiplex imaging applications. Antibody use should be optimized by the end user for each application and assay.

## Storage

**Storage:**  
Store at -80°C.  
**Storage Buffer:**  
PBS Only

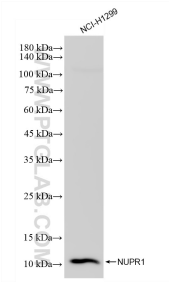
For technical support and original validation data for this product please contact:

T: 1 (888) 4PTGLAB (1-888-478-4522) (toll free in USA), or 1(312) 455-8498 (outside USA)

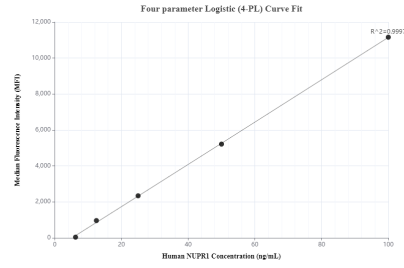
E: [proteintech@ptglab.com](mailto:proteintech@ptglab.com)  
W: [ptglab.com](http://ptglab.com)

**This product is exclusively available under Proteintech Group brand and is not available to purchase from any other manufacturer.**

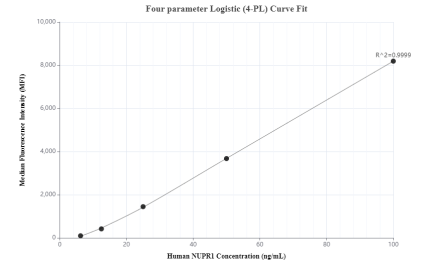
## Selected Validation Data



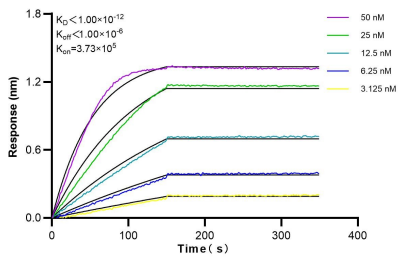
NCI-H1299 cells were subjected to SDS PAGE followed by western blot with 83315-2-RR (NUPR1 antibody) at dilution of 1:1000 incubated at room temperature for 1.5 hours. This data was developed using the same antibody clone with 83315-2-PBS in a different storage buffer formulation.



Cytometric bead array standard curve of MP00339-2, NUPR1 Recombinant Matched Antibody Pair, PBS Only. Capture antibody: 83315-2-PBS. Detection antibody: 83315-4-PBS. Standard: Ag7039. Range: 6.25-100 ng/mL.



Cytometric bead array standard curve of MP00339-3, NUPR1 Recombinant Matched Antibody Pair, PBS Only. Capture antibody: 83315-2-PBS. Detection antibody: 83315-3-PBS. Standard: Ag7039. Range: 6.25-100 ng/mL.



Biolayer interferometry (BLI) kinetic assays of 83315-2-RR against Human NUPR1 were performed. The affinity constant is below 1 pM.