

For Research Use Only

COPS8 Recombinant antibody

Catalog Number:83312-1-RR



Basic Information

Catalog Number: 83312-1-RR	GenBank Accession Number: BC003090	Purification Method: Protein A purification
Size: 100ul , Concentration: 1000 ug/ml by Nanodrop;	GeneID (NCBI): 10920	CloneNo.: 240195B1
Source: Rabbit	UNIPROT ID: Q99627	Recommended Dilutions: WB 1:5000-1:50000 IHC 1:125-1:500 IF/ICC 1:125-1:500
Isotype: IgG	Full Name: COP9 constitutive photomorphogenic homolog subunit 8 (Arabidopsis)	
Immunogen Catalog Number: AG0143	Calculated MW: 23 kDa	
	Observed MW: 23 kDa	

Applications

Tested Applications:
WB, IHC, IF/ICC, ELISA

Species Specificity:
human, mouse, rat

Note-IHC: suggested antigen retrieval with TE buffer pH 9.0; (*) Alternatively, antigen retrieval may be performed with citrate buffer pH 6.0

Positive Controls:

WB : SH-SY5Y cells, HepG2 cells, T-47D cells, NIH/3T3 cells, mouse brain tissue, rat brain tissue

IHC : human intrahepatic cholangiocarcinoma tissue,

IF/ICC : SH-SY5Y cells,

Background Information

COPS8 is one of the eight subunits of COP9 signalosome, a highly conserved protein complex that functions as an important regulator in multiple signaling pathways. The structure and function of COP9 signalosome is similar to that of the 19S regulatory particle of 26S proteasome. COP9 signalosome has been shown to interact with SCF-type E3 ubiquitin ligases and act as a positive regulator of E3 ubiquitin ligases.

Storage

Storage:

Store at -20°C. Stable for one year after shipment.

Storage Buffer:

PBS with 0.02% sodium azide and 50% glycerol pH 7.3.

Aliquoting is unnecessary for -20°C storage

*** 20ul sizes contain 0.1% BSA

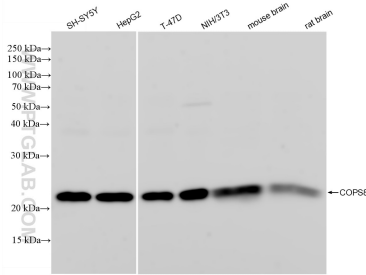
For technical support and original validation data for this product please contact:

T: 1 (888) 4PTGLAB (1-888-478-4522) (toll free in USA), or 1(312) 455-8498 (outside USA)

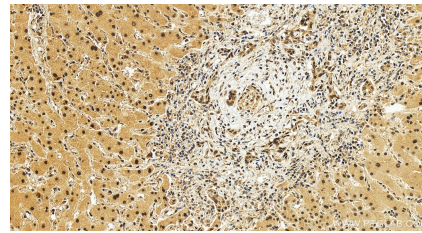
E: proteintech@ptglab.com
W: ptglab.com

This product is exclusively available under Proteintech Group brand and is not available to purchase from any other manufacturer.

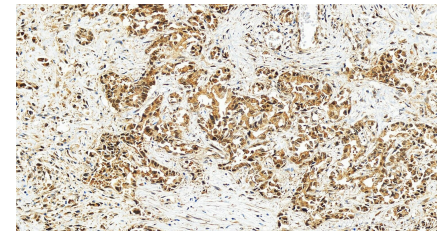
Selected Validation Data



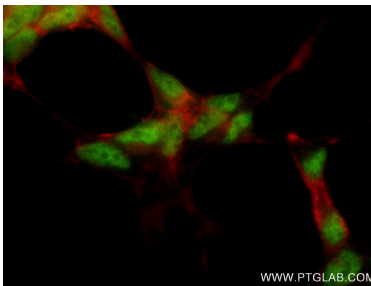
Various lysates were subjected to SDS PAGE followed by western blot with 83312-1-RR (COPS8 antibody) at dilution of 1:10000 incubated at room temperature for 1.5 hours.



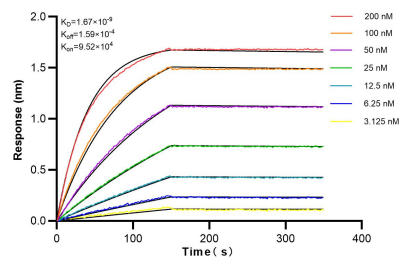
Immunohistochemical analysis of paraffin-embedded human intrahepatic cholangiocarcinoma tissue slide using 83312-1-RR (COPS8 antibody) at dilution of 1:250 (under 20x lens). Heat mediated antigen retrieval with Tris-EDTA buffer (pH 9.0).



Immunohistochemical analysis of paraffin-embedded human intrahepatic cholangiocarcinoma tissue slide using 83312-1-RR (COPS8 antibody) at dilution of 1:250 (under 20x lens). Heat mediated antigen retrieval with Tris-EDTA buffer (pH 9.0).



Immunofluorescent analysis of (4% PFA) fixed SH-SY5Y cells using COPS8 antibody (83312-1-RR, Clone: 240195B1) at dilution of 1:250 and CoraLite®488-Conjugated AffiniPure Goat Anti-Rabbit IgG(H+L) (SA00013-2), CL594-Phalloidin (red).



Biolayer interferometry (BLI) kinetic assays of 83312-1-RR against Human COPS8 were performed. The affinity constant is 1.67 nM.