

For Research Use Only

# MUC1/CA15-3 C-terminal Recombinant antibody, PBS Only (Detector)

Catalog Number:83311-1-PBS



## Basic Information

<b>Catalog Number:</b> 83311-1-PBS	<b>GenBank Accession Number:</b> BC120975	<b>Purification Method:</b> Protein A purification
<b>Size:</b> 100ug, Concentration: 1 mg/ml by Nanodrop;	<b>GeneID (NCBI):</b> 4582	<b>CloneNo.:</b> 240190A2
<b>Source:</b> Rabbit	<b>UNIPROT ID:</b> P15941	
<b>Isotype:</b> IgG	<b>Full Name:</b> mucin 1, cell surface associated	
<b>Immunogen Catalog Number:</b> AG20366	<b>Calculated MW:</b> 1264 aa, 123 kDa	

## Applications

**Tested Applications:**  
Cytometric bead array, Sandwich ELISA, Indirect ELISA, Sample test

**Species Specificity:**  
human

## Product Information

83311-1-PBS targets MUC1/CA15-3 C-terminal as part of a matched antibody pair:

MP00335-1: 83311-3-PBS capture and 83311-1-PBS detection (validated in Cytometric bead array, Sandwich ELISA)

MP00335-2: 83311-2-PBS capture and 83311-1-PBS detection (validated in Cytometric bead array)

Unconjugated rabbit recombinant monoclonal antibody in PBS only (BSA and azide free) storage buffer at a concentration of 1 mg/mL, ready for conjugation. Created using Proteintech's proprietary in-house recombinant technology. Recombinant production enables unrivalled batch-to-batch consistency, easy scale-up, and future security of supply.

This conjugation ready format makes antibodies ideal for use in many applications including: ELISAs, multiplex assays requiring matched pairs, mass cytometry, and multiplex imaging applications. Antibody use should be optimized by the end user for each application and assay.

## Storage

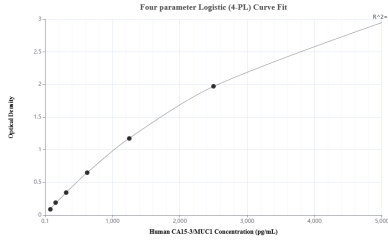
**Storage:**  
Store at -80°C.

**Storage Buffer:**  
PBS Only

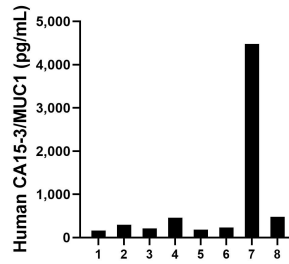
For technical support and original validation data for this product please contact:  
T: 1 (888) 4PTGLAB (1-888-478-4522) (toll free in USA), or 1(312) 455-8498 (outside USA)      E: proteintech@ptglab.com  
W: ptglab.com

**This product is exclusively available under Proteintech Group brand and is not available to purchase from any other manufacturer.**

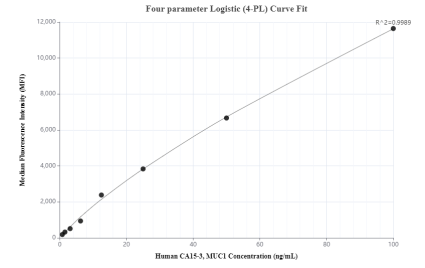
## Selected Validation Data



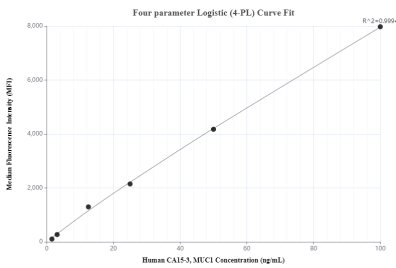
Sandwich ELISA standard curve of MP00335-1, Human MUC1/CA15-3 C-terminal Recombinant Matched Antibody Pair - PBS only. 83311-3-PBS was coated to a plate as the capture antibody and incubated with serial dilutions of standard Ag20366. 83311-1-PBS was HRP conjugated as the detection antibody. Range: 78.1-5000 pg/mL



Serum of eight humans was measured. The human MUC1/CA15-3 C-terminal concentration of detected samples was determined to be 812.7 pg/mL with a range of 159.5 - 4,480.5 pg/mL



Cytometric bead array standard curve of MP00335-1, MUC1/CA15-3 C-terminal Recombinant Matched Antibody Pair, PBS Only. Capture antibody: 83311-3-PBS. Detection antibody: 83311-1-PBS. Standard: Ag20366. Range: 0.78-100 ng/mL



Cytometric bead array standard curve of MP00335-2, MUC1/CA15-3 C-terminal Recombinant Matched Antibody Pair, PBS Only. Capture antibody: 83311-2-PBS. Detection antibody: 83311-1-PBS. Standard: Ag20366. Range: 1.56-100 ng/mL