

For Research Use Only

RELB Recombinant antibody, PBS Only

Catalog Number:83305-6-PBS



Basic Information

Catalog Number:

83305-6-PBS

Size:

100ug , Concentration: 1 mg/ml by Nanodrop;

Source:

Rabbit

Isotype:

IgG

Immunogen Catalog Number:

AG13824

GenBank Accession Number:

BC028013

GeneID (NCBI):

5971

UNIPROT ID:

Q01201

Full Name:

v-rel reticuloendotheliosis viral oncogene homolog B

Calculated MW:

62 kDa

Observed MW:

62-65 kDa

Purification Method:

Protein A purification

CloneNo.:

242336G4

Applications

Tested Applications:

WB, FC (Intra), Indirect ELISA

Species Specificity:

human

Background Information

RELB, also named as Transcription factor RelB, is a 579 amino acid protein, which contains one RHD domain. RELB localizes in the nucleus and cytoplasm. RELB is a pleiotropic transcription factor which is present in almost all cell types and is involved in many biological processes such as inflammation, immunity, differentiation, cell growth, tumorigenesis and apoptosis.

Storage

Storage:

Store at -80°C.

Storage Buffer:

PBS Only

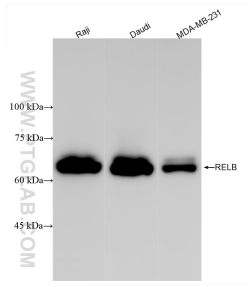
For technical support and original validation data for this product please contact:

T: 1 (888) 4PTGLAB (1-888-478-4522) (toll free in USA), or 1(312) 455-8498 (outside USA)

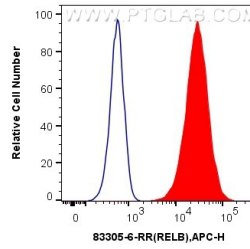
E: proteintech@ptglab.com
W: ptglab.com

This product is exclusively available under Proteintech Group brand and is not available to purchase from any other manufacturer.

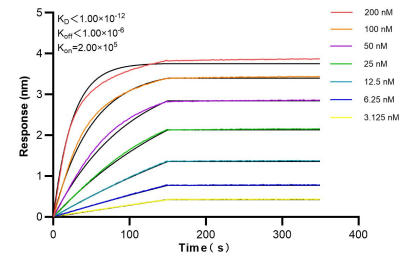
Selected Validation Data



Various lysates were subjected to SDS PAGE followed by western blot with 83305-6-RR (RELB antibody) at dilution of 1:10000 incubated at room temperature for 1.5 hours. This data was developed using the same antibody clone with 83305-6-PBS in a different storage buffer formulation.



1×10^6 Raji cells were intracellularly stained with 0.25 μ g RELB Recombinant antibody (83305-6-RR, Clone:242336G4) and APC-Conjugated Goat Anti-Rabbit IgG(H+L) (red), or 0.25 μ g Rabbit IgG Isotype Control Recombinant Antibody (98136-1-RR, Clone:240953C9) (blue). Cells were fixed with 4% PFA and permeabilized with Flow Cytometry Perm Buffer (PF00011-C). This data was developed using the same antibody clone with 83305-6-PBS in a different storage



Biolayer interferometry (BLI) kinetic assays of 83305-6-RR against Human RELB were performed. The affinity constant is below 1 pM.