

For Research Use Only

# RELB Recombinant antibody, PBS Only (Capture)

Catalog Number:83305-4-PBS



## Basic Information

<b>Catalog Number:</b> 83305-4-PBS	<b>GenBank Accession Number:</b> BC028013	<b>Purification Method:</b> Protein A purification
<b>Size:</b> 100ug , Concentration: 1 mg/ml by Nanodrop;	<b>GeneID (NCBI):</b> 5971	<b>CloneNo.:</b> 242336E11
<b>Source:</b> Rabbit	<b>UNIPROT ID:</b> Q01201	
<b>Isotype:</b> IgG	<b>Full Name:</b> v-rel reticuloendotheliosis viral oncogene homolog B	
<b>Immunogen Catalog Number:</b> AG13824	<b>Calculated MW:</b> 62 kDa	

## Applications

**Tested Applications:**  
Cytometric bead array, Sandwich ELISA, Indirect ELISA, Sample test

**Species Specificity:**  
human

## Product Information

83305-4-PBS targets RELB as part of a matched antibody pair:

MP01583-1: 83305-4-PBS capture and 83305-5-PBS detection (validated in Cytometric bead array, Sandwich ELISA)

Unconjugated rabbit recombinant monoclonal antibody in PBS only (BSA and azide free) storage buffer at a concentration of 1 mg/mL, ready for conjugation. Created using Proteintech's proprietary in-house recombinant technology. Recombinant production enables unrivalled batch-to-batch consistency, easy scale-up, and future security of supply.

This conjugation ready format makes antibodies ideal for use in many applications including: ELISAs, multiplex assays requiring matched pairs, mass cytometry, and multiplex imaging applications. Antibody use should be optimized by the end user for each application and assay.

## Storage

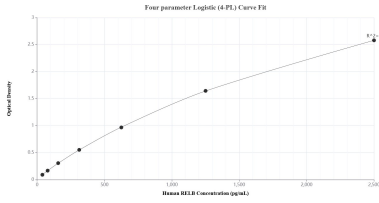
**Storage:**  
Store at -80°C.

**Storage Buffer:**  
PBS Only

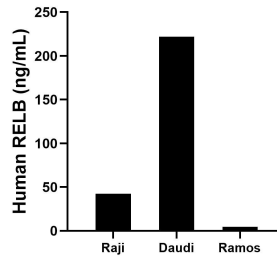
For technical support and original validation data for this product please contact:  
T: 1 (888) 4PTGLAB (1-888-478-4522) (toll free in USA), or 1(312) 455-8498 (outside USA)      E: proteintech@ptglab.com  
W: ptglab.com

**This product is exclusively available under Proteintech Group brand and is not available to purchase from any other manufacturer.**

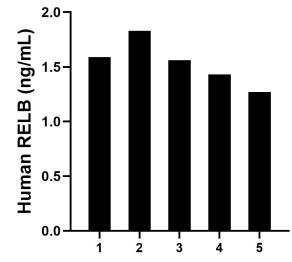
## Selected Validation Data



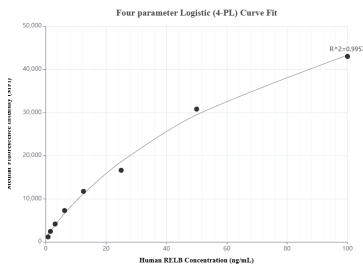
Sandwich ELISA standard curve of MP01583-1, Human RELB Recombinant Matched Antibody Pair - PBS only. 83305-4-PBS was coated to a plate as the capture antibody and incubated with serial dilutions of standard Ag13824. 83305-5-PBS was HRP conjugated as the detection antibody. Range: 39.1-2500 pg/mL.



The mean RELB concentration was determined to be 42.5 ng/mL in Raji cell extract based on a 1.4 mg/mL extract load, 221.9 ng/mL in Daudi cell extract based on a 3.6 mg/mL extract load and 4.5 ng/mL in Ramos cell extract based on a 1.4 mg/mL extract load.



Serum of five individual healthy human donors was measured. The RELB concentration of detected samples was determined to be 1.5 ng/mL with a range of 1.3-1.8 ng/mL.



Cytometric bead array standard curve of MP01583-1, RELB Recombinant Matched Antibody Pair, PBS Only. Capture antibody: 83305-4-PBS. Detection antibody: 83305-5-PBS. Standard: Ag13824. Range: 0.781-100 ng/mL.