

For Research Use Only

# STX1B Recombinant antibody, PBS Only (Detector)



Catalog Number: 83298-4-PBS

## Basic Information

<b>Catalog Number:</b> 83298-4-PBS	<b>GenBank Accession Number:</b> BC062298	<b>Purification Method:</b> Protein A purification
<b>Size:</b> 100ug, Concentration: 1mg/ml by Nanodrop;	<b>GeneID (NCBI):</b> 112755	<b>CloneNo.:</b> 240156F6
<b>Source:</b> Rabbit	<b>UNIPROT ID:</b> P61266	
<b>Isotype:</b> IgG	<b>Full Name:</b> syntaxin 1B	
<b>Immunogen Catalog Number:</b> AG10275	<b>Calculated MW:</b> 288 aa, 33 kDa	

## Applications

**Tested Applications:**  
Cytometric bead array, Sandwich ELISA, Indirect ELISA, Sample test

**Species Specificity:**  
human

## Product Information

83298-4-PBS targets STX1B as part of a matched antibody pair:

MP00312-1: 83298-1-PBS capture and 83298-4-PBS detection (validated in Cytometric bead array, Sandwich ELISA)

MP00312-2: 83298-5-PBS capture and 83298-4-PBS detection (validated in Cytometric bead array)

Unconjugated rabbit recombinant monoclonal antibody in PBS only (BSA and azide free) storage buffer at a concentration of 1 mg/mL, ready for conjugation. Created using Proteintech's proprietary in-house recombinant technology. Recombinant production enables unrivalled batch-to-batch consistency, easy scale-up, and future security of supply.

This conjugation ready format makes antibodies ideal for use in many applications including: ELISAs, multiplex assays requiring matched pairs, mass cytometry, and multiplex imaging applications. Antibody use should be optimized by the end user for each application and assay.

## Storage

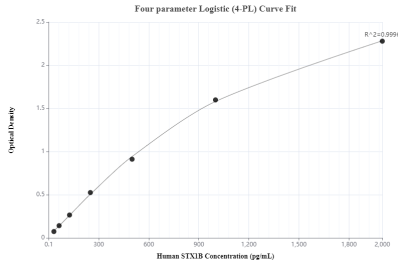
**Storage:**  
Store at -80°C.

**Storage Buffer:**  
PBS Only

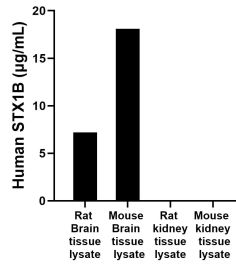
For technical support and original validation data for this product please contact:  
T: 1 (888) 4PTGLAB (1-888-478-4522) (toll free in USA), or 1(312) 455-8498 (outside USA)      E: [proteintech@ptglab.com](mailto:proteintech@ptglab.com)  
W: [ptglab.com](http://ptglab.com)

**This product is exclusively available under Proteintech Group brand and is not available to purchase from any other manufacturer.**

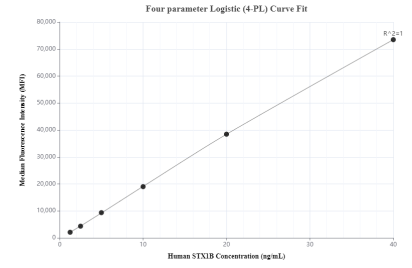
## Selected Validation Data



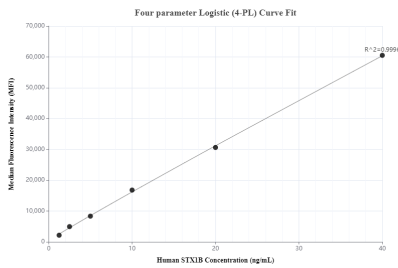
Sandwich ELISA standard curve of MP00312-1, Human STX1B Monoclonal Matched Antibody Pair - PBS only. 83298-1-PBS was coated to a plate as the capture antibody and incubated with serial dilutions of standard Ag10275. 83298-4-PBS was HRP conjugated as the detection antibody. Range: 31.25-2000 pg/mL.



The mean human STX1B concentration was determined to be 7.2 µg/mL in rat Brain tissue lysate based on a 3.0 mg/mL extract load. The mean human STX1B concentration was determined to be 18.1 µg/mL in mouse Brain tissue lysate based on a 2 mg/mL extract load. The mean human STX1B concentration was determined to be 7.0 ng/mL in rat kidney tissue lysate based on a 3 mg/mL extract load. The mean human STX1B concentration was determined to be 15.1 ng/mL in mouse kidney



Cytometric bead array standard curve of MP00312-1, STX1B Recombinant Matched Antibody Pair, PBS Only. Capture antibody: 83298-1-PBS. Detection antibody: 83298-4-PBS. Standard: Ag10275. Range: 1.25-40 ng/mL.



Cytometric bead array standard curve of MP00312-2, STX1B Recombinant Matched Antibody Pair, PBS Only. Capture antibody: 83298-5-PBS. Detection antibody: 83298-4-PBS. Standard: Ag10275. Range: 1.25-40 ng/mL.