

For Research Use Only

# CD14 Recombinant antibody

Catalog Number: 83297-8-RR



## Basic Information

<b>Catalog Number:</b> 83297-8-RR	<b>GenBank Accession Number:</b> NM_009841.4	<b>Purification Method:</b> Protein A purification
<b>Size:</b> 100ul , Concentration: 1000 µg/ml by Nanodrop;	<b>GeneID (NCBI):</b> 12475	<b>CloneNo.:</b> 240225C2
<b>Source:</b> Rabbit	<b>UNIPROT ID:</b> P10810	<b>Recommended Dilutions:</b> WB 1:5000-1:50000 IF/ICC 1:125-1:500
<b>Isotype:</b> IgG	<b>Full Name:</b> CD14 antigen	
	<b>Calculated MW:</b> 39 kDa	
	<b>Observed MW:</b> 45-55 kDa	

## Applications

<b>Tested Applications:</b> WB, IF/ICC, ELISA	<b>Positive Controls:</b> WB : RAW 264.7 cells, IF/ICC : RAW 264.7 cells,
<b>Species Specificity:</b> mouse	

## Background Information

CD14 is a 50-55 kDa glycosylphosphatidylinositol-anchored glycoprotein preferentially expressed on monocytes and macrophages, and at lower levels on granulocytes (PMID: 3385210; 2462937; 7685797). CD14 can also exist as a soluble protein. CD14 acts as a co-receptor for bacterial liposaccharides (LPS) (PMID: 1698311). It plays a major role in the inflammatory response of monocytes to LPS.

## Storage

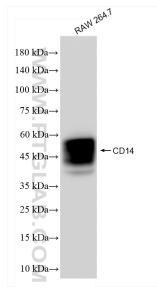
**Storage:**  
Store at -20°C. Stable for one year after shipment.  
**Storage Buffer:**  
PBS with 0.02% sodium azide and 50% glycerol pH 7.3.  
Aliquoting is unnecessary for -20°C storage

\*\*\* 20ul sizes contain 0.1% BSA

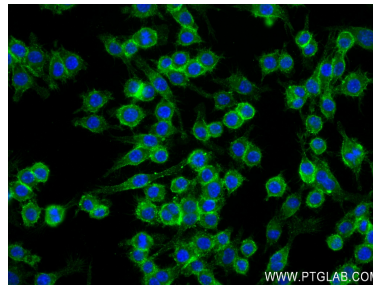
For technical support and original validation data for this product please contact:  
T: 1 (888) 4PTGLAB (1-888-478-4522) (toll free in USA), or 1(312) 455-8498 (outside USA)  
E: proteintech@ptglab.com  
W: ptglab.com

This product is exclusively available under Proteintech Group brand and is not available to purchase from any other manufacturer.

## Selected Validation Data



RAW 264.7 cells were subjected to SDS PAGE followed by western blot with 83297-8-RR (CD14 antibody) at dilution of 1:10000 incubated at room temperature for 1.5 hours.



Immunofluorescent analysis of (4% PFA) fixed RAW 264.7 cells using CD14 antibody (83297-8-RR, Clone: 240225C2 ) at dilution of 1:250 and CoraLite®488-Conjugated AffiniPure Goat Anti-Rabbit IgG(H+L) (SA00013-2).